

Nur für Forschungszwecke

# PINX1 Polyklonaler Antikörper

Katalog-Nr.:12368-1-AP

Vorgestelltes Produkt

9 Publikationen



## Allgemeine Informationen

<b>Katalog-Nr.:</b> 12368-1-AP	<b>GenBank-Zugangsnummer:</b> BC015479	<b>Reinigungsmethode:</b> Antigen-Affinitätsreinigung
<b>Größe:</b> 150ul, Konzentration: 540 µg/ml von Nanodrop;	<b>GeneID (NCBI):</b> 54984	<b>Empfohlene Verdünnungen:</b> WB 1:2000-1:12000 IF 1:50-1:500
<b>Wirt:</b> Kaninchen	<b>Vollständiger Name:</b> PIN2-interacting protein 1	
<b>Isotyp:</b> IgG	<b>Berechnete Masse:</b> 328 aa, 37 kDa	
<b>Immunogen Katalognummer:</b> AG3043	<b>Beobachtete Masse:</b> 40 kDa	

## Anwendungen

<b>Geprüfte Anwendungen:</b> IF, WB, ELISA	<b>Positivkontrollen:</b> WB: Jurkat-Zellen, A431-Zellen, C6-Zellen, HeLa-Zellen, NIH/3T3-Zellen IF: HeLa-Zellen,
<b>In Publikationen genannte Anwendungen:</b> IHC, WB	
<b>Getestete Reaktivität:</b> Human, Maus, Ratte	
<b>Zitierte Arten:</b> Human	

## Hintergrundinformationen

PINX1, also named as LPTL, LPTS and Protein 67-11-3, is a Liver-related putative tumor suppressor. It belongs to the PINX1 family. PINX1 is a microtubule-binding protein essential for faithful chromosome segregation. It mediates TRF1 and TERT accumulation in nucleolus and enhances TRF1 binding to telomeres. PINX1 inhibits telomerase activity. It may inhibit cell proliferation and act as tumor suppressor. PINX1 has been identified as a critical telomerase inhibitor and proposed to be a putative tumor suppressor gene. Loss of PinX1 has been found in a large variety of malignancies, but the expression status in epithelial ovarian tumors has not been investigated.

## Bemerkenswerte Veröffentlichungen

Verfasser	Pubmed ID	Journal	Anwendung
JiHoon Kang	34873474	Am J Cancer Res	WB, IHC
Xiao-Peng Tian	25045845	Cancer Lett	WB, IHC
JiHoon Kang	30026037	Hum Pathol	IHC

## Lagerung

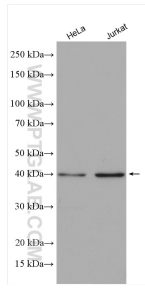
**Lagerungsbedingungen:**  
Bei -20°C lagern. Nach dem Versand ein Jahr lang stabil  
**Lagerungspuffer:**  
PBS mit 0.02% Natriumazid und 50% Glycerin pH 7.3.  
Aliquotieren ist nicht notwendig bei -20°C Lagerung

\*\*\* 20ul-Größen enthalten 0.1% BSA

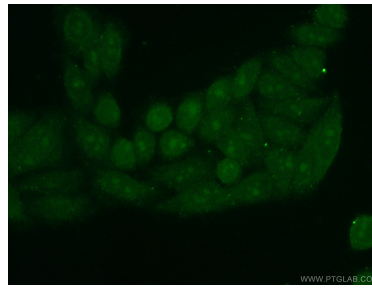
For technical support and original validation data for this product please contact:  
T: 1 (888) 4PTGLAB (1-888-478-4522) (toll free in USA), or 1(312) 455-8498 (outside USA)  
E: proteintech@ptglab.com  
W: ptglab.com

This product is exclusively available under Proteintech Group brand and is not available to purchase from any other manufacturer.

## Ausgewählte Validierungsdaten



Various lysates were subjected to SDS PAGE followed by western blot with 12368-1-AP (PINX1 antibody) at dilution of 1:6000 incubated at room temperature for 1.5 hours.



Immunofluorescent analysis of (10% Formaldehyde) fixed HeLa cells using 12368-1-AP (PINX1 antibody) at dilution of 1:50 and Alexa Fluor 488-conjugated AffiniPure Goat Anti-Rabbit IgG(H+L).