

Nur für Forschungszwecke

# 14-3-3 GAMMA-Specific Polyklonaler Antikörper



Katalog-Nr.:12381-1-AP

Vorgestelltes Produkt

5 Publikationen

## Allgemeine Informationen

Katalog-Nr.:  
12381-1-AP

Größe:  
150ul , Konzentration: 600 µg/ml von  
Nanodrop;

Wirt:  
Kaninchen

Isotyp:  
IgG

Immunogen Katalognummer:  
AG3047

GenBank-Zugangsnummer:  
BC020963

GeneID (NCBI):  
7532

Vollständiger Name:  
tyrosine 3-  
monooxygenase/tryptophan 5-  
monooxygenase activation protein,  
gamma polypeptide

Berechnete Masse:  
247 aa, 28 kDa

Beobachtete Masse:  
28-33 kDa

Reinigungsmethode:

Antigen-Affinitätsreinigung

Empfohlene Verdünnungen:

WB 1:500-1:1000  
IP 0.5-4.0 ug für IP und 1:500-1:1000  
für WB  
IHC 1:50-1:500  
IF 1:10-1:100

## Anwendungen

Geprüfte Anwendungen:

IF, IHC, IP, WB, ELISA

In Publikationen genannte Anwendungen:

CoIP, IP, WB

Getestete Reaktivität:

Human, Hund, Maus, Ratte

Zitierte Arten:

Human

**Hinweis-IHC: Antigenmaskierung mit TE-Puffer pH 9,0 empfohlen. (\*) Wahlweise kann die Antigenmaskierung auch mit Citratpuffer pH 6,0 erfolgen.**

Positivkontrollen:

WB : Maus-IMCD3-Zellen (RNAi), A431-Zellen, K-562-Zellen, NIH/3T3-Zellen

IP : Maushirngewebe,

IHC : humanes Lungenkarzinomgewebe, humanes Mammakarzinomgewebe

IF : MDCK-Zellen,

## Hintergrundinformationen

14-3-3 gamma (also known as YWHAG) is a member of 14-3-3 proteins which were the first phosphoserine/phosphothreonine-binding proteins to be discovered. 14-3-3 family members interact with a wide spectrum of proteins and possess diverse functions. Mammals express seven distinct 14-3-3 isoforms (gamma, epsilon, beta, zeta, sigma, theta, tau) that form multiple homo- and hetero-dimers. 14-3-3 proteins display the highest expression levels in the brain, and have been implicated in several neurodegenerative diseases, including Alzheimer's disease and amyotrophic lateral sclerosis. This antibody specifically recognizes gamma isoform of 14-3-3.

## Bemerkenswerte Veröffentlichungen

Verfasser	Pubmed ID	Journal	Anwendung
Maria A Ahonen	33075494	Biochim Biophys Acta Mol Cell Biol Lipids	WB
Wenjun Wang	33473107	Nat Commun	CoIP, WB
Songlin Zeng	25604190	Proteomics	WB

## Lagerung

Lagerungsbedingungen:

Bei -20°C lagern. Nach dem Versand ein Jahr lang stabil

Lagerungspuffer:

PBS mit 0.02% Natriumazid und 50% Glycerin pH 7.3.

Aliquotieren ist nicht notwendig bei -20°C Lagerung

\*\*\* 20ul-Größen enthalten 0.1% BSA

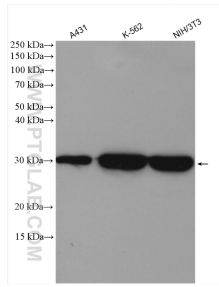
For technical support and original validation data for this product please contact:

T: 1 (888) 4PTGLAB (1-888-478-4522) (toll free in USA), or 1(312) 455-8498 (outside USA)

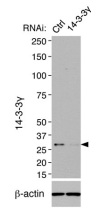
E: proteintech@ptglab.com  
W: ptglab.com

This product is exclusively available under Proteintech Group brand and is not available to purchase from any other manufacturer.

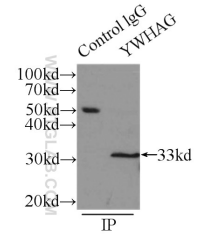
## Ausgewählte Validierungsdaten



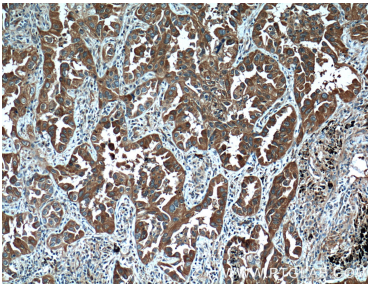
Various lysates were subjected to SDS PAGE followed by western blot with 12381-1-AP (14-3-3 GAMMA-Specific antibody) at dilution of 1:1000 incubated at room temperature for 1.5 hours.



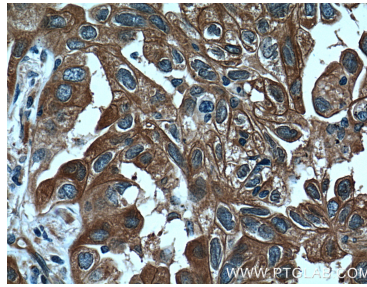
siRNA result of 12381-1-AP (anti-14-3-3G) in Mouse IMCD3 cells From Dr.Seongjin Seo.



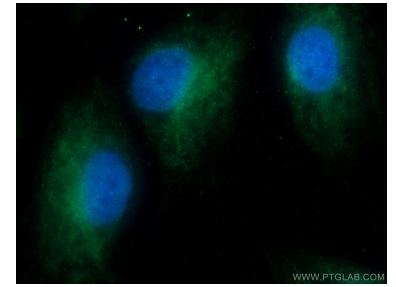
IP Result of anti-14-3-3 GAMMA-Specific (IP:12381-1-AP, 3ug; Detection:12381-1-AP 1:800) with mouse brain tissue lysate 8000ug.



Immunohistochemical analysis of paraffin-embedded human lung cancer tissue slide using 12381-1-AP (14-3-3 GAMMA-Specific antibody) at dilution of 1:200 (under 10x lens). Heat mediated antigen retrieval with Tris-EDTA buffer (pH 9.0).



Immunohistochemical analysis of paraffin-embedded human lung cancer tissue slide using 12381-1-AP (14-3-3 GAMMA-Specific antibody) at dilution of 1:200 (under 40x lens). Heat mediated antigen retrieval with Tris-EDTA buffer (pH 9.0).



Immunofluorescent analysis of MDCK cells using 12381-1-AP (14-3-3 GAMMA-Specific antibody) at dilution of 1:25 and Alexa Fluor 488-conjugated AffiniPure Goat Anti-Rabbit IgG(H+L).