

Nur für Forschungszwecke

APPBP2 Polyklonaler Antikörper

Katalog-Nr.:12409-1-AP



Allgemeine Informationen

Katalog-Nr.: 12409-1-AP	GenBank-Zugangsnummer: BC018121	Reinigungsmethode: Antigen-Affinitätsreinigung
Größe: 150ul , Konzentration: 300 µg/ml von Nanodrop;	GeneID (NCBI): 10513	Empfohlene Verdünnungen: WB 1:1000-1:6000 IHC 1:50-1:500
Wirt: Kaninchen	Vollständiger Name: amyloid beta precursor protein (cytoplasmic tail) binding protein 2	
Isotyp: IgG	Berechnete Masse: 585 aa, 67 kDa	
Immunogen Katalognummer: AG3092	Beobachtete Masse: 67 kDa	

Anwendungen

Geprüfte Anwendungen: IHC, WB, ELISA	Positivkontrollen: WB : A2780-Zellen, HeLa-Zellen, Jurkat-Zellen
Getestete Reaktivität: Human	IHC : humanes Mammakarzinomgewebe,

Hinweis-IHC: Antigendemaskierung mit TE-Puffer pH 9,0 empfohlen. (*) Wahlweise kann die Antigendemaskierung auch mit Citratpuffer pH 6,0 erfolgen.

Hintergrundinformationen

Amyloid proteinbinding protein 2 (APPBP2) is a hydrophilic tubulin that interacts with microtubules and is functionally involved in beta-amyloid precursor protein (APP) transport and/or processing. Based on the regulation of microtubules and APP, APPBP2 is found to be involved in the oncogenesis of various types of cancers, such as breast cancer, ovarian clear cell adenocarcinomas, desmoplastic medulloblastomas and neuroblastomas. Recently, Studies have demonstrated that APPBP2 is a potential target for diagnosis and therapeutic intervention in non-small cell lung cancer (NSCLC) (PMID: 31105033).

Lagerung

Lagerungsbedingungen:
Bei -20°C lagern. Nach dem Versand ein Jahr lang stabil
Lagerungspuffer:
PBS mit 0.02% Natriumazid und 50% Glycerin pH 7.3.
Aliquotieren ist nicht notwendig bei -20°C Lagerung

***** 20ul-Größen enthalten 0.1% BSA**

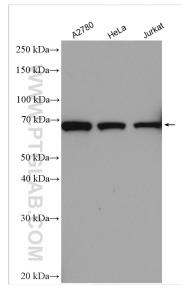
For technical support and original validation data for this product please contact:

T: 1 (888) 4PTGLAB (1-888-478-4522) (toll free
in USA), or 1(312) 455-8498 (outside USA)

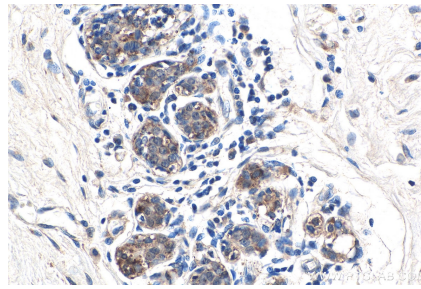
E: proteintech@ptglab.com
W: ptglab.com

This product is exclusively available under Proteintech Group brand and is not available to purchase from any other manufacturer.

Ausgewählte Validierungsdaten



Various lysates were subjected to SDS PAGE followed by western blot with 12409-1-AP (APPBP2 antibody) at dilution of 1:3000 incubated at room temperature for 1.5 hours.



Immunohistochemical analysis of paraffin-embedded human breast cancer tissue slide using 12409-1-AP (APPBP2 antibody) at dilution of 1:200 (under 40x Lens). Heat mediated antigen retrieval with Tris-EDTA buffer (pH 9.0). Chromogenic substrates are DAB/H₂O₂ and CuSO₄.