

Nur für Forschungszwecke

HOMER1 Polyklonaler Antikörper

Katalog-Nr.:12433-1-AP

Vorgestelltes Produkt

14 Publikationen



Allgemeine Informationen

Katalog-Nr.:
12433-1-AP

Größe:
150ul, Konzentration: 800 µg/ml von
Nanodrop und 460 µg/ml durch die
Bradford-Methode mit BSA als
Standard;

Wirt:
Kaninchen

Isotyp:
IgG

Immunogen Katalognummer:
AG3109

GenBank-Zugangsnummer:
BC015502

GeneID (NCBI):
9456

Vollständiger Name:
homer homolog 1 (Drosophila)

Berechnete Masse:
40 kDa

Beobachtete Masse:
46-48 kDa

Reinigungsmethode:

Antigen-Affinitätsreinigung

Empfohlene Verdünnungen:

WB 1:1000-1:5000
IP 0.5-4.0 µg für IP und 1:500-1:2000
für WB
IHC 1:50-1:500
IF 1:50-1:500

Anwendungen

Geprüfte Anwendungen:

FC, IF, IHC, IP, WB, ELISA

In Publikationen genannte Anwendungen:

IF, IHC, WB

Getestete Reaktivität:

Human, Maus, Ratte

Zitierte Arten:

Maus, Ratte

**Hinweis-IHC: Antigendemaskierung mit TE-
Puffer pH 9,0 empfohlen. (*) Wahlweise
kann die Antigendemaskierung auch mit
Citratpuffer pH 6,0 erfolgen.**

Positivkontrollen:

WB : Rattenhirngewebe, humanes Hirngewebe

IP : fetales humanes Hirngewebe,

IHC : humanes Gliomgewebe, humanes
Pankreasgewebe, Maushirngewebe, Rattenhirngewebe

IF : SH-SY5Y-Zellen, MCF-7-Zellen, Rattenhirngewebe

Hintergrundinformationen

Human HOMER1, also named as SYN47, belongs to the Homer family. Human HOMER1 has some isoforms: HOMER1a, HOMER1b, HOMER1c, HOMER1e and HOMER1h. Mouse Homer1 also named as Vesl-1 and it has some isoforms: Vesl-1l, Vesl-1m, Vesl-1s, Homer1b, and Homer1d. HOMER1 is a postsynaptic density scaffolding protein. It is a neuronal immediate-early gene (IEG) that is enriched at excitatory synapses and binds mGluRs. In WB, the MW of HOMER1 is about 46-50kd, 40-43kd and 20-26kd.

Bemerkenswerte Veröffentlichungen

Verfasser	Pubmed ID	Journal	Anwendung
Qianli Zhang	36313806	Cell Rep Methods	IF
Lisa Y So	33031871	Behav Brain Res	WB
Chuyu Chen	33006315	Elife	WB

Lagerung

Lagerungsbedingungen:

Bei -20°C lagern. Nach dem Versand ein Jahr lang stabil

Lagerungspuffer:

PBS mit 0.02% Natriumazid und 50% Glycerin pH 7.3.

Aliquotieren ist nicht notwendig bei -20°C Lagerung

*** 20ul-Größen enthalten 0.1% BSA

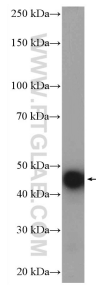
For technical support and original validation data for this product please contact:

T: 1 (888) 4PTGLAB (1-888-478-4522) (toll free
in USA), or 1(312) 455-8498 (outside USA)

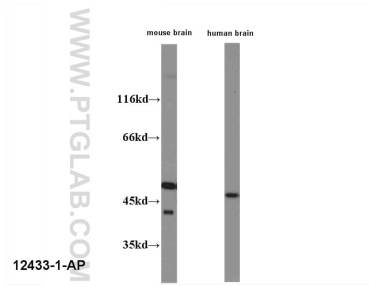
E: proteintech@ptglab.com
W: ptglab.com

This product is exclusively available under Proteintech Group brand and is not available to purchase from any other manufacturer.

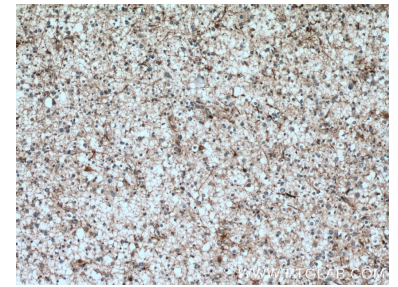
Ausgewählte Validierungsdaten



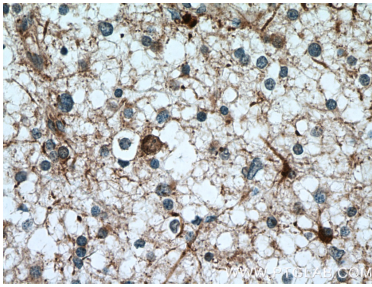
rat brain tissue were subjected to SDS PAGE followed by western blot with 12433-1-AP (HOMER1 antibody) at dilution of 1:5000 incubated at room temperature for 1 hour.



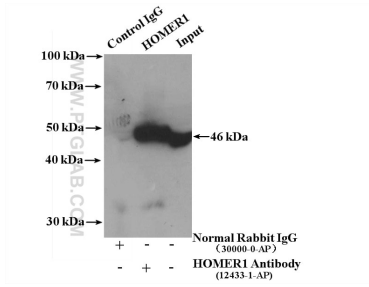
WB result of anti-HOMER1 (12433-1-ap) with mouse brain lysate and human brain lysate.



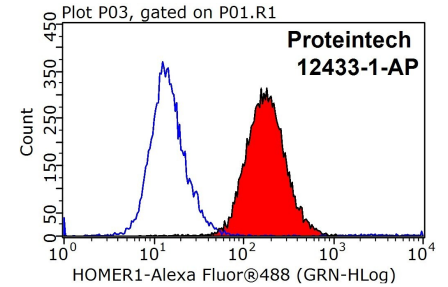
Immunohistochemical analysis of paraffin-embedded human gliomas tissue slide using 12433-1-AP (HOMER1 antibody) at dilution of 1:200 (under 10x lens. Heat mediated antigen retrieval with Tris-EDTA buffer (pH 9.0).



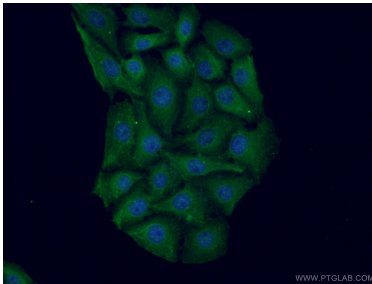
Immunohistochemical analysis of paraffin-embedded human gliomas tissue slide using 12433-1-AP (HOMER1 antibody) at dilution of 1:200 (under 40x lens. Heat mediated antigen retrieval with Tris-EDTA buffer (pH 9.0).



IP result of anti-HOMER1 (IP:12433-1-AP, 4ug; Detection:12433-1-AP 1:1000) with fetal human brain tissue lysate 4000 ug.



1X10⁶ HeLa cells were stained with 0.2ug HOMER1 antibody (12433-1-AP, red) and control antibody (blue). Fixed with 90% MeOH blocked with 3% BSA (30 min). Alexa Fluor 488-conjugated AffiniPure Goat Anti-Rabbit IgG(H+L) with dilution 1:1000.



Immunofluorescent analysis of (-20°C Ethanol) fixed SH-SY5Y cells using 12433-1-AP (HOMER1 antibody) at dilution of 1:50 and Alexa Fluor 488-Conjugated AffiniPure Goat Anti-Rabbit IgG(H+L).