

Allgemeine Informationen

Katalog-Nr.: 12439-1-AP	GenBank-Zugangsnummer: BC034494	Reinigungsmethode: Antigen-Affinitätsreinigung
Größe: 150ul , Konzentration: 600 µg/ml von Nanodrop;	GeneID (NCBI): 26039	Empfohlene Verdünnungen: WB 1:500-1:3000 IP 0.5-4.0 ug für IP und 1:150-1:600 für WB
Wirt: Kaninchen	Vollständiger Name: synovial sarcoma translocation gene on chromosome 18-like 1	IHC 1:20-1:200 IF 1:50-1:500
Isotyp: IgG	Berechnete Masse: 396 aa, 43 kDa	
Immunogen Katalognummer: AG3119	Beobachtete Masse: 55 kDa	

Anwendungen

Geprüfte Anwendungen:

IF, IHC, IP, WB, ELISA

In Publikationen genannte Anwendungen:

ChIP, CoIP, IF, IHC, WB

Getestete Reaktivität:

Human, Maus, Ratte

Zitierte Arten:

Drosophila, Human, Maus, Ratte

Positivkontrollen:

WB : K-562-Zellen, COLO 320-Zellen, HeLa-Zellen, humanes Herzgewebe, Maushirngewebe

IP : HeLa-Zellen, Maushirngewebe

IHC : humanes Mammakarzinomgewebe, humanes Hirngewebe

IF : HeLa-Zellen, Maushodengewebe

Hinweis-IHC: Antigendemaskierung mit TE-Puffer pH 9,0 empfohlen. (*) Wahlweise kann die Antigendemaskierung auch mit Citratpuffer pH 6,0 erfolgen.

Hintergrundinformationen

CREST, also named as SS18-like 1(SS18L1) is a transcriptional activator that is required for calcium-dependent dendritic growth and branching in cortical neurons. It's also a nuclear protein interacts with CREB-binding protein and expressed in the developing brain. It helps regulate neuronal morphogenesis in calcium-dependent manner. The N-terminal domain of SS18L1 is required for suppressing transactivation in the basal state, while the C-terminal domain is required for calcium-induced transactivation. It's part of the CREST-BRG1 complex, a multiprotein complex that regulates promoter activation by orchestrating a calcium-dependent release of a repressor complex and a recruitment of an activator complex. This complex also binds to the NR2B promoter, and activity-dependent induction of NR2B expression involves a release of HDAC1 and recruitment of CREBBP. The calculated molecular weight of CREST is about 43 kDa, but the modified of CREST protein is 55 kDa (PMID: 25888396). CREST exists some isoforms with calculated MV 43, 40, 33 and 29 kDa.

Bemerkenswerte Veröffentlichungen

Verfasser	Pubmed ID	Journal	Anwendung
Yasaman Alaghand	30228227	J Neurosci	WB,IF
Colin Kenny	34071089	Cancers (Basel)	ChIP
Stahl Brett T BT	23785148	J Neurosci	IF

Lagerung

Lagerungsbedingungen:

Bei -20°C lagern. Nach dem Versand ein Jahr lang stabil

Lagerungspuffer:

PBS mit 0.02% Natriumazid und 50% Glycerin pH 7.3.

Aliquotieren ist nicht notwendig bei -20°C Lagerung

***** 20ul-Größen enthalten 0.1% BSA**

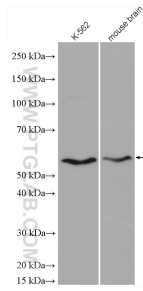
For technical support and original validation data for this product please contact:

T: 1 (888) 4PTGLAB (1-888-478-4522) (toll free in USA), or 1(312) 455-8498 (outside USA)

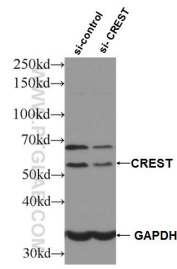
E: proteintech@ptglab.com
 W: ptglab.com

This product is exclusively available under Proteintech Group brand and is not available to purchase from any other manufacturer.

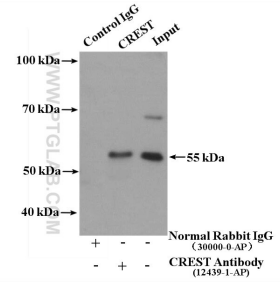
Ausgewählte Validierungsdaten



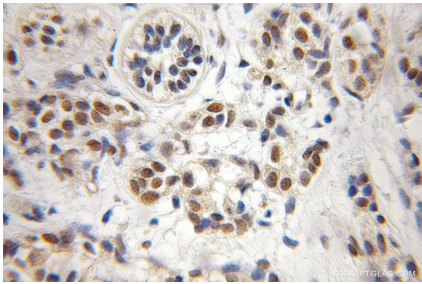
Various lysates were subjected to SDS PAGE followed by western blot with 12439-1-AP (CREST antibody) at dilution of 1:1500 incubated at room temperature for 1.5 hours.



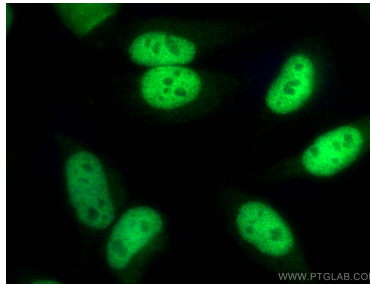
WB result of CREST antibody (12439-1-AP; 1:4000; incubated at room temperature for 1.5 hours) with sh-Control and sh-CREST transfected HeLa cells.



IP result of anti-CREST (IP:12439-1-AP, 4ug; Detection:12439-1-AP 1:300) with HeLa cells lysate 3000 ug.



Immunohistochemical analysis of paraffin-embedded human breast cancer using 12439-1-AP (CREST antibody) at dilution of 1:50 (under 10x lens).



Immunofluorescent analysis of (4% PFA) fixed HeLa cells using CREST antibody (12439-1-AP) at dilution of 1:200 and CoraLite®488-Conjugated AffiniPure Goat Anti-Rabbit IgG(H+L).