

Nur für Forschungszwecke

EPS8 Polyklonaler Antikörper

Katalog-Nr.:12455-1-AP

Vorgestelltes Produkt

2 Publikationen



Allgemeine Informationen

Katalog-Nr.:
12455-1-AP

Größe:
150ul, Konzentration: 800 µg/ml von
Nanodrop und 487 µg/ml durch die
Bradford-Methode mit BSA als
Standard;

Wirt:
Kaninchen

Isotyp:
IgG

Immunogen Katalognummer:
AG3121

GenBank-Zugangsnummer:
BC030010

GeneID (NCBI):
2059

Vollständiger Name:
epidermal growth factor receptor
pathway substrate 8

Berechnete Masse:
822 aa, 92 kDa

Beobachtete Masse:
97 kDa

Reinigungsmethode:

Antigen-Affinitätsreinigung

Empfohlene Verdünnungen:

WB 1:500-1:2000
IP 0.5-4.0 µg für IP und 1:500-1:1000
für WB
IHC 1:50-1:500
IF 1:10-1:100

Anwendungen

Geprüfte Anwendungen:

IF, IHC, IP, WB, ELISA

In Publikationen genannte Anwendungen:

IHC, WB

Getestete Reaktivität:

Human

Zitierte Arten:

Human

Hinweis-IHC: Antigendemaskierung mit TE-Puffer pH 9,0 empfohlen. (*) Wahlweise kann die Antigendemaskierung auch mit Citratpuffer pH 6,0 erfolgen.

Positivkontrollen:

WB: HEK-293T-Zellen, HeLa-Zellen

IP: HeLa-Zellen,

IHC: humanes Mammakarzinomgewebe,

IF: A375-Zellen,

Hintergrundinformationen

Epidermal growth factor receptor Pathway Substrate 8 (EPS8) is a crucial regulator of the actin cytoskeleton dynamics accompanying cell motility and invasion. This protein contains one PH domain and one SH3 domain leading to its binding activity with multiple cellular targets. EPS8 can function as a unique actin capping protein specifically required for dendritic cell migration and plays roles in the regulation of axonal filopodia in neuronal development and synapse formation. The EPS8 gene may contribute to the development of a subset of colorectal cancers and could have applications in diagnosis and treatment.

Bemerkenswerte Veröffentlichungen

Verfasser	Pubmed ID	Journal	Anwendung
Mingzhu Tan	34391775	Exp Cell Res	IHC, WB
Jieyun Zhang	32147678	Acta Biochim Biophys Sin (Shanghai)	WB

Lagerung

Lagerungsbedingungen:

Bei -20°C lagern. Nach dem Versand ein Jahr lang stabil

Lagerungspuffer:

PBS mit 0.02% Natriumazid und 50% Glycerin pH 7.3.

Aliquotieren ist nicht notwendig bei -20°C Lagerung

*** 20ul-Größen enthalten 0.1% BSA

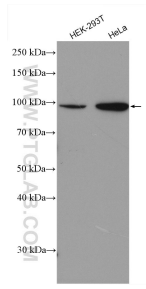
For technical support and original validation data for this product please contact:

T: 1 (888) 4PTGLAB (1-888-478-4522) (toll free
in USA), or 1(312) 455-8498 (outside USA)

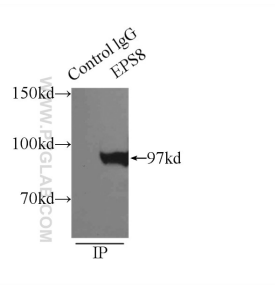
E: proteintech@ptglab.com
W: ptglab.com

This product is exclusively available under Proteintech Group brand and is not available to purchase from any other manufacturer.

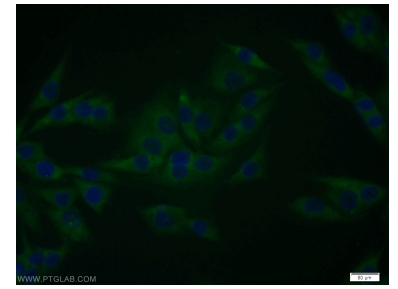
Ausgewählte Validierungsdaten



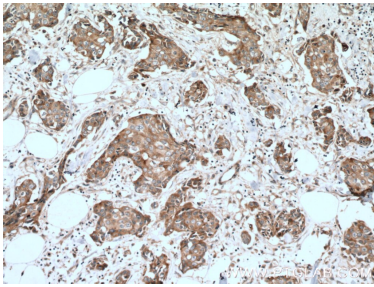
Various lysates were subjected to SDS PAGE followed by western blot with 12455-1-AP (EPS8 antibody) at dilution of 1:1000 incubated at room temperature for 1.5 hours.



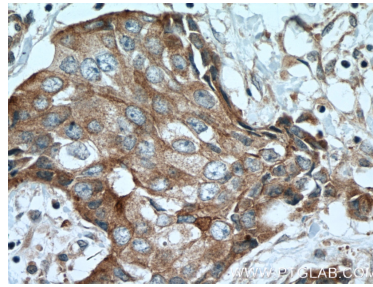
IP Result of anti-EPS8 (IP:12455-1-AP, 3ug; Detection:12455-1-AP 1:500) with HeLa cells lysate 3800ug.



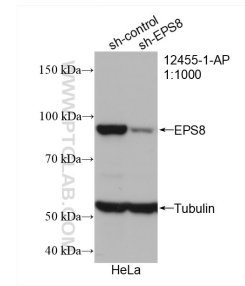
Immunofluorescent analysis of A375 cells using 12455-1-AP (EPS8 antibody) at dilution of 1:25 and Alexa Fluor 488-conjugated AffiniPure Goat Anti-Rabbit IgG(H+L).



Immunohistochemical analysis of paraffin-embedded human breast cancer tissue slide using 12455-1-AP (EPS8 antibody) at dilution of 1:100 (under 10x lens. Heat mediated antigen retrieval with Tris-EDTA buffer (pH 9.0).



Immunohistochemical analysis of paraffin-embedded human breast cancer tissue slide using 12455-1-AP (EPS8 antibody) at dilution of 1:100 (under 40x lens. Heat mediated antigen retrieval with Tris-EDTA buffer (pH 9.0).



WB result of EPS8 antibody (12455-1-AP; 1:1000; incubated at room temperature for 1.5 hours) with sh-Control and sh-EPS8 transfected HeLa cells.