

## Allgemeine Informationen

<b>Katalog-Nr.:</b> 12525-1-AP	<b>GenBank-Zugangsnummer:</b> BC015803	<b>Reinigungsmethode:</b> Antigen-Affinitätsreinigung
<b>Größe:</b> 150ul, Konzentration: 350 µg/ml von 3660 Nanodrop und 220 µg/ml durch die Bradford-Methode mit BSA als Standard;	<b>GeneID (NCBI):</b> 3660	<b>Empfohlene Verdünnungen:</b> WB 1:1000-1:4000 IP 0.5-4.0 ug für IP und 1:500-1:1000 für WB
<b>Wirt:</b> Kaninchen	<b>Vollständiger Name:</b> IRF 2	<b>IHC 1:20-1:200</b> <b>IF 1:200-1:800</b>
<b>Isotyp:</b> IgG	<b>Berechnete Masse:</b> 349 aa, 39 kDa	
<b>Immunogen Katalognummer:</b> AG3220	<b>Beobachtete Masse:</b> 50 kDa	

## Anwendungen

<b>Geprüfte Anwendungen:</b> IF, IHC, IP, WB, ELISA	<b>Positivkontrollen:</b> <b>WB:</b> HeLa-Zellen, COLO 320-Zellen, Jurkat-Zellen, Maus-Kolongewebe <b>IP:</b> Jurkat-Zellen, <b>IHC:</b> humanes Kolonkarzinomgewebe, <b>IF:</b> Jurkat-Zellen,
<b>In Publikationen genannte Anwendungen:</b> IHC, WB	
<b>Getestete Reaktivität:</b> Human, Maus, Ratte	
<b>Zitierte Arten:</b> Huhn, Human, Maus	
<b>Hinweis-IHC: Antigendemaskierung mit TE-Puffer pH 9,0 empfohlen. (*) Wahlweise kann die Antigendemaskierung auch mit Citratpuffer pH 6,0 erfolgen.</b>	

## Hintergrundinformationen

IRF2, also known as IFN regulatory factor 2, which belongs to the IRF family. IRF2 specifically binds to the upstream regulatory region of type I IFN and IFN-inducible MHC class I genes (the IFN consensus sequence (ICS)) and represses those genes. IRF2 also acts as an activator for several genes including H4 and IL7. IRF2 constitutively binds to the ISRE promoter to activate IL7. IRF2 is involved in cell cycle regulation through binding the site II (HiNF-M) promoter region of H4 and activating transcription during cell growth. The calculated molecular weight of IRF2 is 39 kDa, but post-modification of IRF2 is about 50 kDa (PMID: 17698501).

## Bemerkenswerte Veröffentlichungen

Verfasser	Pubmed ID	Journal	Anwendung
Shiao Tong	36156371	Transl Oncol	WB
Xiangzhi Li	31138473	J Dermatol Sci	WB,IHC
Hongyan Sun	35806321	Int J Mol Sci	WB

## Lagerung

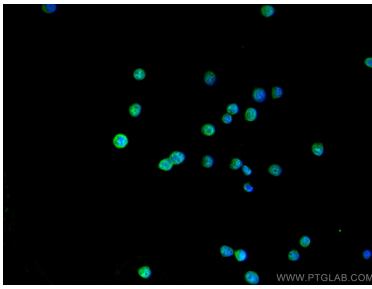
**Lagerungsbedingungen:**  
Bei -20°C lagern. Nach dem Versand ein Jahr lang stabil  
**Lagerungspuffer:**  
PBS mit 0.02% Natriumazid und 50% Glycerin pH 7.3.  
Aliquotieren ist nicht notwendig bei -20°C Lagerung

\*\*\* 20ul-Größen enthalten 0.1% BSA

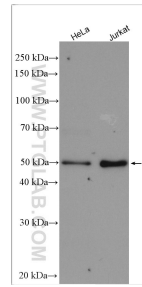
For technical support and original validation data for this product please contact:  
T: 1 (888) 4PTGLAB (1-888-478-4522) (toll free in USA), or 1(312) 455-8498 (outside USA)  
E: [proteintech@ptglab.com](mailto:proteintech@ptglab.com)  
W: [ptglab.com](http://ptglab.com)

This product is exclusively available under Proteintech Group brand and is not available to purchase from any other manufacturer.

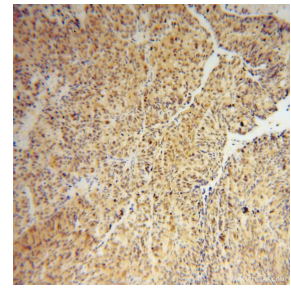
## Ausgewählte Validierungsdaten



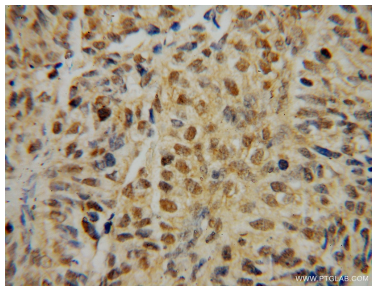
Immunofluorescent analysis of (4% PFA) fixed Jurkat cells using IRF2 antibody (12525-1-AP) at dilution of 1:400 and CoraLite®488-Conjugated AffiniPure Goat Anti-Rabbit IgG(H+L).



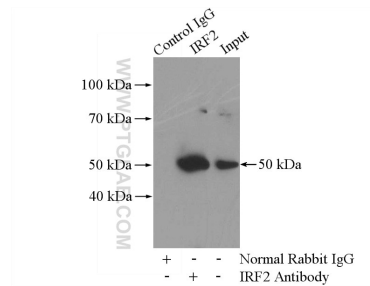
Various lysates were subjected to SDS PAGE followed by western blot with 12525-1-AP (IRF2 antibody) at dilution of 1:2000 incubated at room temperature for 1.5 hours.



Immunohistochemical analysis of paraffin-embedded human colon cancer using 12525-1-AP (IRF2 antibody) at dilution of 1:50 (under 10x lens).



Immunohistochemical analysis of paraffin-embedded human colon cancer using 12525-1-AP (IRF2 antibody) at dilution of 1:50 (under 40x lens).



IP Result of anti-IRF2 (IP:12525-1-AP, 4ug; Detection:12525-1-AP 1:500) with Jurkat cells lysate 2800ug.