

Allgemeine Informationen

Katalog-Nr.: 12580-1-AP	GenBank-Zugangsnummer: BC030828	Reinigungsmethode: Antigen-Affinitätsreinigung
Größe: 150ul, Konzentration: 300 µg/ml von Nanodrop und 287 µg/ml durch die Bradford-Methode mit BSA als Standard;	GeneID (NCBI): 10085	Empfohlene Verdünnungen: WB 1:500-1:3000 IHC 1:50-1:500 IF 1:50-1:200
Wirt: Kaninchen	Vollständiger Name: EGF-like repeats and discoidin I-like domains 3	
Isotyp: IgG	Berechnete Masse: 52 kDa	
Immunogen Katalognummer: AG3274	Beobachtete Masse: 52-55 kDa	

Anwendungen

Geprüfte Anwendungen:

IF, IHC, WB, ELISA

In Publikationen genannte Anwendungen:

CoIP, ELISA, IF, IHC, WB

Getestete Reaktivität:

Human, Maus, Ratte

Zitierte Arten:

Human, Maus

Hinweis-IHC: Antigenmaskierung mit TE-Puffer pH 9,0 empfohlen. (*) Wahlweise kann die Antigenmaskierung auch mit Citratpuffer pH 6,0 erfolgen.

Positivkontrollen:

WB: HEK-293-Zellen, COLO 320-Zellen, HeLa-Zellen, HepG2-Zellen, humanes Lungengewebe, K-562-Zellen, Maushirngewebe, Mauslungengewebe

IHC: humanes Pankreaskarzinomgewebe, humanes Leberkarzinomgewebe, humanes Lungenkarzinomgewebe

IF: HeLa-Zellen,

Hintergrundinformationen

EGF-like repeats and discoidin I-like domain-containing protein 3 (EDIL3), also named as DEL1 or integrin-binding protein DEL1, is a 52-kDa extracellular matrix protein produced by endothelial cells in embryos (PMID: 9420328). It is composed of three EGF repeats and two discoidin I-like domains. The second EGF repeat contains an RGD motif. EDIL3 promotes adhesion of endothelial cells through interaction with the alpha-v/beta-3 integrin receptor. It may be involved in vascular remodeling during angiogenesis (PMID: 12840057; 14981004). EDIL3 has also been reported to be an endogenous inhibitor of inflammatory cell recruitment by interfering with the integrin LFA-1-dependent leukocyte-endothelial adhesion (PMID: 19008446).

Bemerkenswerte Veröffentlichungen

Verfasser	Pubmed ID	Journal	Anwendung
Tomoki Maekawa	26374165	Nat Commun	ELISA
Won-Young Kim	31506547	Sci Rep	
Ming-Xuan Feng	25273699	Mol Cancer	WB, IHC

Lagerung

Lagerungsbedingungen:

Bei -20°C lagern. Nach dem Versand ein Jahr lang stabil

Lagerungspuffer:

PBS mit 0.02% Natriumazid und 50% Glycerin pH 7.3.

Aliquotieren ist nicht notwendig bei -20°C Lagerung

*** 20ul-Größen enthalten 0.1% BSA

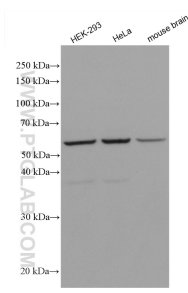
For technical support and original validation data for this product please contact:

T: 1 (888) 4PTGLAB (1-888-478-4522) (toll free in USA), or 1(312) 455-8498 (outside USA)

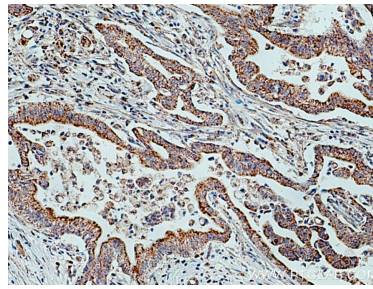
E: proteintech@ptglab.com
 W: ptglab.com

This product is exclusively available under Proteintech Group brand and is not available to purchase from any other manufacturer.

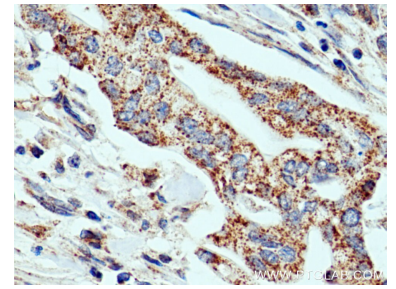
Ausgewählte Validierungsdaten



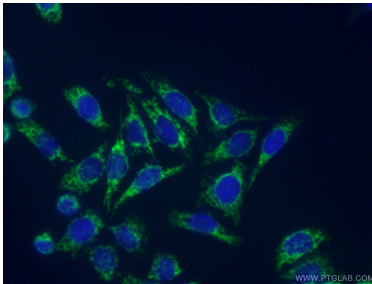
Various lysates were subjected to SDS PAGE followed by western blot with 12580-1-AP (EDIL3 antibody) at dilution of 1:1500 incubated at room temperature for 1.5 hours.



Immunohistochemical analysis of paraffin-embedded human pancreas cancer tissue slide using 12580-1-AP (EDIL3 antibody) at dilution of 1:200 (under 10x lens). Heat mediated antigen retrieval with Tris-EDTA buffer (pH 9.0).



Immunohistochemical analysis of paraffin-embedded human pancreas cancer tissue slide using 12580-1-AP (EDIL3 antibody) at dilution of 1:200 (under 40x lens). Heat mediated antigen retrieval with Tris-EDTA buffer (pH 9.0).



Immunofluorescent analysis of (-20°C Ethanol) fixed HeLa cells using 12580-1-AP (EDIL3 antibody) at dilution of 1:50 and Alexa Fluor 488-conjugated AffiniPure Goat Anti-Rabbit IgG(H+L).