

Nur für Forschungszwecke

Integrin Beta 1 Polyklonaler Antikörper



Katalog-Nr.:12594-1-AP

Vorgestelltes Produkt

51 Publikationen

Allgemeine Informationen

Katalog-Nr.: 12594-1-AP	GenBank-Zugangsnummer: BC020057	Reinigungsmethode: Antigen-Affinitätsreinigung
Größe: 150ul , Konzentration: 900 µg/ml von Nanodrop;	GeneID (NCBI): 3688	Empfohlene Verdünnungen: WB 1:1000-1:8000 IHC 1:50-1:500 IF 1:50-1:500
Wirt: Kaninchen	Vollständiger Name: integrin, beta 1 (fibronectin receptor, beta polypeptide, antigen CD29 includes MDF2, MSK12)	
Isotyp: IgG	Berechnete Masse: 88 kDa	
Immunogen Katalognummer: AG3078	Beobachtete Masse: 130 kDa	

Anwendungen

Geprüfte Anwendungen: IF, IHC, WB, ELISA	Positivkontrollen: WB : HT-1080.Zellen, HeLa-Zellen IHC : humanes Plazenta-Gewebe, humanes Mammakarzinomgewebe, Mausnierengewebe IF : Mauslebergewebe,
In Publikationen genannte Anwendungen: IF, IHC, IP, WB	
Getestete Reaktivität: Human, Maus, Ratte	
Zitierte Arten: Huhn, Human, Maus, Ratte, Rind, Sikahirsch	
Hinweis-IHC: Antigenmaskierung mit TE-Puffer pH 9,0 empfohlen. (*) Wahlweise kann die Antigenmaskierung auch mit Citratpuffer pH 6,0 erfolgen.	

Hintergrundinformationen

Integrin beta-1 (ITGB1), also named as CD29, is a 130 kDa single chain type I glycoprotein that is expressed in a heterodimeric complex with one of six distinct α subunits, comprising the very late activation antigen (VLA) subfamily of adhesion receptors. It is one of the essential surface molecules expressed on human MSC from bone marrow and other sources. The $\beta 1$ subunit is also broadly expressed on lymphocytes and monocytes, weakly expressed on granulocytes, and not expressed on erythrocytes. These receptors are involved in a variety of cell-cell and cell-matrix interactions.

Bemerkenswerte Veröffentlichungen

Verfasser	Pubmed ID	Journal	Anwendung
Qiaoyan Yu	36155064	Biochem Biophys Res Commun	WB
Lele Niu	36068215	Cell Discov	IHC,IF
Huijiao Lv	36120570	Front Cell Dev Biol	IF

Lagerung

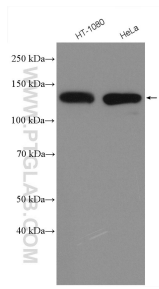
Lagerungsbedingungen:
Bei -20°C lagern. Nach dem Versand ein Jahr lang stabil
Lagerungspuffer:
PBS mit 0.02% Natriumazid und 50% Glycerin pH 7.3.
Aliquotieren ist nicht notwendig bei -20°C Lagerung

*** 20ul-Größen enthalten 0.1% BSA

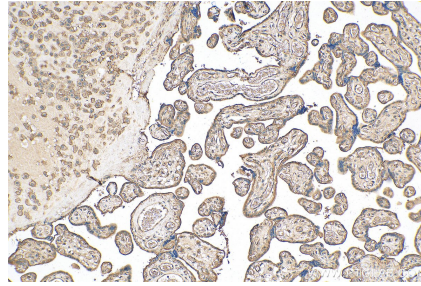
For technical support and original validation data for this product please contact:
T: 1 (888) 4PTGLAB (1-888-478-4522) (toll free in USA), or 1(312) 455-8498 (outside USA)
E: proteintech@ptglab.com
W: ptglab.com

This product is exclusively available under Proteintech Group brand and is not available to purchase from any other manufacturer.

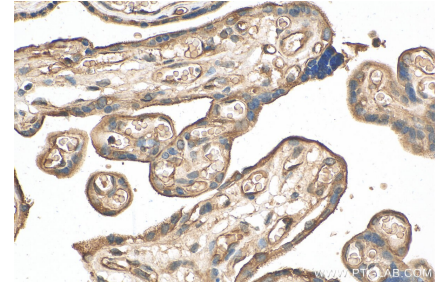
Ausgewählte Validierungsdaten



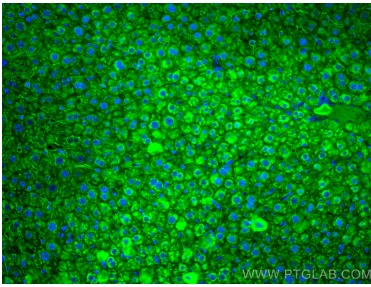
HT-1080 cells were subjected to SDS PAGE followed by western blot with 12594-1-AP (Integrin Beta 1 antibody) at dilution of 1:4000 incubated at room temperature for 1.5 hours.



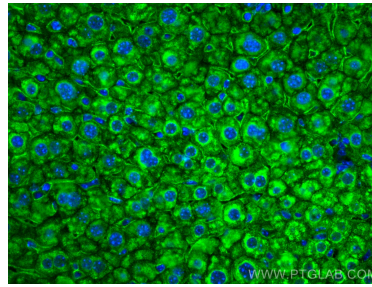
Immunohistochemical analysis of paraffin-embedded human placenta tissue slide using 12594-1-AP (Integrin Beta 1 antibody) at dilution of 1:200 (under 10x lens). Heat mediated antigen retrieval with Tris-EDTA buffer (pH 9.0).



Immunohistochemical analysis of paraffin-embedded human placenta tissue slide using 12594-1-AP (Integrin Beta 1 antibody) at dilution of 1:200 (under 40x lens). Heat mediated antigen retrieval with Tris-EDTA buffer (pH 9.0).



Immunofluorescent analysis of (4% PFA) fixed mouse liver tissue using Integrin Beta 1 antibody (12594-1-AP) at dilution of 1:200 and CoraLite®488-Conjugated AffiniPure Goat Anti-Rabbit IgG(H+L).



Immunofluorescent analysis of (4% PFA) fixed mouse liver tissue using Integrin Beta 1 antibody (12594-1-AP) at dilution of 1:200 and CoraLite®488-Conjugated AffiniPure Goat Anti-Rabbit IgG(H+L).