

Allgemeine Informationen

Katalog-Nr.: 12609-1-AP	GenBank-Zugangsnummer: BC032861	Reinigungsmethode: Antigen-Affinitätsreinigung
Größe: 150ul , Konzentration: 400 µg/ml von Nanodrop;	GeneID (NCBI): 7490	Empfohlene Verdünnungen: WB 1:500-1:3000 IF 1:50-1:500
Wirt: Kaninchen	Vollständiger Name: Wilms tumor 1	
Isotyp: IgG	Berechnete Masse: 449 aa, 49 kDa, 57 kDa	
Immunogen Katalognummer: AG3337	Beobachtete Masse: 52-55 kDa	

Anwendungen

Geprüfte Anwendungen:

FC, IF, WB, ELISA

In Publikationen genannte Anwendungen:

chIP, IF, WB

Getestete Reaktivität:

Human, Maus, Ratte

Zitierte Arten:

Huhn, Human, Maus, Ziege

Positivkontrollen:

WB : K-562-Zellen, A431-Zellen, humanes Lebergewebe, Mausnierengewebe, MCF-7-Zellen, Rattennierengewebe

IF : K-562-Zellen,

Hintergrundinformationen

The WT1 gene encodes a zinc finger DNA-binding protein that acts as a transcriptional activator or repressor depending on the cellular or chromosomal context, and it is required for normal formation of the genitourinary system and mesothelial tissues. WT1 inhibits apoptosis through p53 and Bcl-2 and also inhibits the differentiation of leukemic cells. Function of WT1 may be isoform-specific: isoforms lacking the KTS motif may act as transcription factors. Isoforms containing the KTS motif may bind mRNA and play a role in mRNA metabolism or splicing. Isoform 1 has lower affinity for DNA, and can bind RNA. WT1 exists some isoforms with the range of molecular weight is 33-50 kDa.

Bemerkenswerte Veröffentlichungen

Verfasser	Pubmed ID	Journal	Anwendung
G Hua	26364602	Oncogene	WB, IHC
Zhengming Zhu	34490476	Mol Med Rep	WB
Xian Wang	36147345	Front Pharmacol	WB,IHC

Lagerung

Lagerungsbedingungen:

Bei -20°C lagern. Nach dem Versand ein Jahr lang stabil

Lagerungspuffer:

PBS mit 0.02% Natriumazid und 50% Glycerin pH 7.3.

Aliquotieren ist nicht notwendig bei -20°C Lagerung

***** 20ul-Größen enthalten 0.1% BSA**

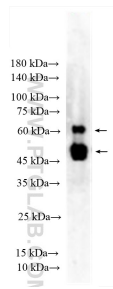
For technical support and original validation data for this product please contact:

T: 1 (888) 4PTGLAB (1-888-478-4522) (toll free in USA), or 1(312) 455-8498 (outside USA)

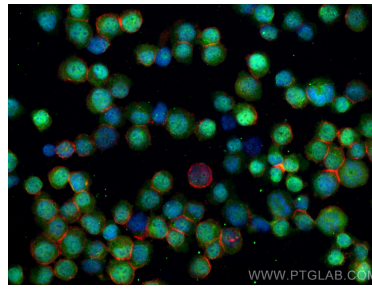
E: proteintech@ptglab.com
 W: ptglab.com

This product is exclusively available under Proteintech Group brand and is not available to purchase from any other manufacturer.

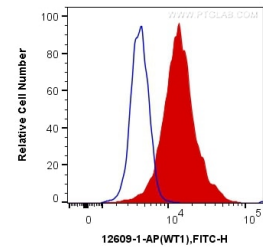
Ausgewählte Validierungsdaten



K-562 cells were subjected to SDS PAGE followed by western blot with 12609-1-AP (WT1 antibody) at dilution of 1:1500 incubated at room temperature for 1.5 hours.



Immunofluorescent analysis of (4% PFA) fixed K-562 cells using WT1 antibody (12609-1-AP) at dilution of 1:200 and CoraLite@488-Conjugated AffiniPure Goat Anti-Rabbit IgG(H+L), CL594-Phalloidin (red).



1×10^6 K-562 cells were intracellularly stained with 0.4 μ g Anti-Human WT1 (12609-1-AP) and CoraLite@488-Conjugated AffiniPure Goat Anti-Rabbit IgG(H+L) at dilution 1:1000 (red), or 0.4 μ g Control Antibody. Cells were fixed and permeabilized with Transcription Factor Staining Buffer Kit (PF00011).