

## Allgemeine Informationen

<b>Katalog-Nr.:</b> 12632-1-AP	<b>GenBank-Zugangsnummer:</b> BC032940	<b>Reinigungsmethode:</b> Antigen-Affinitätsreinigung
<b>Größe:</b> 150ul , Konzentration: 400 µg/ml von Nanodrop;	<b>GeneID (NCBI):</b> 27074	<b>Empfohlene Verdünnungen:</b> WB 1:1000-1:8000 IP 0.5-4.0 ug für IP und 1:500-1:1000 für WB IHC 1:20-1:200
<b>Wirt:</b> Kaninchen	<b>Vollständiger Name:</b> lysosomal-associated membrane protein 3	
<b>Isotyp:</b> IgG	<b>Berechnete Masse:</b> 416 aa, 44 kDa	
<b>Immunogen Katalognummer:</b> AG3325	<b>Beobachtete Masse:</b> 70 kDa	

## Anwendungen

### Geprüfte Anwendungen:

IHC, IP, WB, ELISA

### In Publikationen genannte Anwendungen:

IF, IHC, WB

### Getestete Reaktivität:

Human, Maus, Ratte

### Zitierte Arten:

Affe, Human, Maus

### Positivkontrollen:

**WB** : A375-Zellen, A549-Zellen, HEK-293T-Zellen, Mauslungengewebe, Maus-Thymusgewebe, Raji-Zellen, Rattenlungengewebe

**IP** : A549-Zellen,

**IHC** : humanes Lungengewebe, humanes Hodengewebe, humanes Plazenta-Gewebe

**Hinweis-IHC: Antigenmaskierung mit TE-Puffer pH 9,0 empfohlen. (\*) Wahlweise kann die Antigenmaskierung auch mit Citratpuffer pH 6,0 erfolgen.**

## Hintergrundinformationen

LAMP3 (lysosome-associated membrane protein 3), also known as DC-LAMP (DC-lysosome-associated membrane glycoprotein), TSC403 or CD208, is a highly glycosylated lysosomal membrane protein that belongs to the LAMP family. The mature glycoprotein has an apparent molecular mass of 70-90 kDa, which is considerably larger than its predicted mass of 44 kDa (PMID: 9768752). LAMP3 is expressed in lung type II pneumocytes, lymphoid organs and dendritic cells. It might change the lysosome function after the transfer of peptide-MHC class II molecules to the surface of dendritic cells. LAMP3 mRNA is up-regulated in some human cancers (PMID:9721848). LAMP3 overexpression is associated with an enhanced metastatic potential and may be a prognostic factor for cervical cancer (PMID: 16204031).

## Bemerkenswerte Veröffentlichungen

Verfasser	Pubmed ID	Journal	Anwendung
Carlos López	32953267	PeerJ	IHC
Behzad Yeganeh	25361566	Am J Physiol Lung Cell Mol Physiol	IF
Zhichang Zhang	36305631	Clin Transl Med	IF

## Lagerung

### Lagerungsbedingungen:

Bei -20°C lagern. Nach dem Versand ein Jahr lang stabil

### Lagerungspuffer:

PBS mit 0.02% Natriumazid und 50% Glycerin pH 7.3.

Aliquotieren ist nicht notwendig bei -20°C Lagerung

**\*\*\* 20ul-Größen enthalten 0.1% BSA**

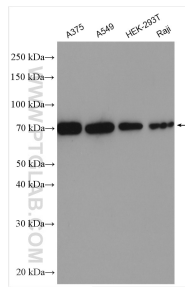
For technical support and original validation data for this product please contact:

T: 1 (888) 4PTGLAB (1-888-478-4522) (toll free in USA), or 1(312) 455-8498 (outside USA)

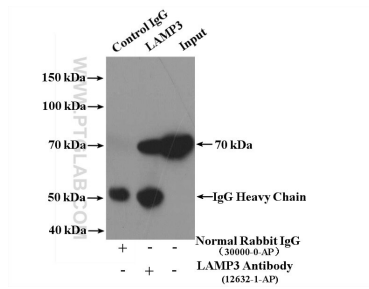
E: [proteintech@ptglab.com](mailto:proteintech@ptglab.com)  
 W: [ptglab.com](http://ptglab.com)

**This product is exclusively available under Proteintech Group brand and is not available to purchase from any other manufacturer.**

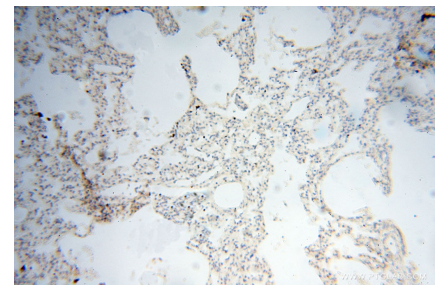
## Ausgewählte Validierungsdaten



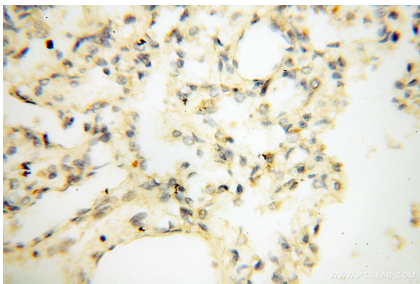
Various lysates were subjected to SDS PAGE followed by western blot with 12632-1-AP (LAMP3 antibody) at dilution of 1:4000 incubated at room temperature for 1.5 hours.



IP Result of anti-LAMP3 (IP:12632-1-AP, 4ug; Detection:12632-1-AP 1:500) with A549 cells lysate 2800ug.



Immunohistochemical analysis of paraffin-embedded human lung using 12632-1-AP (LAMP3 antibody) at dilution of 1:50 (under 10x lens).



Immunohistochemical analysis of paraffin-embedded human lung using 12632-1-AP (LAMP3 antibody) at dilution of 1:50 (under 40x lens).