

Nur für Forschungszwecke

PPP2R5A Polyklonaler Antikörper

Katalog-Nr.:12675-2-AP

Vorgestelltes Produkt

3 Publikationen



Allgemeine Informationen

Katalog-Nr.:
12675-2-AP

Größe:
150ul, Konzentration: 450 µg/ml von
Nanodrop;

Wirt:
Kaninchen

Isotyp:
IgG

Immunogen Katalognummer:
AG3360

GenBank-Zugangsnummer:
BC022474

GeneID (NCBI):
5525

Vollständiger Name:
protein phosphatase 2, regulatory
subunit B', alpha isoform

Berechnete Masse:
486 aa, 56 kDa

Beobachtete Masse:
56 kDa

Reinigungsmethode:

Antigen-Affinitätsreinigung

Empfohlene Verdünnungen:

WB 1:300-1:1000
IP 0.5-4.0 µg für IP und 1:500-1:1000
für WB
IHC 1:50-1:500
IF 1:50-1:500

Anwendungen

Geprüfte Anwendungen:
IF, IHC, IP, WB, ELISA

In Publikationen genannte Anwendungen:
IHC, WB

Getestete Reaktivität:
Human, Maus, Ratte

Zitierte Arten:
Human

Hinweis-IHC: Antigendemaskierung mit TE-Puffer pH 9,0 empfohlen. (*) Wahlweise kann die Antigendemaskierung auch mit Citratpuffer pH 6,0 erfolgen.

Positivkontrollen:

WB: humanes Leumgewebe, HeLa-Zellen, humanes Herzgewebe, humanes Hirngewebe, humanes Lungengewebe, humanes Nierengewebe, Mausherzgewebe, Rattenherzgewebe

IP: Maushirngewebe,

IHC: humanes Pankreaskarzinomgewebe,

IF: HepG2-Zellen,

Hintergrundinformationen

PPP2R5A (protein phosphatase 2, regulatory subunit B (B56), alpha isoform) is also named as PR61alpha and belongs to the phosphatase 2A regulatory subunit B56 family. B56 alpha subunit gene encodes a cytoplasmic phosphoprotein (PMID:7592815). The B regulatory subunit might modulate substrate selectivity and catalytic activity, and also might direct the localization of the catalytic enzyme to a particular subcellular compartment. This protein has 2 isoforms produced by alternative splicing with the molecular weight of 54 kDa and 50 kDa.

Bemerkenswerte Veröffentlichungen

Verfasser	Pubmed ID	Journal	Anwendung
Xiaoman Zhu	36096985	Cell Death Dis	WB
Siwen Yin	35154432	Oncol Lett	WB
Zehang Zhuang	28849187	Oncol Rep	WB, IHC

Lagerung

Lagerungsbedingungen:

Bei -20°C lagern. Nach dem Versand ein Jahr lang stabil

Lagerungspuffer:

PBS mit 0.02% Natriumazid und 50% Glycerin pH 7.3.

Aliquotieren ist nicht notwendig bei -20°C Lagerung

*** 20ul-Größen enthalten 0.1% BSA

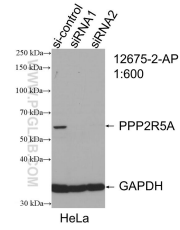
For technical support and original validation data for this product please contact:

T: 1 (888) 4PTGLAB (1-888-478-4522) (toll free in USA), or 1(312) 455-8498 (outside USA)

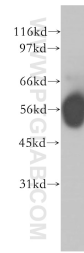
E: proteintech@ptglab.com
W: ptglab.com

This product is exclusively available under Proteintech Group brand and is not available to purchase from any other manufacturer.

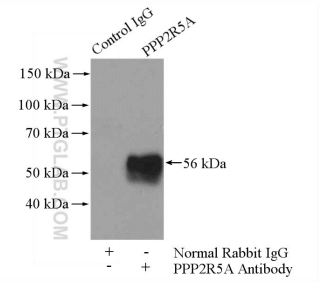
Ausgewählte Validierungsdaten



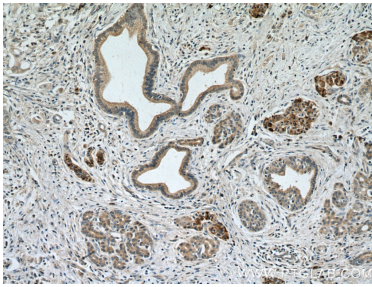
WB result of PPP2R5A antibody (12675-2-AP; 1:600; incubated at room temperature for 1.5 hours) with sh-Control and sh-PPP2R5A transfected HeLa cells.



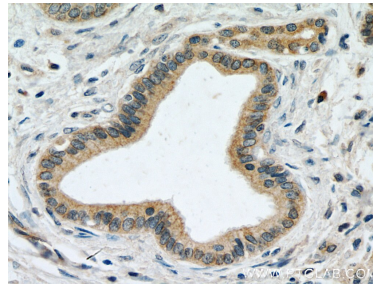
human ileum tissue were subjected to SDS PAGE followed by western blot with 12675-2-AP (PPP2R5A antibody) at dilution of 1:400 incubated at room temperature for 1.5 hours.



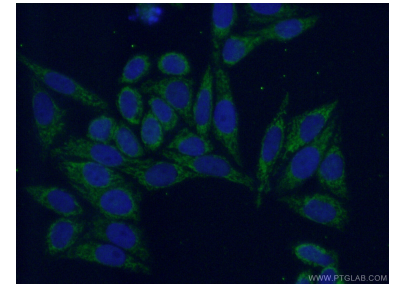
IP Result of anti-PPP2R5A (IP:12675-2-AP, 4ug; Detection:12675-2-AP 1:500) with mouse brain tissue lysate 4000ug.



Immunohistochemical analysis of paraffin-embedded human pancreas cancer tissue slide using 12675-2-AP (PPP2R5A antibody) at dilution of 1:200 (under 10x lens. Heat mediated antigen retrieval with Tris-EDTA buffer (pH 9.0).



Immunohistochemical analysis of paraffin-embedded human pancreas cancer tissue slide using 12675-2-AP (PPP2R5A antibody) at dilution of 1:200 (under 40x lens. Heat mediated antigen retrieval with Tris-EDTA buffer (pH 9.0).



Immunofluorescent analysis of (4% PFA) fixed HepG2 cells using 12675-2-AP (PPP2R5A antibody) at dilution of 1:50 and Alexa Fluor 488-conjugated AffiniPure Goat Anti-Rabbit IgG(H+L).