

Allgemeine Informationen

Katalog-Nr.:
12676-1-AP

Größe:
150ul, Konzentration: 400 µg/ml von
Nanodrop und 393 µg/ml durch die
Bradford-Methode mit BSA als
Standard;

Wirt:
Kaninchen

Isotyp:
IgG

Immunogen Katalognummer:
AG3363

GenBank-Zugangsnummer:
BC024239

GeneID (NCBI):
84100

Vollständiger Name:
ADP-ribosylation factor-like 6

Berechnete Masse:
186 aa, 21 kDa

Beobachtete Masse:
21 kDa

Reinigungsmethode:

Antigen-Affinitätsreinigung

Empfohlene Verdünnungen:

WB 1:500-1:2000
IP 0.5-4.0 µg für IP und 1:500-1:1000
für WB
IHC 1:50-1:500
IF 1:20-1:200

Anwendungen

Geprüfte Anwendungen:

IF, IHC, IP, WB, ELISA

In Publikationen genannte Anwendungen:

IF, IHC, WB

Getestete Reaktivität:

Human, Maus, Ratte

Zitierte Arten:

Human, Maus

Hinweis-IHC: Antigendemaskierung mit TE-Puffer pH 9,0 empfohlen. (*) Wahlweise kann die Antigendemaskierung auch mit Citratpuffer pH 6,0 erfolgen.

Positivkontrollen:

WB: Rattenhirngewebe, HEK-293T-Zellen, humanes
Hirngewebe, Maushirngewebe

IP: Rattenhirngewebe,

IHC: humanes Nierengewebe,

IF: hTERT-RPE1-Zellen, MDCK-Zellen

Hintergrundinformationen

ADP-ribosylation factor-like protein 6 (ARL6), belongs to a small GTPase superfamily, is involved in membrane protein trafficking at the base of the ciliary organelle. ARL6 is also named Bardet-Biedl syndrome 3 protein, because defects in ARL6 are a cause of Bardet-Biedl syndrome type 3 (BBS3), which is a genetically heterogeneous disorder characterized by usually severe pigmentary retinopathy, early onset obesity, polydactyly, hypogenitalism, renal malformation and mental retardation. ARL6 can interact with many ARL6 interacting proteins and form BBSome complex with other BBS proteins including BBS1, BBS2, BBS4 and so on.

Bemerkenswerte Veröffentlichungen

Verfasser	Pubmed ID	Journal	Anwendung
Ying Hsu	29049287	PLoS Genet	WB
Shichao Duan	33241915	EMBO J	WB, IF
Minati Singh	31072410	Mol Brain	WB

Lagerung

Lagerungsbedingungen:

Bei -20°C lagern. Nach dem Versand ein Jahr lang stabil

Lagerungspuffer:

PBS mit 0.02% Natriumazid und 50% Glycerin pH 7.3.

Aliquotieren ist nicht notwendig bei -20°C Lagerung

*** 20ul-Größen enthalten 0.1% BSA

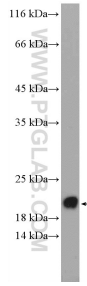
For technical support and original validation data for this product please contact:

T: 1 (888) 4PTGLAB (1-888-478-4522) (toll free
in USA), or 1(312) 455-8498 (outside USA)

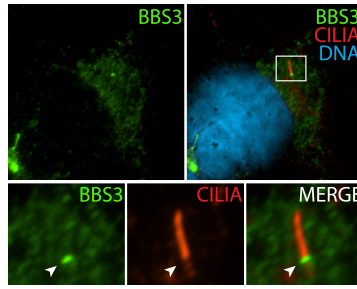
E: proteintech@ptglab.com
W: ptglab.com

This product is exclusively available under Proteintech Group brand and is not available to purchase from any other manufacturer.

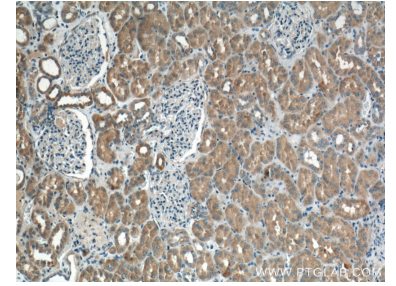
Ausgewählte Validierungsdaten



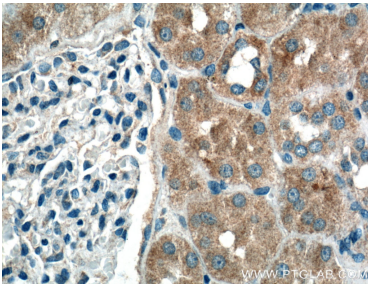
rat brain tissue were subjected to SDS PAGE followed by western blot with 12676-1-AP (BBS3 Antibody) at dilution of 1:1000 incubated at room temperature for 1.5 hours.



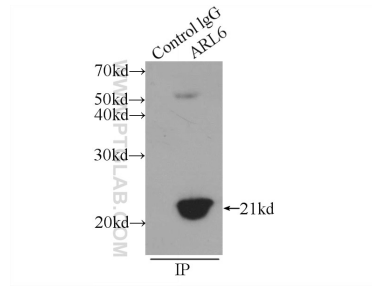
IF result (cytoplasm and the base of cilia stain) of anti-BBS3 (12676-1-AP; 1:50) with hTERT-RPE1 cell (MeOH fixed) by Dr. Moshe Kim.



Immunohistochemical analysis of paraffin-embedded human kidney tissue slide using 12676-1-AP (BBS3 Antibody) at dilution of 1:200 (under 10x lens).



Immunohistochemical analysis of paraffin-embedded human kidney tissue slide using 12676-1-AP (BBS3 Antibody) at dilution of 1:200 (under 40x lens).



IP Result of anti-BBS3 (IP:12676-1-AP, 3ug; Detection:12676-1-AP 1:600) with rat brain tissue lysate 5200ug.