

Nur für Forschungszwecke

# GLIS3 Polyklonaler Antikörper

Katalog-Nr.:12678-1-AP



## Allgemeine Informationen

<b>Katalog-Nr.:</b> 12678-1-AP	<b>GenBank-Zugangsnummer:</b> BC033899	<b>Reinigungsmethode:</b> Antigen-Affinitätsreinigung
<b>Größe:</b> 150ul, Konzentration: 400 µg/ml von Nanodrop und 287 µg/ml durch die Bradford-Methode mit BSA als Standard;	<b>GeneID (NCBI):</b> 169792	<b>Empfohlene Verdünnungen:</b> WB 1:200-1:1000
<b>Wirt:</b> Kaninchen	<b>Vollständiger Name:</b> GLIS family zinc finger 3	
<b>Isotyp:</b> IgG	<b>Berechnete Masse:</b> 775 aa, 84 kDa	
<b>Immunogen Katalognummer:</b> AG3366	<b>Beobachtete Masse:</b> 70-85 kDa	

## Anwendungen

<b>Geprüfte Anwendungen:</b> WB, ELISA	<b>Positivkontrollen:</b> WB : Mausnierengewebe, A549-Zellen, BxPC-3-Zellen, HepG2-Zellen
<b>Getestete Reaktivität:</b> Human, Maus, Ratte	

## Hintergrundinformationen

Zinc-finger proteins contain DNA-binding domains and have a wide variety of functions, most of which encompass some form of transcriptional activation or repression. GLIS3 (gLIIS family zinc finger 3), also known as ZNF515 that localizes to the nucleus and contains five C2H2-type zinc fingers. Expressed in a variety of tissues, including kidney, brain, liver, lung, ovary, pancreas, thymus and skeletal muscle, GLIS3 functions as both an activator and a suppressor of transcription, specifically binding the consensus sequence 5'-GACCACCCAC-3' through its C2H2-type zinc fingers. Defects in the gene encoding GLIS3 are a cause of NDH syndrome; a neonatal diabetes that is characterized by congenital hypothyroidism, congenital glaucoma, hepatic fibrosis and polycystic kidneys. There are various isoform of GLIS3 and molecular weight of one isoform is 70 kDa.

## Lagerung

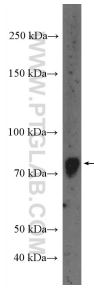
**Lagerungsbedingungen:**  
Bei -20°C lagern. Nach dem Versand ein Jahr lang stabil  
**Lagerungspuffer:**  
PBS mit 0.02% Natriumazid und 50% Glycerin pH 7.3.  
**Aliquotieren ist nicht notwendig bei -20°C Lagerung**

**\*\*\* 20ul-Größen enthalten 0.1% BSA**

For technical support and original validation data for this product please contact:  
T: 1 (888) 4PTGLAB (1-888-478-4522) (toll free in USA), or 1(312) 455-8498 (outside USA)  
E: proteintech@ptglab.com  
W: ptglab.com

**This product is exclusively available under Proteintech Group brand and is not available to purchase from any other manufacturer.**

## Ausgewählte Validierungsdaten



mouse kidney tissue were subjected to SDS PAGE followed by western blot with 12678-1-AP (GLIS3 Antibody) at dilution of 1:300 incubated at room temperature for 1.5 hours.