

Nur für Forschungszwecke

Dystrophin Polyklonaler Antikörper

Katalog-Nr.:12715-1-AP

Vorgestelltes Produkt

20 Publikationen



Allgemeine Informationen

Katalog-Nr.: 12715-1-AP	GenBank-Zugangsnummer: BC028720	Reinigungsmethode: Antigen-Affinitätsreinigung
Größe: 150ul, Konzentration: 1000 µg/ml von 1756 Nanodrop;	GeneID (NCBI): Vollständiger Name: dystrophin	Empfohlene Verdünnungen: WB 1:3000-1:15000 IP 0.5-4.0 µg für IP und 1:500-1:3000 für WB IHC 1:50-1:500 IF 1:20-1:200
Wirt: Kaninchen	Berechnete Masse: 3685 aa, 427 kDa	
Isotyp: IgG	Beobachtete Masse: 70 kDa, 430 kDa	
Immunogen Katalognummer: AG3408		

Anwendungen

Geprüfte Anwendungen:

IF, IHC, IP, WB, ELISA

In Publikationen genannte Anwendungen:

IF, IHC, IP, WB

Getestete Reaktivität:

Human, Maus, Ratte

Zitierte Arten:

Human, Maus, Ratte

Positivkontrollen:

WB: Maushirngewebe, HepG2-Zellen

IP: Maushirngewebe,

IHC: humanes Skelettmuskelgewebe, humanes Herzgewebe, Mausherzgewebe, Maus-Skelettmuskelgewebe

IF: Maus-Skelettmuskelgewebe, Rattenherzgewebe

Hinweis-IHC: Antigendemaskierung mit TE-Puffer pH 9,0 empfohlen. (*) Wahlweise kann die Antigendemaskierung auch mit Citratpuffer pH 6,0 erfolgen.

Hintergrundinformationen

Dystrophin (DMD or BMD) is a large muscle protein whose mutations cause Duchenne muscular dystrophy (DMD) and Becker muscular dystrophy (BMD), the childhood neuromuscular disorders that result in progressive muscle weakness, respiratory difficulties and cardiovascular dysfunction. Dystrophin is a crucial component of the dystrophin-glycoprotein complex which is essential for muscle membrane integrity and stability. Dystrophin is located on the cytoplasmic face of the sarcolemma and connects the cytoskeletal network to the sarcolemma and extracellular matrix. Multiple isoforms of dystrophin exist due to the alternative splicing, with a wide range of MW (69-72, 110-143, 271, 426 kDa). Most tissues contain transcripts of several isoforms.

Bemerkenswerte Veröffentlichungen

Verfasser	Pubmed ID	Journal	Anwendung
Takahiro Fujimoto	32996569	Hum Mol Genet	WB,IP,IF
Jihad El Andari	36129972	Sci Adv	WB,IF
Wen-Tong Liu	30340642	J Neuroinflammation	WB

Lagerung

Lagerungsbedingungen:

Bei -20°C lagern. Nach dem Versand ein Jahr lang stabil

Lagerungspuffer:

PBS mit 0.02% Natriumazid und 50% Glycerin pH 7.3.

Aliquotieren ist nicht notwendig bei -20°C Lagerung

***** 20ul-Größen enthalten 0.1% BSA**

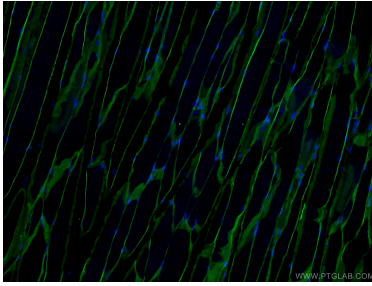
For technical support and original validation data for this product please contact:

T: 1 (888) 4PTGLAB (1-888-478-4522) (toll free in USA), or 1(312) 455-8498 (outside USA)

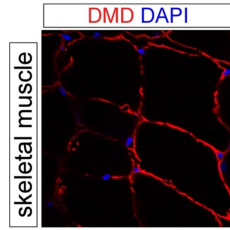
E: proteintech@ptglab.com
W: ptglab.com

This product is exclusively available under Proteintech Group brand and is not available to purchase from any other manufacturer.

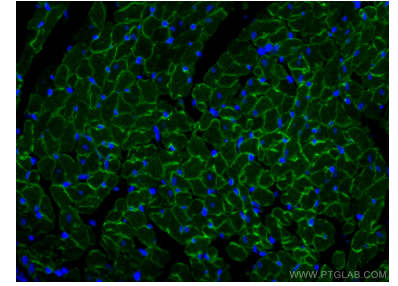
Ausgewählte Validierungsdaten



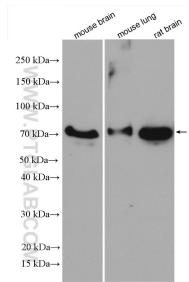
Immunofluorescent analysis of (4% PFA) fixed mouse skeletal muscle tissue using 12715-1-AP (Dystrophin antibody) at dilution of 1:50 and Alexa Fluor 488-conjugated AffiniPure Goat Anti-Rabbit IgG(H+L).



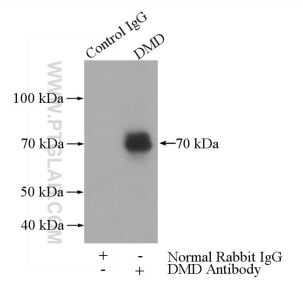
IF result of anti-DMD (12715-1-AP, 1:500) with PFA fixed mouse skeletal muscle tissue by Dr. Daniel Kopinke.



Immunofluorescent analysis of (4% PFA) fixed rat heart tissue using Dystrophin antibody (12715-1-AP) at dilution of 1:200 and CoraLite@488-Conjugated AffiniPure Goat Anti-Rabbit IgG(H+L), Connexin 43 antibody (26980-1-AP, green).



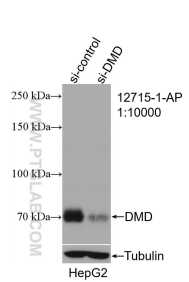
Various lysates were subjected to SDS PAGE followed by western blot with 12715-1-AP (Dystrophin antibody) at dilution of 1:5000 incubated at room temperature for 1.5 hours.



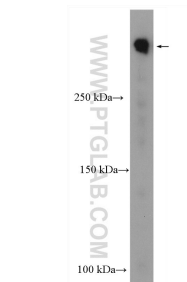
IP Result of anti-Dystrophin (IP:12715-1-AP, 4ug; Detection:12715-1-AP 1:1500) with mouse brain tissue lysate 3440ug.



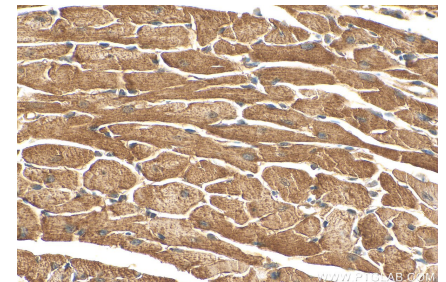
Immunohistochemical analysis of paraffin-embedded human skeletal muscle tissue slide using 12715-1-AP (Dystrophin antibody) at dilution of 1:200 (under 40x lens).



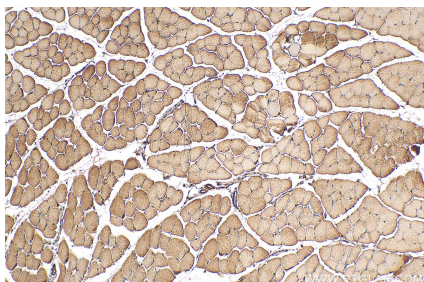
WB result of Dystrophin antibody (12715-1-AP; 1:10000; incubated at room temperature for 1.5 hours) with sh-Control and sh-Dystrophin transfected HepG2 cells.



HepG2 cells were subjected to SDS PAGE followed by western blot with 12715-1-AP (Dystrophin antibody) at dilution of 1:20000 incubated at room temperature for 1.5 hours.



Immunohistochemical analysis of paraffin-embedded mouse heart tissue slide using 12715-1-AP (Dystrophin antibody) at dilution of 1:200 (under 40x lens). Heat mediated antigen retrieval with Tris-EDTA buffer (pH 9.0).



Immunohistochemical analysis of paraffin-embedded mouse skeletal muscle tissue slide using 12715-1-AP (Dystrophin antibody) at dilution of 1:200 (under 10x lens). Heat mediated antigen retrieval with Tris-EDTA buffer (pH 9.0).