

Nur für Forschungszwecke

Complement factor H Polyklonaler Antikörper



Katalog-Nr.:12748-1-AP

1 Publikationen

Allgemeine Informationen

Katalog-Nr.: 12748-1-AP	GenBank-Zugangsnummer: BC037285	Reinigungsmethode: Antigen-Affinitätsreinigung
Größe: 150ul , Konzentration: 600 µg/ml von Nanodrop;	GeneID (NCBI): 3075	Empfohlene Verdünnungen: WB 1:1000-1:6000 IP 0.5-4.0 ug für IP und 1:500-1:2000 für WB
Wirt: Kaninchen	Vollständiger Name: complement factor H	IHC 1:50-1:500 IF 1:50-1:500
Isotyp: IgG	Berechnete Masse: 1231 aa, 139 kDa	
Immunogen Katalognummer: AG3482	Beobachtete Masse: 140-150 kDa	

Anwendungen

Geprüfte Anwendungen: IF, IHC, IP, WB, ELISA	Positivkontrollen: WB : human plasma, human blood IP : humanes Plasmagewebe, IHC : humanes Leberkarzinomgewebe, IF : humanes Leberkarzinomgewebe,
In Publikationen genannte Anwendungen: WB	
Getestete Reaktivität: Human	
Zitierte Arten: Human	
Hinweis-IHC: Antigendemaskierung mit TE-Puffer pH 9,0 empfohlen. (*) Wahlweise kann die Antigendemaskierung auch mit Citratpuffer pH 6,0 erfolgen.	

Hintergrundinformationen

Complement factor H (CFH) is an abundant plasma glycoprotein that regulates the function of the alternative complement pathway in fluid phase and on cellular surfaces (PMID: 2963625). Factor H binds to C3b, accelerates the decay of the alternative pathway C3-convertase (C3bBb) and acts as a cofactor for the factor I-mediated proteolytic inactivation of C3b (PMID: 15163532). It plays a critical role in the homeostasis of the complement system in plasma and in the protection of bystander host cells and tissues from damage by complement activation. Abnormalities in factor H have been associated with renal disease (PMID: 18190458).

Bemerkenswerte Veröffentlichungen

Verfasser	Pubmed ID	Journal	Anwendung
Muyao Ye	34642907	Immunol Res	WB

Lagerung

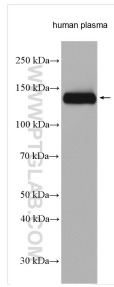
Lagerungsbedingungen:
Bei -20°C lagern. Nach dem Versand ein Jahr lang stabil
Lagerungspuffer:
PBS mit 0.02% Natriumazid und 50% Glycerin pH 7.3.
Aliquotieren ist nicht notwendig bei -20°C Lagerung

*** 20ul-Größen enthalten 0.1% BSA

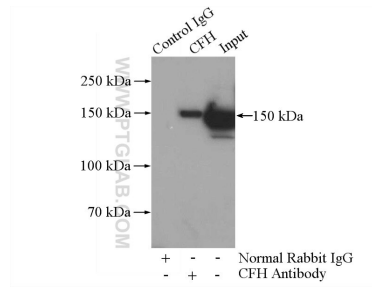
For technical support and original validation data for this product please contact:
T: 1 (888) 4PTGLAB (1-888-478-4522) (toll free in USA), or 1(312) 455-8498 (outside USA)
E: proteintech@ptglab.com
W: ptglab.com

This product is exclusively available under Proteintech Group brand and is not available to purchase from any other manufacturer.

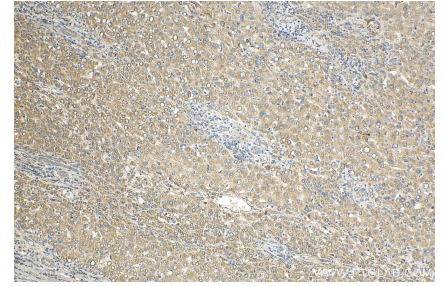
Ausgewählte Validierungsdaten



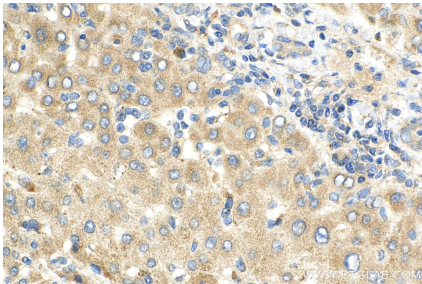
human plasma were subjected to SDS PAGE followed by western blot with 12748-1-AP (Complement factor H antibody) at dilution of 1:3000 incubated at room temperature for 1.5 hours.



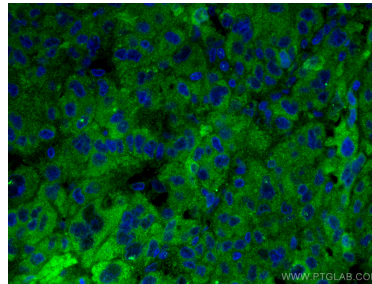
IP Result of anti-Complement factor H (IP:12748-1-AP, 4ug; Detection:12748-1-AP 1:1000) with human plasma lysate 4000ug.



Immunohistochemical analysis of paraffin-embedded human liver cancer tissue slide using 12748-1-AP (Complement factor H antibody) at dilution of 1:200 (under 10x lens). Heat mediated antigen retrieval with Tris-EDTA buffer (pH 9.0).



Immunohistochemical analysis of paraffin-embedded human liver cancer tissue slide using 12748-1-AP (Complement factor H antibody) at dilution of 1:200 (under 40x lens). Heat mediated antigen retrieval with Tris-EDTA buffer (pH 9.0).



Immunofluorescent analysis of (4% PFA) fixed human liver cancer tissue using Complement factor H antibody (12748-1-AP) at dilution of 1:200 and CoralLite® 488-Conjugated AffiniPure Goat Anti-Rabbit IgG(H+L).