

Allgemeine Informationen

Katalog-Nr.:
12769-1-AP

Größe:

150ul , Konzentration: 350 µg/ml von Nanodrop und 133 µg/ml durch die Bradford-Methode mit BSA als Standard;

Wirt:

Kaninchen

Isotyp:

IgG

Immunogen Katalognummer:
AG3451

GenBank-Zugangsnummer:

BC009696

GeneID (NCBI):

10581

Vollständiger Name:

interferon induced transmembrane protein 2 (1-8D)

Berechnete Masse:

132 aa, 15 kDa

Beobachtete Masse:

15 kDa

Reinigungsmethode:

Antigen-Affinitätsreinigung

Empfohlene Verdünnungen:

WB 1:1000-1:4000

IP 0.5-4.0 µg für IP und 1:200-1:1000

für WB

IHC 1:20-1:200

IF 1:20-1:200

Anwendungen

Geprüfte Anwendungen:

FC, IF, IHC, IP, WB, ELISA

In Publikationen genannte Anwendungen:

FC, IF, IP, WB

Getestete Reaktivität:

Human, Maus

Zitierte Arten:

Hausschwein, Human, Maus

Hinweis-IHC: Antigendemaskierung mit TE-Puffer pH 9,0 empfohlen. (*) Wahlweise kann die Antigendemaskierung auch mit Citratpuffer pH 6,0 erfolgen.

Positivkontrollen:

WB : HepG2-Zellen, MCF-7-Zellen

IP : HepG2-Zellen,

IHC : humanes Mammakarzinomgewebe, Maushirngewebe

IF : HepG2-Zellen,

Hintergrundinformationen

IFITM2, also named as 1-8D, belongs to the CD225 family. It is an IFN-induced antiviral protein that mediates cellular innate immunity to at least three major human pathogens, namely influenza A H1N1 virus, West Nile virus (WNV), and dengue virus, by inhibiting the early steps of replication. IFITM2 induces cell cycle arrest and mediates apoptosis by caspase activation and in p53-independent manner. It is overexpressed in colon carcinoma. IFITM2 is a novel pro-apoptotic gene that will provide new insights into the regulated cellular pathways to death. IFITM proteins are recently identified as viral restriction factors that inhibit infection mediated by the influenza A virus (IAV) hemagglutinin (HA) protein. Also they serve as important components of the innate immune system to restrict HIV-1 infection. Catalog#12769-1-AP is a rabbit polyclonal antibody produced with full-length of human IFITM2.

Bemerkenswerte Veröffentlichungen

Verfasser	Pubmed ID	Journal	Anwendung
Florian Wrensch	25256397	Viruses	WB
Wei Zhang	25228491	J Gen Virol	WB, IF
Jinsun Kim	33209202	Anim Cells Syst (Seoul)	WB

Lagerung

Lagerungsbedingungen:

Bei -20°C lagern. Nach dem Versand ein Jahr lang stabil

Lagerungspuffer:

PBS mit 0.02% Natriumazid und 50% Glycerin pH 7.3.

Aliquotieren ist nicht notwendig bei -20°C Lagerung

***** 20ul-Größen enthalten 0.1% BSA**

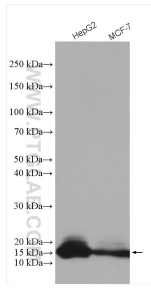
For technical support and original validation data for this product please contact:

T: 1 (888) 4PTGLAB (1-888-478-4522) (toll free in USA), or 1(312) 455-8498 (outside USA)

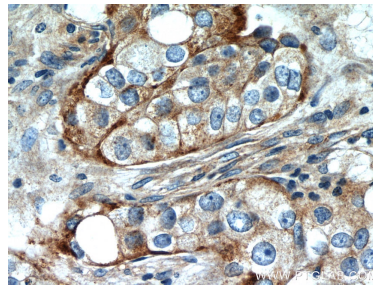
E: proteintech@ptglab.com
W: ptglab.com

This product is exclusively available under Proteintech Group brand and is not available to purchase from any other manufacturer.

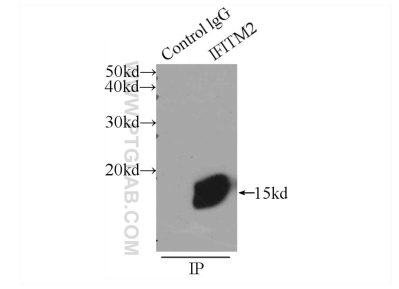
Ausgewählte Validierungsdaten



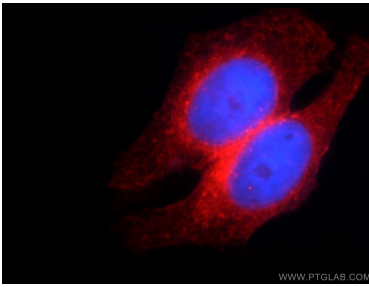
Various lysates were subjected to SDS PAGE followed by western blot with 12769-1-AP (IFITM2 antibody) at dilution of 1:2000 incubated at room temperature for 1.5 hours.



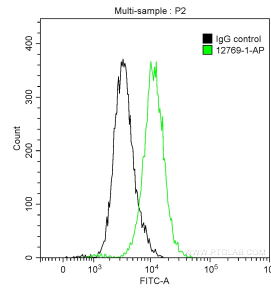
Immunohistochemical analysis of paraffin-embedded human breast cancer slide using 12769-1-AP (IFITM2 Antibody) at dilution of 1:50.



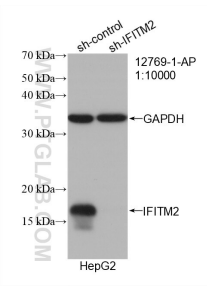
IP Result of anti-IFITM2 (IP:12769-1-AP, 3ug; Detection:12769-1-AP 1:300) with HepG2 cells lysate 1720ug.



Immunofluorescent analysis of HepG2 cells using 12769-1-AP (IFITM2 antibody) at dilution of 1:50 and Rhodamine-Goat anti-Rabbit IgG.



1×10^6 MCF-7 cells were stained with 0.2 ug Anti-Human IFITM2 (12769-1-AP) and Coralite®488-Conjugated AffiniPure Goat Anti-Rabbit IgG(H+L) at dilution 1:1000 (green), and 0.2 ug Control Antibody. Cells were fixed with 90% MeOH.



WB result of IFITM2 antibody (12769-1-AP; 1:10000; incubated at room temperature for 1.5 hours) with sh-Control and sh-IFITM2 transfected HepG2 cells.