

Nur für Forschungszwecke

CP110 Polyklonaler Antikörper

Katalog-Nr.:12780-1-AP

Vorgestelltes Produkt

128 Publikationen



Allgemeine Informationen

Katalog-Nr.: 12780-1-AP	GenBank-Zugangsnummer: BC036654	Reinigungsmethode: Antigen-Affinitätsreinigung
Größe: 150ul , Konzentration: 550 µg/ml von Nanodrop;	GeneID (NCBI): 9738	Empfohlene Verdünnungen: WB 1:2000-1:12000 IP 0.5-4.0 ug für IP und 1:500-1:3000 für WB
Wirt: Kaninchen	Vollständiger Name: CP110 protein	IHC 1:250-1:1000
Isotyp: IgG	Berechnete Masse: 991 aa, 111 kDa	IF 1:50-1:500
Immunogen Katalognummer: AG3489	Beobachtete Masse: 113 kDa	

Anwendungen

Geprüfte Anwendungen:
FC, IF, IHC, IP, WB, ELISA

In Publikationen genannte Anwendungen:
IF, IHC, IP, WB

Getestete Reaktivität:
Human, Hund, Maus, Ratte

Zitierte Arten:
Drosophila, Human, Hund, Maus, Ratte, Zebrafisch, Krallenfrosch (Xenopus)

Hinweis-IHC: Antigenmaskierung mit TE-Puffer pH 9,0 empfohlen. (*) Wahlweise kann die Antigenmaskierung auch mit Citratpuffer pH 6,0 erfolgen.

Positivkontrollen:

WB: HCT 116-Zellen, HEK-293T-Zellen, HeLa-Zellen, Jurkat-Zellen, MOLT-4-Zellen

IP: Jurkat-Zellen,

IHC: humanes Prostatakarzinomgewebe,

IF: A431-Zellen,

Hintergrundinformationen

CP110, also named as CCP110 and KIAA0419, is an 110kDa protein. This gene is different to the gene CEP110 (geneID:11064; CNTRL). CP110 is a centriolar protein that positively regulates centriole duplication while restricting centriole elongation and ciliogenesis. And it acts as a key negative regulator of ciliogenesis in collaboration with CEP97 by capping the mother centriole thereby preventing cilia formation.

Bemerkenswerte Veröffentlichungen

Verfasser	Pubmed ID	Journal	Anwendung
Roberta Sala	32966175	Mol Biol Cell	IF
Chii Shyang Fong	30230954	Mol Biol Cell	
Emmanuelle Steib	32946374	Elife	IF

Lagerung

Lagerungsbedingungen:

Bei -20°C lagern. Nach dem Versand ein Jahr lang stabil

Lagerungspuffer:

PBS mit 0.02% Natriumazid und 50% Glycerin pH 7.3.

Aliquotieren ist nicht notwendig bei -20°C Lagerung

*** 20ul-Größen enthalten 0.1% BSA

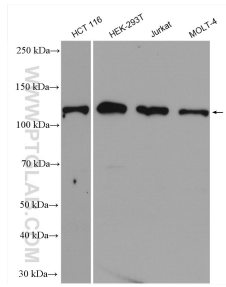
For technical support and original validation data for this product please contact:

T: 1 (888) 4PTGLAB (1-888-478-4522) (toll free in USA), or 1(312) 455-8498 (outside USA)

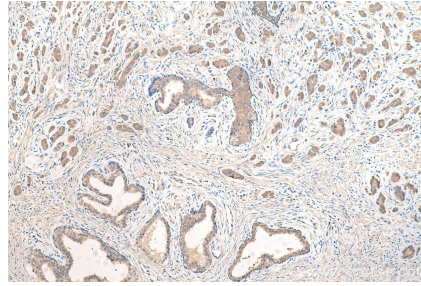
E: proteintech@ptglab.com
W: ptglab.com

This product is exclusively available under Proteintech Group brand and is not available to purchase from any other manufacturer.

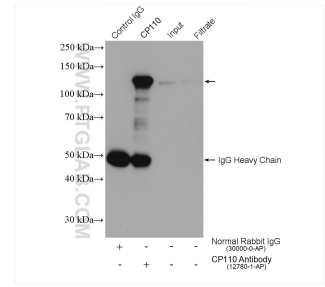
Ausgewählte Validierungsdaten



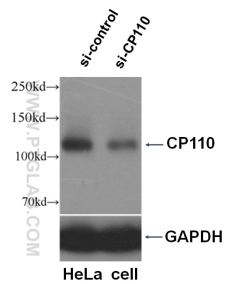
Various lysates were subjected to SDS PAGE followed by western blot with 12780-1-AP (CP110 antibody) at dilution of 1:6000 incubated at room temperature for 1.5 hours.



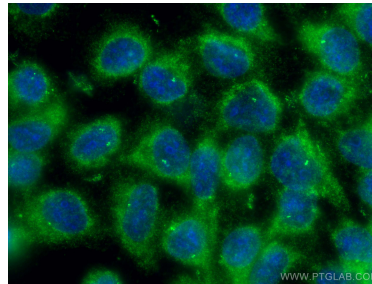
Immunohistochemical analysis of paraffin-embedded human prostate cancer tissue slide using 12780-1-AP (CP110 antibody) at dilution of 1:500 (under 10x lens). Heat mediated antigen retrieval with Tris-EDTA buffer (pH 9.0).



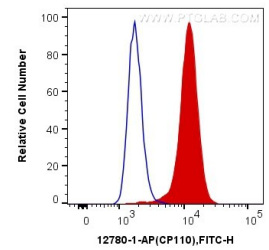
IP result of anti-CP110(IP:12780-1-AP, 4ug; Detection:12780-1-AP 1:1500) with Jurkat cells lysate 2400 ug.



WB result of CP110 antibody (12780-1-AP, 1:500) with si-control and si-CP110 transfected HeLa cells.



Immunofluorescent analysis of (-20°C Methanol) fixed A431 cells using CP110 antibody (12780-1-AP) at dilution of 1:200 and CoraLite®488-Conjugated AffiniPure Goat Anti-Rabbit IgG(H+L).



1X10⁶ HeLa cells were intracellularly stained with 0.2 ug Anti-Human CP110 (12780-1-AP) and CoraLite®488-Conjugated AffiniPure Goat Anti-Rabbit IgG(H+L) at dilution 1:1000 (red), or 0.2 ug Control Antibody. Cells were fixed with 4% PFA and permeabilized with Flow Cytometry Perm Buffer (PF00011-C).