

Nur für Forschungszwecke

human BCL2 Polyklonaler Antikörper



Katalog-Nr.:12789-1-AP

Vorgestelltes Produkt

1992 Publikationen

Allgemeine Informationen

Katalog-Nr.:
12789-1-AP

Größe:
150ul, Konzentration: 500 µg/ml von
Nanodrop;

Wirt:
Kaninchen

Isotyp:
IgG

Immunogen Katalognummer:
AG3508

GenBank-Zugangsnummer:
BC027258

GeneID (NCBI):

Vollständiger Name:
B-cell CLL/lymphoma 2

Berechnete Masse:
26 kDa

Beobachtete Masse:
25-30 kDa

Reinigungsmethode:

Antigen-Affinitätsreinigung

Empfohlene Verdünnungen:

WB 1:2000-1:10000

IP 0.5-4.0 µg für IP und 1:500-1:2000
für WB

IHC 1:50-1:300

Anwendungen

Geprüfte Anwendungen:

FC, IHC, IP, WB, ELISA

In Publikationen genannte Anwendungen:

chIP, CoIP, FC, IF, IHC, IP, WB

Getestete Reaktivität:

Human

Zitierte Arten:

Fisch, Hamster, Hausschwein, Huhn, Human, Hund,
Kaninchen, Rind, Ziege, Hu-Schaf

**Hinweis-IHC: Antigenmaskierung mit TE-
Puffer pH 9,0 empfohlen. (*) Wahlweise
kann die Antigenmaskierung auch mit
Citratpuffer pH 6,0 erfolgen.**

Positivkontrollen:

WB: A431-Zellen, HEK-293-Zellen, HepG2-Zellen, HL-
60-Zellen, Jurkat-Zellen, MCF-7-Zellen, U-251-Zellen,
U2OS-Zellen, U-937-Zellen

IP: HL-60-Zellen, HepG2-Zellen, MCF-7-Zellen

IHC: humanes Tonsillitisgewebe, humanes
Lymphomgewebe

Hintergrundinformationen

BCL2 belongs to the Bcl-2 family. It suppresses apoptosis in a variety of cell systems including factor-dependent lymphohematopoietic and neural cells. BCL2 regulates cell death by controlling the mitochondrial membrane permeability (PMID: 10365962). It appears to function in a feedback loop system with caspases. BCL2 inhibits caspase activity either by preventing the release of cytochrome c from the mitochondria and/or by binding to the apoptosis-activating factor (APAF-1) (PMID: 10444588). This antibody is not suitable for rat and mouse species.

Bemerkenswerte Veröffentlichungen

Verfasser	Pubmed ID	Journal	Anwendung
Xin Shen	36184549	Int Heart J	WB
Yong Zhu	34660260	Front Oncol	WB
Ling Guo	34867437	Front Physiol	WB

Lagerung

Lagerungsbedingungen:

Bei -20°C lagern. Nach dem Versand ein Jahr lang stabil

Lagerungspuffer:

PBS mit 0.02% Natriumazid und 50% Glycerin pH 7.3.

Aliquotieren ist nicht notwendig bei -20°C Lagerung

*** 20ul-Größen enthalten 0.1% BSA

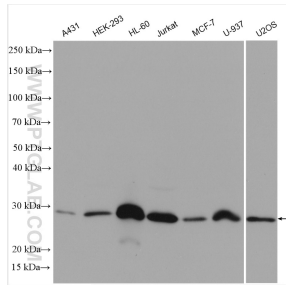
For technical support and original validation data for this product please contact:

T: 1 (888) 4PTGLAB (1-888-478-4522) (toll free
in USA), or 1(312) 455-8498 (outside USA)

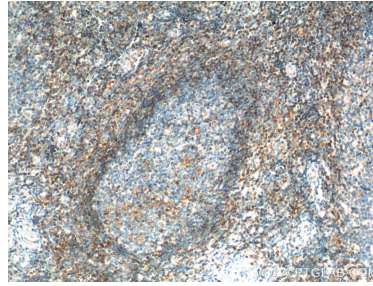
E: proteintech@ptglab.com
W: ptglab.com

This product is exclusively available under Proteintech Group brand and is not available to purchase from any other manufacturer.

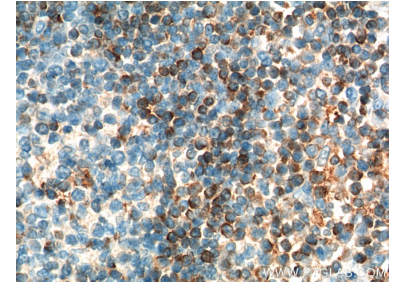
Ausgewählte Validierungsdaten



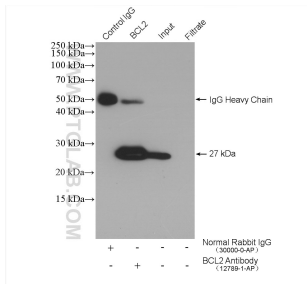
A431 cells were subjected to SDS PAGE followed by western blot with 12789-1-AP (BCL2 antibody) at dilution of 1:9000 incubated at room temperature for 1.5 hours.



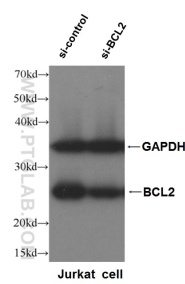
Immunohistochemical analysis of paraffin-embedded human tonsillitis tissue slide using 12789-1-AP (BCL2 Antibody) at dilution of 1:200 (under 10x lens). Heat mediated antigen retrieval with Tris-EDTA buffer (pH 9.0).



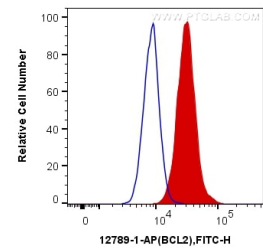
Immunohistochemical analysis of paraffin-embedded human tonsillitis tissue slide using 12789-1-AP (BCL2 Antibody) at dilution of 1:200 (under 40x lens). Heat mediated antigen retrieval with Tris-EDTA buffer (pH 9.0).



IP result of anti-BCL2 (IP:12789-1-AP, 4ug; Detection:12789-1-AP 1:1000) with HL-60 cells lysate 4000 ug.



WB result of BCL2 (12789-1-AP, 1:1000) with si-Control and si-BCL2 transfected Jurkat cells.



1x10⁶ Jurkat cells were intracellularly stained with 0.2 ug Anti-Human BCL2 (12789-1-AP) and CoraLite®488-Conjugated AffiniPure Goat Anti-Rabbit IgG(H+L) at dilution 1:1000 (red), or 0.2 ug Control Antibody. Cells were fixed with 4% PFA and permeabilized with Flow Cytometry Perm Buffer (PF00011-C).