

Nur für Forschungszwecke

Centrin 1 Polyklonaler Antikörper

Katalog-Nr.: 12794-1-AP

30 Publikationen



Allgemeine Informationen

Katalog-Nr.: 12794-1-AP	GenBank-Zugangsnummer: BC029515	Reinigungsmethode: Antigen-Affinitätsreinigung
Größe: 150ul, Konzentration: 850 µg/ml von Nanodrop und 340 µg/ml durch die Bradford-Methode mit BSA als Standard;	GeneID (NCBI): 1068	Empfohlene Verdünnungen: WB 1:500-1:2000 IF 1:50-1:500
Wirt: Kaninchen	Vollständiger Name: centrin, EF-hand protein, 1	
Isotyp: IgG	Berechnete Masse: 172 aa, 20 kDa	
Immunogen Katalognummer: AG3529	Beobachtete Masse: 20 kDa	

Anwendungen

Geprüfte Anwendungen: IF, WB, ELISA	Positivkontrollen: WB : HL-60-Zellen, humanes Herzgewebe
In Publikationen genannte Anwendungen: IF, WB	IF : hTERT-RPE1-Zellen, HeLa-Zellen
Getestete Reaktivität: Human	
Zitierte Arten: Human, Maus, Zebrafisch	

Hintergrundinformationen

EF-hand type Ca²⁺-binding proteins consists of several family members, including Centrin-1, Centrin-2 and Centrin-3. The Centrin proteins are ubiquitously expressed cytoskeletal components that show increased expression during cell differentiation. Centrin-1 plays important roles in the determination of centrosome position and segregation, and in the process of microtubule severing. Centrin-1 is localized to the centrosome of interphase cells, and redistributes to the region of the spindle poles during mitosis, reflecting the dynamic behavior of the centrosome during the cell cycle.

Bemerkenswerte Veröffentlichungen

Verfasser	Pubmed ID	Journal	Anwendung
Ivan Rosa E Silva	34499853	Structure	IF
ShuweiXie	30188792	Mol Biol Cell	IF
Zhenguang Ying	36280838	BMC Biol	IF

Lagerung

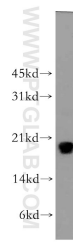
Lagerungsbedingungen:
Bei -20°C lagern. Nach dem Versand ein Jahr lang stabil
Lagerungspuffer:
PBS mit 0.02% Natriumazid und 50% Glycerin pH 7.3.
Aliquotieren ist nicht notwendig bei -20°C Lagerung

*** 20ul-Größen enthalten 0.1% BSA

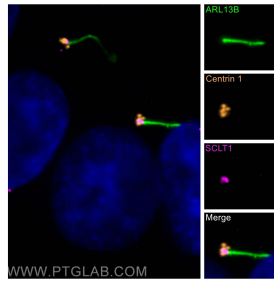
For technical support and original validation data for this product please contact:
T: 1 (888) 4PTGLAB (1-888-478-4522) (toll free in USA), or 1(312) 455-8498 (outside USA)
E: proteintech@ptglab.com
W: ptglab.com

This product is exclusively available under Proteintech Group brand and is not available to purchase from any other manufacturer.

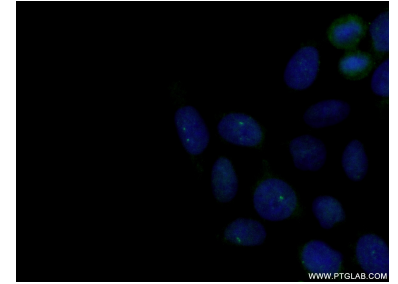
Ausgewählte Validierungsdaten



HL-60 cells were subjected to SDS PAGE followed by western blot with 12794-1-AP (Centrin 1 antibody) at dilution of 1:300 incubated at room temperature for 1.5 hours.



Immunofluorescent analysis of (-20°C Methanol) fixed hTERT-RPE1 cells using Centrin 1 antibody (12794-1-AP) at dilution of 1:50 and Cy3-conjugated Affinipure Goat Anti-Rabbit IgG(H+L), CoraLite®488 ARL13B antibody (CL488-17711, green), SCLT1 antibody (14875-1-AP, Magenta).



Immunofluorescent analysis of (-20°C Ethanol) fixed HeLa cells using 12794-1-AP (Centrin 1 antibody) at dilution of 1:50 and Alexa Fluor 488-conjugated Affinipure Goat Anti-Rabbit IgG(H+L).