

## Allgemeine Informationen

<b>Katalog-Nr.:</b> 12807-1-AP	<b>GenBank-Zugangsnummer:</b> BC036084	<b>Reinigungsmethode:</b> Antigen-Affinitätsreinigung
<b>Größe:</b> 150ul , Konzentration: 300 µg/ml von Nanodrop;	<b>GeneID (NCBI):</b> 23621	<b>Empfohlene Verdünnungen:</b> WB 1:500-1:1000 IP 0.5-4.0 ug für IP und 1:500-1:1000 für WB IHC 1:100-1:400
<b>Wirt:</b> Kaninchen	<b>Vollständiger Name:</b> beta-site APP-cleaving enzyme 1	
<b>Isotyp:</b> IgG	<b>Berechnete Masse:</b> 501 aa, 56 kDa	
<b>Immunogen Katalognummer:</b> AG3559	<b>Beobachtete Masse:</b> 70-75 kDa, 42-56 kDa	

## Anwendungen

## Geprüfte Anwendungen:

IHC, IP, WB, ELISA

## In Publikationen genannte Anwendungen:

IF, IHC, WB

## Getestete Reaktivität:

Human, Maus, Ratte, Zebrafisch

## Zitierte Arten:

Human, Maus, Ratte

**Hinweis-IHC: Antigendemaskierung mit TE-Puffer pH 9,0 empfohlen. (\*) Wahlweise kann die Antigendemaskierung auch mit Citratpuffer pH 6,0 erfolgen.**

## Positivkontrollen:

**WB:** Maushirngewebe, HeLa-Zellen, humanes Hirngewebe, Maus-Pankreasgewebe, PC-12-Zellen, Rattenhirngewebe, Zebrafischgewebe

**IP:** Maushirngewebe,

**IHC:** Maushirngewebe, humanes Pankreasarkzinomgewebe

## Hintergrundinformationen

beta-secretase, encoded by BACE1(beta-site amyloid beta A4 precursor protein-cleavage enzym1) gene, is a neuron-specific membrane-associated protease that participate in the two step proteolytic processing of the APP. Cleaves at the N-terminus of the A-beta peptide sequence, between residues 671 and 672 of APP, leads to the generation and extracellular release of beta-cleaved soluble APP, and a corresponding cell-associated C-terminal fragment which is later released by gamma-secretase. It has a high expression in the brain and pancreas. This protein has 6 isoforms produced by alternative splicing. BACE1 can be detected with different molecular weight: 42-56kD (prozymogen and isoforms), 65-75 (glycosylated forms) and 160kDa (dimer) (PMID:22741101; 21795680).

## Bemerkenswerte Veröffentlichungen

Verfasser	Pubmed ID	Journal	Anwendung
Ya-Shuo Zhao	28874056	Antioxid Redox Signal	WB
Maria Luisa Valle	36241022	Mol Cell Neurosci	WB
Yi-Wen Lin	34884565	Int J Mol Sci	WB, IHC

## Lagerung

## Lagerungsbedingungen:

Bei -20°C lagern. Nach dem Versand ein Jahr lang stabil

## Lagerungspuffer:

PBS mit 0.02% Natriumazid und 50% Glycerin pH 7.3.

Aliquotieren ist nicht notwendig bei -20°C Lagerung

\*\*\* 20ul-Größen enthalten 0.1% BSA

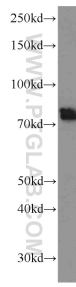
For technical support and original validation data for this product please contact:

T: 1 (888) 4PTGLAB (1-888-478-4522) (toll free in USA), or 1(312) 455-8498 (outside USA)

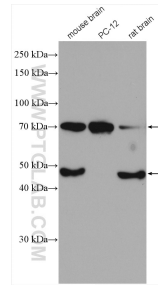
E: [proteintech@ptglab.com](mailto:proteintech@ptglab.com)  
W: [ptglab.com](http://ptglab.com)

**This product is exclusively available under Proteintech Group brand and is not available to purchase from any other manufacturer.**

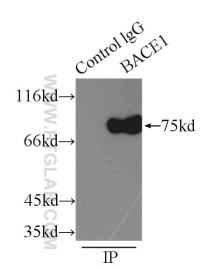
## Ausgewählte Validierungsdaten



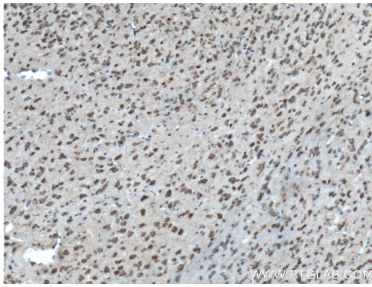
mouse brain tissue were subjected to SDS PAGE followed by western blot with 12807-1-AP (BACE1 antibody) at dilution of 1:500 incubated at room temperature for 1.5 hours.



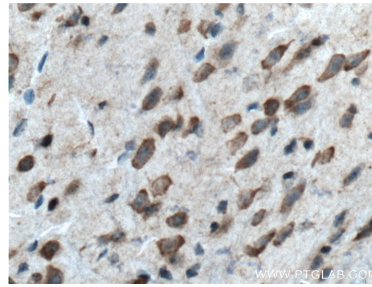
Various lysates were subjected to SDS PAGE followed by western blot with 12807-1-AP (BACE1 antibody) at dilution of 1:600 incubated at room temperature for 1.5 hours.



IP Result of anti-BACE1 (IP:12807-1-AP, 3ug; Detection:12807-1-AP 1:500) with mouse brain tissue lysate 5000ug.



Immunohistochemical analysis of paraffin-embedded mouse brain tissue slide using 12807-1-AP (BACE1 Antibody) at dilution of 1:200 (under 10x lens). Heat mediated antigen retrieval with Tris-EDTA buffer (pH 9.0).



Immunohistochemical analysis of paraffin-embedded mouse brain tissue slide using 12807-1-AP (BACE1 Antibody) at dilution of 1:200 (under 40x lens). Heat mediated antigen retrieval with Tris-EDTA buffer (pH 9.0).