

## Allgemeine Informationen

**Katalog-Nr.:**  
12822-1-AP

**Größe:**  
150ul , Konzentration: 600 µg/ml von  
Nanodrop und 300 µg/ml durch die  
Bradford-Methode mit BSA als  
Standard;

**Wirt:**  
Kaninchen

**Isotyp:**  
IgG

**Immunogen Katalognummer:**  
AG3513

**GenBank-Zugangsnummer:**  
BC036187

**GeneID (NCBI):**  
10250

**Vollständiger Name:**  
serine/arginine repetitive matrix 1

**Berechnete Masse:**  
904 aa, 102 kDa

**Beobachtete Masse:**  
120-160 kDa

**Reinigungsmethode:**

Antigen-Affinitätsreinigung

**Empfohlene Verdünnungen:**

WB 1:500-1:1000  
IP 0.5-4.0 ug für IP und 1:200-1:1000  
für WB

## Anwendungen

**Geprüfte Anwendungen:**

IP, WB, ELISA

**In Publikationen genannte Anwendungen:**

CoIP, WB

**Getestete Reaktivität:**

Human, Maus, Ratte

**Zitierte Arten:**

Human

**Positivkontrollen:**

WB : Mauslebergewebe, HeLa-Zellen, Jurkat-Zellen

IP : HeLa-Zellen,

## Hintergrundinformationen

SRRM1, also named as SRM160 and POP101, contains one PWI domain and belongs to the splicing factor SR family. As part of pre- and post-splicing multiprotein mRNP complexes, SRRM1 is involved in numerous pre-mRNA processing events. It promotes constitutive and exonic splicing enhancer (ESE)-dependent splicing activation by bridging together sequence-specific (SR family proteins, SFRS4, SFRS5 and TRA2B/SFRS10) and basal snRNP (SNRP70 and SNRPA1) factors of the spliceosome. SRRM1 stimulates mRNA 3'-end cleavage independently of the formation of an exon junction complex. It binds both pre-mRNA and spliced mRNA 20-25 nt upstream of exon-exon junctions. SRRM1 binds RNA and DNA with low sequence specificity and has similar preference for either double- or single-stranded nucleic acid substrates. SRRM1, a protein of high molecular weight(120-160kd), has a heavy glycosylation level and is normally highly phosphorylated. This antibody is a rabbit polyclonal antibody raised against residues near the N terminus of human SRRM1.

## Bemerkenswerte Veröffentlichungen

| Verfasser                | Pubmed ID | Journal                           | Anwendung |
|--------------------------|-----------|-----------------------------------|-----------|
| Xiaoyan Song             | 36270072  | Tissue Cell                       | CoIP      |
| Taiki Baba               | 33872670  | Biochim Biophys Acta Mol Cell Res | WB        |
| Wojcechowskyj Jason A JA | 23684312  | Cell Host Microbe                 | WB        |

## Lagerung

**Lagerungsbedingungen:**

Bei -20°C lagern. Nach dem Versand ein Jahr lang stabil

**Lagerungspuffer:**

PBS mit 0.02% Natriumazid und 50% Glycerin pH 7.3.

Aliquotieren ist nicht notwendig bei -20°C Lagerung

**\*\*\* 20ul-Größen enthalten 0.1% BSA**

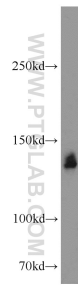
For technical support and original validation data for this product please contact:

T: 1 (888) 4PTGLAB (1-888-478-4522) (toll free  
in USA), or 1(312) 455-8498 (outside USA)

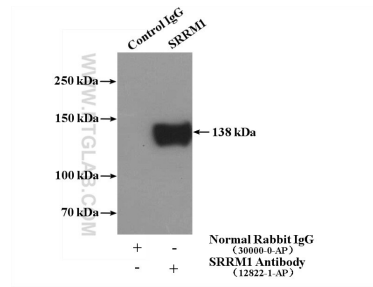
E: [proteintech@ptglab.com](mailto:proteintech@ptglab.com)  
W: [ptglab.com](http://ptglab.com)

**This product is exclusively available under Proteintech Group brand and is not available to purchase from any other manufacturer.**

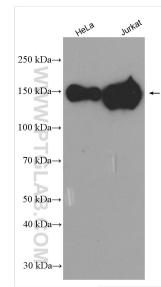
## Ausgewählte Validierungsdaten



mouse liver tissue were subjected to SDS PAGE followed by western blot with 12822-1-AP (SRRM1 antibody) at dilution of 1:500 incubated at room temperature for 1.5 hours.



IP Result of anti-SRRM1 (IP:12822-1-AP, 4ug; Detection:12822-1-AP 1:300) with HeLa cells lysate 3200ug.



Various lysates were subjected to SDS PAGE followed by western blot with 12822-1-AP (SRRM1 antibody) at dilution of 1:2000 incubated at room temperature for 1.5 hours.