

Nur für Forschungszwecke

# Alpha E-Catenin Polyklonaler Antikörper



Katalog-Nr.:12831-1-AP

14 Publikationen

## Allgemeine Informationen

Katalog-Nr.:  
12831-1-AP

Größe:  
150ul, Konzentration: 700 µg/ml von  
Nanodrop und 413 µg/ml durch die  
Bradford-Methode mit BSA als  
Standard;

Wirt:  
Kaninchen

Isotyp:  
IgG

Immunogen Katalognummer:  
AG3565

GenBank-Zugangsnummer:  
BC031262

GeneID (NCBI):  
1495

Vollständiger Name:  
catenin (cadherin-associated protein),  
alpha 1, 102kDa

Berechnete Masse:  
906 aa, 100 kDa

Beobachtete Masse:  
100 kDa

Reinigungsmethode:

Antigen-Affinitätsreinigung

Empfohlene Verdünnungen:

WB 1:1000-1:4000  
IP 0.5-4.0 µg für IP und 1:500-1:1000  
für WB  
IHC 1:20-1:200  
IF 1:10-1:100

## Anwendungen

Geprüfte Anwendungen:

FC, IF, IHC, IP, WB, ELISA

In Publikationen genannte Anwendungen:

IF, WB

Getestete Reaktivität:

Human, Maus, Ratte

Zitierte Arten:

Human, Maus, Ratte

**Hinweis-IHC: Antigendemaskierung mit TE-Puffer pH 9,0 empfohlen. (\*) Wahlweise kann die Antigendemaskierung auch mit Citratpuffer pH 6,0 erfolgen.**

Positivkontrollen:

WB : Maus-Uterusgewebe,

IP : Maushirngewebe,

IHC : humanes Magengewebe, humanes Kolongewebe,  
humanes Pankreaskarzinomgewebe

IF : A431-Zellen,

## Hintergrundinformationen

Alpha catenin is an essential component of adherens junctions that connects E-cadherin-β-catenin complexes with the actin cytoskeleton. It also recruits a range of other important proteins to developing intercellular junctions. Three alpha catenins exist in human: alpha-E-catenin, alpha-N-catenin, and alpha-T-catenin, which share substantial amino-acid sequence similarity but have distinct tissue distribution. alpha-E-catenin is ubiquitously expressed, alpha-N-catenin is restricted to neuronal tissue, and alpha-T-catenin is primarily expressed in heart tissue. Reduced levels of alpha-E-catenin protein seem to be characteristic of many different human cancers, including malignant tumours of the breast, colon, stomach, oesophagus, bladder and liver. In addition, the loss of alpha-E-catenin often correlates with the degree of tumour differentiation and metastasis.

## Bemerkenswerte Veröffentlichungen

Verfasser	Pubmed ID	Journal	Anwendung
Quan Zhou	31659258	Oncogene	WB
Xiaoli Ji	34650058	Cell Death Discov	WB
Yibin Zhou	30542490	Exp Ther Med	WB

## Lagerung

Lagerungsbedingungen:

Bei -20°C lagern. Nach dem Versand ein Jahr lang stabil

Lagerungspuffer:

PBS mit 0.02% Natriumazid und 50% Glycerin pH 7.3.

Aliquotieren ist nicht notwendig bei -20°C Lagerung

\*\*\* 20ul-Größen enthalten 0.1% BSA

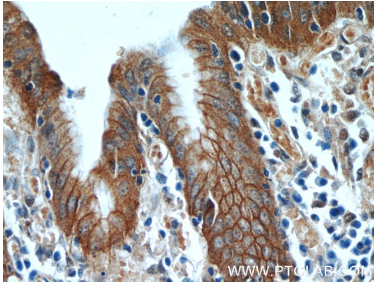
For technical support and original validation data for this product please contact:

T: 1 (888) 4PTGLAB (1-888-478-4522) (toll free  
in USA), or 1(312) 455-8498 (outside USA)

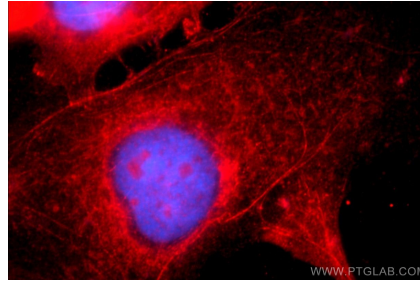
E: proteintech@ptglab.com  
W: ptglab.com

This product is exclusively available under Proteintech Group brand and is not available to purchase from any other manufacturer.

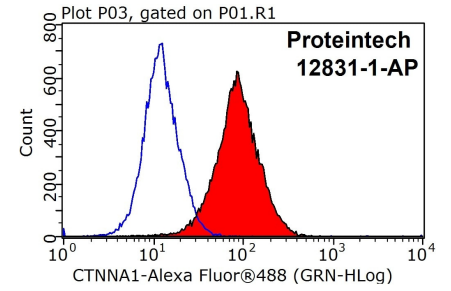
## Ausgewählte Validierungsdaten



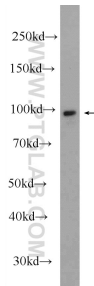
Immunohistochemical analysis of paraffin-embedded human stomach tissue slide using 12831-1-AP (Alpha E catenin antibody at dilution of 1:50 (under 40x lens).



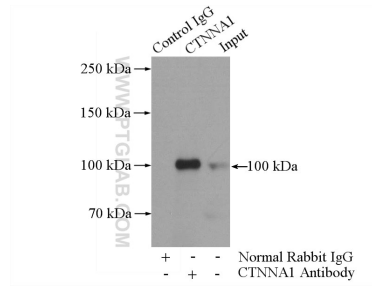
Immunofluorescent analysis of A431 cells using 12831-1-AP (Alpha E catenin antibody) at dilution of 1:25 and Rhodamine-Goat anti-Rabbit IgG.



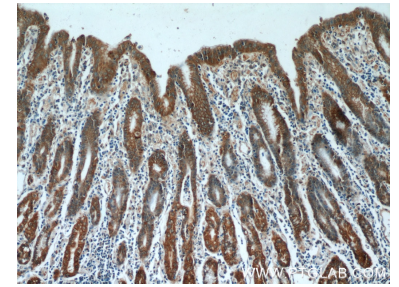
1X10<sup>6</sup> MCF-7 cells were stained with 0.2ug Alpha E catenin antibody (12831-1-AP, red) and control antibody (blue). Fixed with 90% MeOH blocked with 3% BSA (30 min). Alexa Fluor 488-conjugated AffiniPure Goat Anti-Rabbit IgG(H+L) with dilution 1:1000.



mouse uterus tissue were subjected to SDS PAGE followed by western blot with 12831-1-AP (Alpha E catenin antibody at dilution of 1:2000 incubated at room temperature for 1.5 hours.



IP Result of anti-Alpha E catenin (IP:12831-1-AP, 4ug; Detection:12831-1-AP 1:700) with mouse brain tissue lysate 4000ug.



Immunohistochemical analysis of paraffin-embedded human stomach tissue slide using 12831-1-AP (Alpha E catenin antibody at dilution of 1:50 (under 10x lens).