

Nur für Forschungszwecke

# CENPH Polyklonaler Antikörper

Katalog-Nr.:12841-1-AP



## Allgemeine Informationen

**Katalog-Nr.:**  
12841-1-AP

**Größe:**

150ul, Konzentration: 1000 µg/ml von 64946

Nanodrop und 453 µg/ml durch die Bradford-Methode mit BSA als Standard;

**Wirt:**

Kaninchen

**Isotyp:**

IgG

**Immunogen Katalognummer:**

AG3836

**GenBank-Zugangsnummer:**

BC015355

**GeneID (NCBI):**

64946

**Vollständiger Name:**

centromere protein H

**Berechnete Masse:**

247 aa, 28 kDa

**Beobachtete Masse:**

28 kDa

**Reinigungsmethode:**

Antigen-Affinitätsreinigung

**Empfohlene Verdünnungen:**

WB 1:1000-1:8000

## Anwendungen

**Geprüfte Anwendungen:**

WB, ELISA

**Getestete Reaktivität:**

Human, Maus

**Positivkontrollen:**

WB: A549-Zellen, HeLa-Zellen, NIH/3T3-Zellen

## Hintergrundinformationen

Centromere protein H (CENPH) is a component of the active centromere complex that associates with centromeric DNA and binds spindle microtubules to the chromosomes, which is required for chromosome congression and efficiently align the chromosomes on a metaphase plate. CENPH plays a key role in assembly of kinetochore proteins, mitotic progression and chromosome segregation that may cause misaligned chromosomes and multipolar spindles. Besides, CENPH may be associated with the modulation of the cell cycle through an interaction with CENPC. It has been shown that the expression of CENPH is related to clinical application including colorectal cancer, gastric cancer, renal cell carcinoma, hepatocellular carcinoma and other poor prognosis in various solid tumors. (PMID: 26378239, 27993978, 28819418)

## Lagerung

**Lagerungsbedingungen:**

Bei -20°C lagern. Nach dem Versand ein Jahr lang stabil

**Lagerungspuffer:**

PBS mit 0.02% Natriumazid und 50% Glycerin pH 7.3.

Aliquotieren ist nicht notwendig bei -20°C Lagerung

**\*\*\* 20ul-Größen enthalten 0.1% BSA**

For technical support and original validation data for this product please contact:

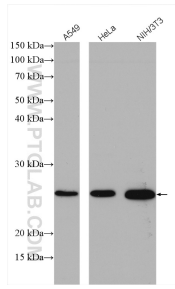
T: 1 (888) 4PTGLAB (1-888-478-4522) (toll free in USA), or 1(312) 455-8498 (outside USA)

E: [proteintech@ptglab.com](mailto:proteintech@ptglab.com)

W: [ptglab.com](http://ptglab.com)

**This product is exclusively available under Proteintech Group brand and is not available to purchase from any other manufacturer.**

## Ausgewählte Validierungsdaten



Various lysates were subjected to SDS PAGE followed by western blot with 12841-1-AP (CENPH antibody) at dilution of 1:5000 incubated at room temperature for 1.5 hours.