

Nur für Forschungszwecke

CCL3L1 Polyklonaler Antikörper

Katalog-Nr.:12859-1-AP



Allgemeine Informationen

Katalog-Nr.: 12859-1-AP	GenBank-Zugangsnummer: BC027888	Reinigungsmethode: Antigen-Affinitätsreinigung
Größe: 150ul , Konzentration: 133 µg/ml durch die Bradford-Methode mit BSA als Standard;	GeneID (NCBI): 6349	Empfohlene Verdünnungen: WB 1:500-1:2000
Wirt: Kaninchen	Vollständiger Name: chemokine (C-C motif) ligand 3-like 1	
Isotyp: IgG	Berechnete Masse: 10 kDa	
Immunogen Katalognummer: AG3891	Beobachtete Masse: 10 kDa	

Anwendungen

Geprüfte Anwendungen: WB, ELISA	Positivkontrollen: WB : PMA, LPS and Brefeldin A treated THP-1 cells,
Getestete Reaktivität: Human	

Hintergrundinformationen

CCL3L1 is one of several cytokine genes that are clustered on the q-arm of chromosome 17. Cytokines are a family of secreted proteins that function in inflammatory and immunoregulatory processes. The protein encoded by this gene binds to several chemokine receptors, including chemokine binding protein 2 and chemokine (C-C motif) receptor 5 (CCR5). CCR5 is a co-receptor for HIV, and binding of this protein to CCR5 inhibits HIV entry. The copy number of this gene varies among individuals, where most individuals have one to six copies, and a minority of individuals have zero or more than six copies. There are conflicting reports about copy number variation of this gene and its correlation to disease susceptibility.

Lagerung

Lagerungsbedingungen:
Bei -20°C lagern. Nach dem Versand ein Jahr lang stabil
Lagerungspuffer:
PBS mit 0.02% Natriumazid und 50% Glycerin pH 7.3.
Aliquotieren ist nicht notwendig bei -20°C Lagerung

*** 20ul-Größen enthalten 0.1% BSA

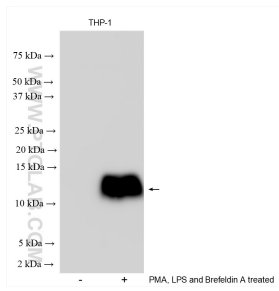
For technical support and original validation data for this product please contact:

T: 1 (888) 4PTGLAB (1-888-478-4522) (toll free
in USA), or 1(312) 455-8498 (outside USA)

E: proteintech@ptglab.com
W: ptglab.com

This product is exclusively available under Proteintech Group brand and is not available to purchase from any other manufacturer.

Ausgewählte Validierungsdaten



PMA, LPS and Brefeldin A treated THP-1 cells were subjected to SDS PAGE followed by western blot with 12859-1-AP (CCL3L1 antibody) at dilution of 1:1000 incubated at room temperature for 1.5 hours.