

Nur für Forschungszwecke

TGM1 Polyklonaler Antikörper

Katalog-Nr.:12912-3-AP

17 Publikationen



Allgemeine Informationen

Katalog-Nr.:

12912-3-AP

Größe:

150ul, Konzentration: 500 µg/ml von Nanodrop;

Wirt:

Kaninchen

Isotyp:

IgG

Immunogen Katalognummer:

AG3905

GenBank-Zugangsnummer:

BC034699

GeneID (NCBI):

7051

Vollständiger Name:

transglutaminase 1 (K polypeptide epidermal type I, protein-glutamine-gamma-glutamyltransferase)

Berechnete Masse:

817 aa, 90 kDa

Beobachtete Masse:

90 kDa

Reinigungsmethode:

Antigen-Affinitätsreinigung

Empfohlene Verdünnungen:

WB 1:1000-1:8000

IP 0.5-4.0 µg für IP und 1:500-1:2000

für WB

IHC 1:50-1:600

Anwendungen

Geprüfte Anwendungen:

IHC, IP, WB, ELISA

In Publikationen genannte Anwendungen:

IF, IHC, WB

Getestete Reaktivität:

Human, Maus, Ratte

Zitierte Arten:

Human, Maus, Ratte

Hinweis-IHC: Antigendemaskierung mit TE-Puffer pH 9,0 empfohlen. (*) Wahlweise kann die Antigendemaskierung auch mit Citratpuffer pH 6,0 erfolgen.

Positivkontrollen:

WB : human saliva, Mausnierengewebe

IP : Mausnierengewebe,

IHC : humanes Zervixgewebe, humanes Hautgewebe, humanes Zervixkarzinomgewebe

Hintergrundinformationen

Transglutaminase 1 is an epidermal enzyme that is expressed during the terminal differentiation of keratinized squamous epithelium to form cornified cell envelopes in differentiated keratinocytes. Mutation of TGM1 has been linked to various epidermal diseases. This antibody recognizes the endogenous 90 kDa TGM1 proteins.

Bemerkenswerte Veröffentlichungen

Verfasser	Pubmed ID	Journal	Anwendung
Laurence Cantin-Warren	30223550	J Funct Biomater	IF
Jie Zhang	34646892	Burns Trauma	WB,IHC
Risa Ikutama	36455652	J Invest Dermatol	WB

Lagerung

Lagerungsbedingungen:

Bei -20°C lagern. Nach dem Versand ein Jahr lang stabil

Lagerungspuffer:

PBS mit 0.02% Natriumazid und 50% Glycerin pH 7.3.

Aliquotieren ist nicht notwendig bei -20°C Lagerung

*** 20ul-Größen enthalten 0.1% BSA

For technical support and original validation data for this product please contact:

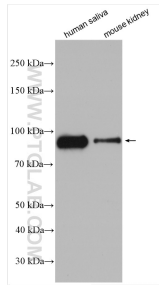
T: 1 (888) 4PTGLAB (1-888-478-4522) (toll free in USA), or 1(312) 455-8498 (outside USA)

E: proteintech@ptglab.com

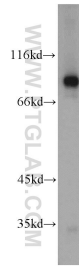
W: ptglab.com

This product is exclusively available under Proteintech Group brand and is not available to purchase from any other manufacturer.

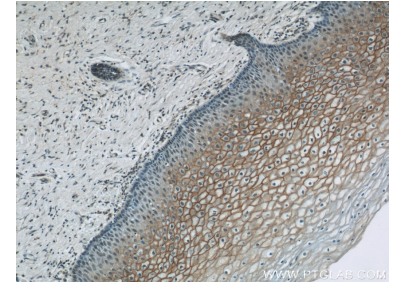
Ausgewählte Validierungsdaten



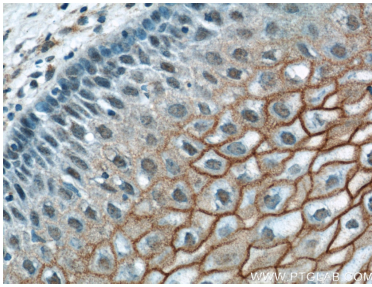
Various lysates were subjected to SDS PAGE followed by western blot with 12912-3-AP (TGM1 antibody) at dilution of 1:4000 incubated at room temperature for 1.5 hours.



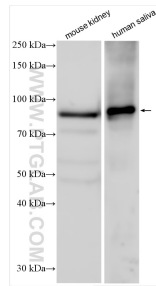
mouse kidney tissue were subjected to SDS PAGE followed by western blot with 12912-3-AP (TGM1 antibody) at dilution of 1:500 incubated at room temperature for 1.5 hours.



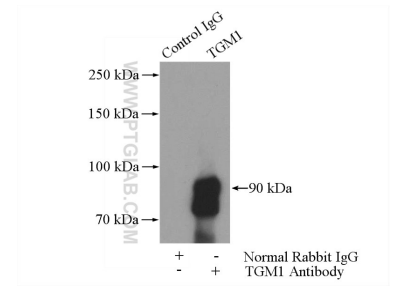
Immunohistochemical analysis of paraffin-embedded human cervix using 12912-3-AP (TGM1 antibody) at dilution of 1:200 (under 10x lens).



Immunohistochemical analysis of paraffin-embedded human cervix using 12912-3-AP (TGM1 antibody) at dilution of 1:200 (under 40x lens).



Various lysates were subjected to SDS PAGE followed by western blot with 12912-3-AP (TGM1 antibody) at dilution of 1:4000 incubated at room temperature for 1.5 hours.



IP Result of anti-TGM1 (IP:12912-3-AP, 4ug; Detection:12912-3-AP 1:1000) with mouse kidney tissue lysate 4000ug.