

Nur für Forschungszwecke

DRP1 (C-terminal) Polyklonaler Antikörper



Katalog-Nr.:12957-1-AP

Vorgestelltes Produkt

142 Publikationen

Allgemeine Informationen

Katalog-Nr.: 12957-1-AP	GenBank-Zugangsnummer: BC024590	Reinigungsmethode: Antigen-Affinitätsreinigung
Größe: 150ul , Konzentration: 900 µg/ml von Nanodrop;	GeneID (NCBI): 10059	Empfohlene Verdünnungen: WB 1:2000-1:10000 IP 0.5-4.0 ug für IP und 1:500-1:2000 für WB
Wirt: Kaninchen	Vollständiger Name: dynamin 1-like	IHC 1:50-1:500 IF 1:50-1:500
Isotyp: IgG	Berechnete Masse: 710 aa, 79 kDa	
Immunogen Katalognummer: AG3644	Beobachtete Masse: 75-80 kDa	

Anwendungen

Geprüfte Anwendungen:
FC, IF, IHC, IP, WB, ELISA

In Publikationen genannte Anwendungen:
CoIP, IF, IHC, IP, WB

Getestete Reaktivität:
Human, Maus, Ratte

Zitierte Arten:
Affe, Hamster, Huhn, Human, Maus, Ratte, Rind

Hinweis-IHC: Antigenmaskierung mit TE-Puffer pH 9,0 empfohlen. (*) Wahlweise kann die Antigenmaskierung auch mit Citratpuffer pH 6,0 erfolgen.

Positivkontrollen:

WB: Maushirngewebe, A549-Zellen, DU 145-Zellen, HCT 116-Zellen, HeLa-Zellen, HepG2-Zellen, NIH/3T3-Zellen, Rattenhirngewebe

IP: Maushirngewebe,

IHC: Maus-Cerebellum-Gewebe,

IF: HeLa-Zellen,

Hintergrundinformationen

DNM1L(Dynamin-1-like protein) , also known as dynamin-related protein 1 (DRP1), belongs to the dynamin family of large GTPases that mediate membrane remodeling during a variety of cellular processes. DNM1L has an important role in the division of growing mitochondria and peroxisomes and also mediates outer mitochondrial membrane fission in mammalian cells. DNM1L is ubiquitously expressed with abundant expression in skeletal muscle, heart, kidney and brain.Variable isoforms of DNM1L have been reported in a tissue-specific manner due to the alternative splicing.

Bemerkenswerte Veröffentlichungen

Verfasser	Pubmed ID	Journal	Anwendung
Wenliang Zhang	34580406	Sci Rep	WB
Xinyao Tian	36163170	Cell Death Dis	WB
Jinghua Du	29158819	Theranostics	WB

Lagerung

Lagerungsbedingungen:

Bei -20°C lagern. Nach dem Versand ein Jahr lang stabil

Lagerungspuffer:

PBS mit 0.02% Natriumazid und 50% Glycerin pH 7.3.

Aliquotieren ist nicht notwendig bei -20°C Lagerung

*** 20ul-Größen enthalten 0.1% BSA

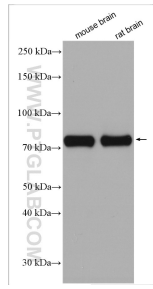
For technical support and original validation data for this product please contact:

T: 1 (888) 4PTGLAB (1-888-478-4522) (toll free in USA), or 1(312) 455-8498 (outside USA)

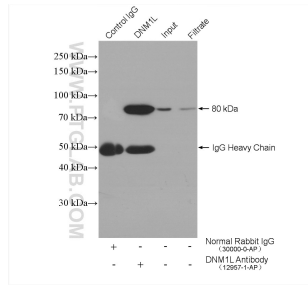
E: proteintech@ptglab.com
W: ptglab.com

This product is exclusively available under Proteintech Group brand and is not available to purchase from any other manufacturer.

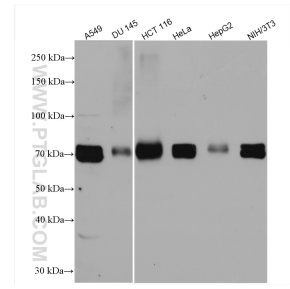
Ausgewählte Validierungsdaten



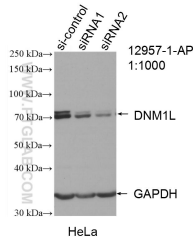
Various lysates were subjected to SDS PAGE followed by western blot with 12957-1-AP (DRP1 (C-terminal) antibody) at dilution of 1:5000 incubated at room temperature for 1.5 hours.



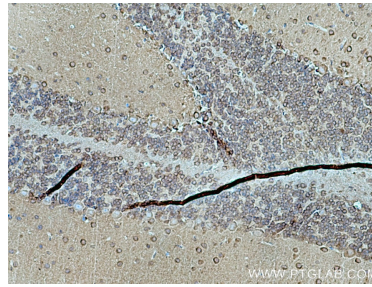
IP result of anti-DRP1 (C-terminal)(IP:12957-1-AP, 4ug; Detection:12957-1-AP 1:1000) with mouse brain tissue lysate 2400 ug.



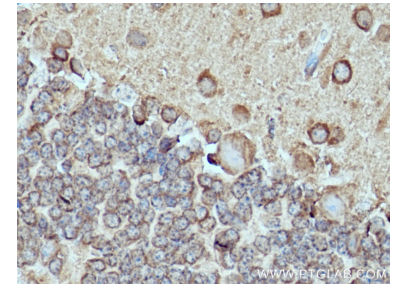
Various lysates were subjected to SDS PAGE followed by western blot with 12957-1-AP (DRP1 (C-terminal) antibody) at dilution of 1:5000 incubated at room temperature for 1.5 hours.



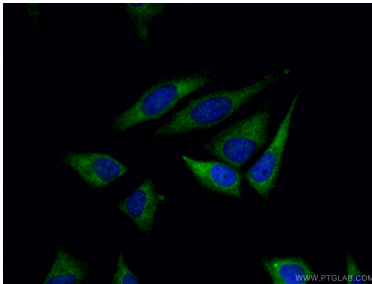
WB result of DRP1 (C-terminal) antibody (12957-1-AP; 1:1000; incubated at room temperature for 1.5 hours) with sh-Control and sh-DRP1 (C-terminal) transfected HeLa cells.



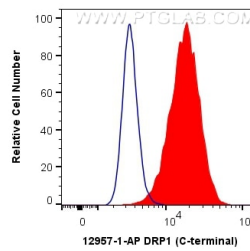
Immunohistochemical analysis of paraffin-embedded mouse cerebellum tissue slide using 12957-1-AP (DRP1 (C-terminal) antibody) at dilution of 1:200 (under 10x lens). Heat mediated antigen retrieval with Tris-EDTA buffer (pH 9.0).



Immunohistochemical analysis of paraffin-embedded mouse cerebellum tissue slide using 12957-1-AP (DRP1 (C-terminal) antibody) at dilution of 1:200 (under 40x lens). Heat mediated antigen retrieval with Tris-EDTA buffer (pH 9.0).



Immunofluorescent analysis of (-20°C Ethanol) fixed HeLa cells using 12957-1-AP (DRP1 (C-terminal) antibody) at dilution of 1:50 and CoraLite488-Conjugated AffiniPure Goat Anti-Rabbit IgG(H+L).



1X10⁶ HeLa cells were intracellularly stained with 0.4 ug Anti-Human DRP1 (C-terminal) (12957-1-AP) and CoraLite®488-Conjugated AffiniPure Goat Anti-Rabbit IgG(H+L) at dilution 1:1000 (red), or 0.4 ug Control Antibody. Cells were fixed with 4% PFA and permeabilized with Flow Cytometry Perm Buffer (PF0011-C).