

Nur für Forschungszwecke

RASGRF1 Polyklonaler Antikörper

Katalog-Nr.:12958-1-AP

6 Publikationen



Allgemeine Informationen

Katalog-Nr.:
12958-1-AP

Größe:
150ul , Konzentration: 220 µg/ml von
Nanodrop und 213 µg/ml durch die
Bradford-Methode mit BSA als
Standard;

Wirt:
Kaninchen

Isotyp:
IgG

Immunogen Katalognummer:
AG4072

GenBank-Zugangsnummer:
BC040275

GeneID (NCBI):
5923

Vollständiger Name:
Ras protein-specific guanine
nucleotide-releasing factor 1

Berechnete Masse:
134 kDa

Beobachtete Masse:
130-140 kDa

Reinigungsmethode:

Antigen-Affinitätsreinigung

Empfohlene Verdünnungen:

WB 1:500-1:1000
IP 0.5-4.0 ug für IP und 1:500-1:1000
für WB

Anwendungen

Geprüfte Anwendungen:

IP, WB,ELISA

In Publikationen genannte Anwendungen:

IHC, WB

Getestete Reaktivität:

Human, Maus, Ratte

Zitierte Arten:

Human, Maus, Ratte

Positivkontrollen:

WB : humanes Hirngewebe, Rattenhirngewebe

IP : Rattenhirngewebe,

Hintergrundinformationen

RasGRF1, a member of calmodulin-activated guanine-nucleotide exchange factors (GEFs), highly expressed at the synaptic junctions of the central nervous system (CNS). It is similar to the *Saccharomyces cerevisiae* CDC25. RASGRF1 serves as an in vivo activator for H-RAS and members of the R-RAS and RAC subfamilies. Several studies have shown that RasGRF1 also binds to microtubules and participate in the regulation of neurite outgrowth. RasGRF1 has been implicated in neuronal excitability. The studies of the similar gene in mouse suggested that the Ras-GEF activity of this protein in brain can be activated by Ca²⁺ influx, muscarinic receptors, and G protein beta-gamma subunit. Mouse studies also indicated that the Ras-GEF signaling pathway mediated by this protein may be important for long-term memory.

Bemerkenswerte Veröffentlichungen

Verfasser	Pubmed ID	Journal	Anwendung
Bo Teng	28335497	Molecules	WB
Wei Liao	24597981	Leuk Lymphoma	
Wei Liao	27458535	Cancer Biol Med	WB

Lagerung

Lagerungsbedingungen:

Bei -20°C lagern. Nach dem Versand ein Jahr lang stabil

Lagerungspuffer:

PBS mit 0.02% Natriumazid und 50% Glycerin pH 7.3.

Aliquotieren ist nicht notwendig bei -20°C Lagerung

***** 20ul-Größen enthalten 0.1% BSA**

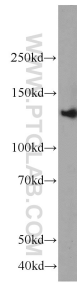
For technical support and original validation data for this product please contact:

T: 1 (888) 4PTGLAB (1-888-478-4522) (toll free
in USA), or 1(312) 455-8498 (outside USA)

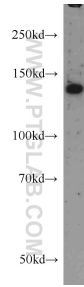
E: proteintech@ptglab.com
W: ptglab.com

This product is exclusively available under Proteintech Group brand and is not available to purchase from any other manufacturer.

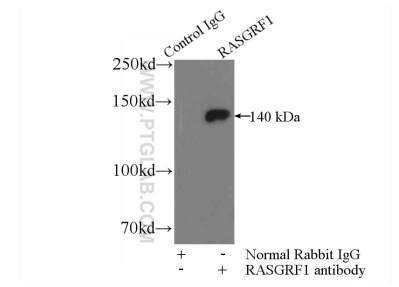
Ausgewählte Validierungsdaten



rat brain tissue were subjected to SDS PAGE followed by western blot with 12958-1-AP (RASGRF1 antibody) at dilution of 1:600 incubated at room temperature for 1.5 hours.



human brain tissue were subjected to SDS PAGE followed by western blot with 12958-1-AP (RASGRF1 antibody) at dilution of 1:600 incubated at room temperature for 1.5 hours.



IP Result of anti-RASGRF1 (IP:12958-1-AP, 4ug; Detection:12958-1-AP 1:500) with rat brain tissue lysate 4000ug.