

Allgemeine Informationen

Katalog-Nr.: 12982-1-AP	GenBank-Zugangsnummer: BC028719	Reinigungsmethode: Antigen-Affinitätsreinigung
Größe: 150ul , Konzentration: 260 µg/ml von Nanodrop und 247 µg/ml durch die Bradford-Methode mit BSA als Standard;	GeneID (NCBI): 7179	Empfohlene Verdünnungen: WB 1:500-1:2000 IHC 1:20-1:200 IF 1:10-1:100
Wirt: Kaninchen	Vollständiger Name: transmembrane phosphatase with tensin homology	
Isotyp: IgG	Berechnete Masse: 62 kDa, 64 kDa	
Immunogen Katalognummer: AG3606	Beobachtete Masse: 62 kDa, 64 kDa	

Anwendungen

Geprüfte Anwendungen:

IF, IHC, WB, ELISA

Getestete Reaktivität:

Human

Hinweis-IHC: Antigendemaskierung mit TE-Puffer pH 9,0 empfohlen. (*) Wahlweise kann die Antigendemaskierung auch mit Citratpuffer pH 6,0 erfolgen.

Positivkontrollen:

WB : HepG2-Zellen, BxPC-3-Zellen, HEK-293-Zellen, humanes Hodengewebe, Maus Hodengewebe

IHC : humanes Hodengewebe,

IF : BxPC-3-Zellen,

Hintergrundinformationen

TPTE(Transmembrane phosphatase with tensin homology) is also named as CT44, BJ-HCC-5 and belongs to the non receptor class of the protein-tyrosine phosphatase family. The gene encodes a predicted polypeptide of 551 amino acids with at least 2 potential transmembrane domains and a tyrosine phosphatase motif. TPTE may be involved in the signal transduction pathways of the endocrine or spermatogenic function of the testis(PMID:10598804). It is putatively involved in linking the cell membrane to cytoskeleton. This protein is very similar in sequence to PTEN through the phosphatase and C2 domains, but lacks a PDZ binding motif and an extensively phosphorylated C-terminal tail(PMID:17240336). It has 4 isoforms produced by alternative splicing.

Lagerung

Lagerungsbedingungen:

Bei -20°C lagern. Nach dem Versand ein Jahr lang stabil

Lagerungspuffer:

PBS mit 0.02% Natriumazid und 50% Glycerin pH 7.3.

Aliquotieren ist nicht notwendig bei -20°C Lagerung

*** 20ul-Größen enthalten 0.1% BSA

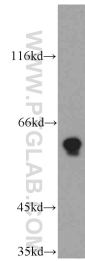
For technical support and original validation data for this product please contact:

T: 1 (888) 4PTGLAB (1-888-478-4522) (toll free in USA), or 1(312) 455-8498 (outside USA)

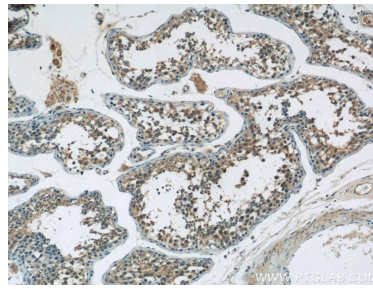
E: proteintech@ptglab.com
W: ptglab.com

This product is exclusively available under Proteintech Group brand and is not available to purchase from any other manufacturer.

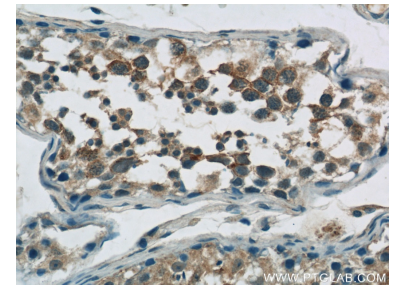
Ausgewählte Validierungsdaten



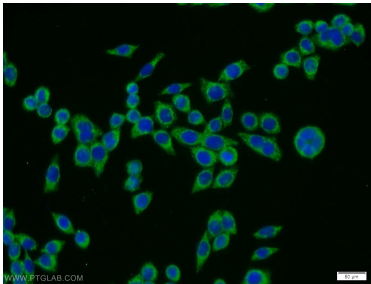
HepG2 cells were subjected to SDS PAGE followed by western blot with 12982-1-AP (TPTE antibody) at dilution of 1:500 incubated at room temperature for 1.5 hours.



Immunohistochemical analysis of paraffin-embedded human testis tissue slide using 12982-1-AP (TPTE Antibody) at dilution of 1:50 (under 10x lens).



Immunohistochemical analysis of paraffin-embedded human testis tissue slide using 12982-1-AP (TPTE Antibody) at dilution of 1:50 (under 40x lens).



Immunofluorescent analysis of BxPC-3 cells using 12982-1-AP (TPTE antibody) at dilution of 1:25 and Alexa Fluor 488-conjugated AffiniPure Goat Anti-Rabbit IgG(H+L).