

Nur für Forschungszwecke

Lamin B1 Polyklonaler Antikörper

Katalog-Nr.:12987-1-AP

812 Publikationen



Allgemeine Informationen

Katalog-Nr.: 12987-1-AP	GenBank-Zugangsnummer: BC012295	Reinigungsmethode: Antigen-Affinitätsreinigung
Größe: 150ul , Konzentration: 450 µg/ml von Nanodrop;	GeneID (NCBI): 4001	Empfohlene Verdünnungen: WB 1:5000-1:50000
Wirt: Kaninchen	Vollständiger Name: lamin B1	IP 0.5-4.0 ug für IP und 1:500-1:2000 für WB
Isotyp: IgG	Berechnete Masse: 66 kDa	IHC 1:50-1:500
Immunogen Katalognummer: AG3631	Beobachtete Masse: 66-70 kDa	IF 1:200-1:800

Anwendungen

Geprüfte Anwendungen:
FC, IF, IHC, IP, WB, ELISA

In Publikationen genannte Anwendungen:
ChIP, FC, IF, IHC, WB

Getestete Reaktivität:
Human, Maus, Ratte

Zitierte Arten:
Hamster, Hausschwein, Huhn, Human, Hund, Maus, Ratte, Bombyx Mori

Hinweis-IHC: Antigenmaskierung mit TE-Puffer pH 9,0 empfohlen. (*) Wahlweise kann die Antigenmaskierung auch mit Citratpuffer pH 6,0 erfolgen.

Positivkontrollen:

WB : HeLa-Zellen, HepG2-Zellen, Jurkat-Zellen, K-562-Zellen, Maus-Augengewebe, Mauslungengewebe, Mausmilzgewebe, Mausnierengewebe, Maus-Pankreasgewebe, MCF-7-Zellen, NIH/3T3-Zellen, RAW 264.7-Zellen, SH-SY5Y-Zellen, U-937-Zellen, Y79-Zellen

IP : HeLa-Zellen,

IHC : humanes Leberkarzinomgewebe, humanes Kolonkarzinomgewebe, humanes Nierengewebe

IF : HepG2-Zellen, humanes Hautkrebsgewebe, NIH/3T3-Zellen

Hintergrundinformationen

Lamins are components of the nuclear lamina, a fibrous layer on the nucleoplasmic side of the inner nuclear membrane, which is thought to provide a framework for the nuclear envelope and may also interact with chromatin. The nuclear lamina consists of a two-dimensional matrix of proteins located next to the inner nuclear membrane. The lamin family of proteins make up the matrix and are highly conserved in evolution. During mitosis, the lamina matrix is reversibly disassembled as the lamin proteins are phosphorylated. Vertebrate lamins consist of two types, A and B. This gene encodes one of the two B type proteins, B1. Expression of uncleavable mutant lamin A or B caused significant delays in the onset of chromatin condensation and nuclear shrinkage during apoptosis (PMID:11953316). This protein is not suitable for samples where the nuclear envelope has been removed.

Bemerkenswerte Veröffentlichungen

Verfasser	Pubmed ID	Journal	Anwendung
Liqun Xu	34638868	Int J Mol Sci	WB
Kaili Liu	33007707	Transl Oncol	WB
Praveen K Dubey	34581943	Mol Cell Biochem	WB

Lagerung

Lagerungsbedingungen:

Bei -20°C lagern. Nach dem Versand ein Jahr lang stabil

Lagerungspuffer:

PBS mit 0.02% Natriumazid und 50% Glycerin pH 7.3.

Aliquotieren ist nicht notwendig bei -20°C Lagerung

*** 20ul-Größen enthalten 0.1% BSA

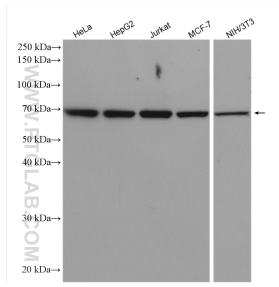
For technical support and original validation data for this product please contact:

T: 1 (888) 4PTGLAB (1-888-478-4522) (toll free in USA), or 1(312) 455-8498 (outside USA)

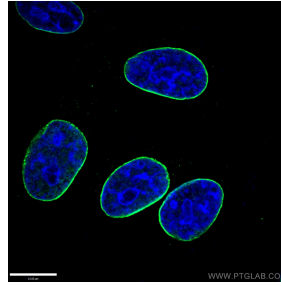
E: proteintech@ptglab.com
W: ptglab.com

This product is exclusively available under Proteintech Group brand and is not available to purchase from any other manufacturer.

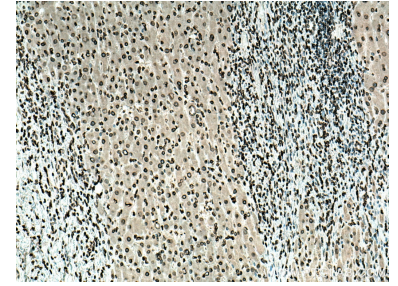
Ausgewählte Validierungsdaten



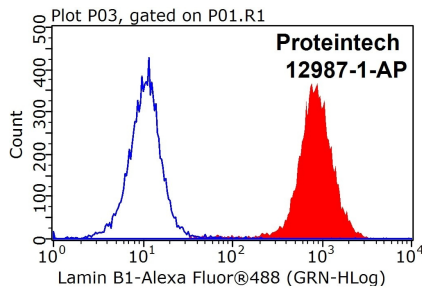
Various lysates were subjected to SDS PAGE followed by western blot with 12987-1-AP (Lamin B1 antibody) at dilution of 1:20000 incubated at room temperature for 1.5 hours.



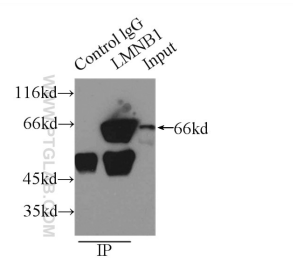
Immunofluorescent analysis of (-20°C Ethanol) fixed HepG2 cells using 12987-1-AP (Lamin B1 antibody) at dilution of 1:200 and Alexa Fluor 488-conjugated AffiniPure Goat Anti-Rabbit IgG(H+L).



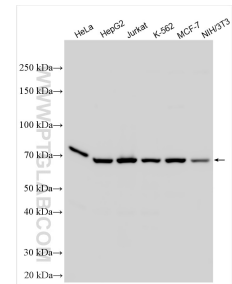
Immunohistochemical analysis of paraffin-embedded human liver cancer tissue slide using 12987-1-AP (Lamin B1 antibody) at dilution of 1:100 (under 10x lens). Heat mediated antigen retrieval with Tris-EDTA buffer (pH 9.0).



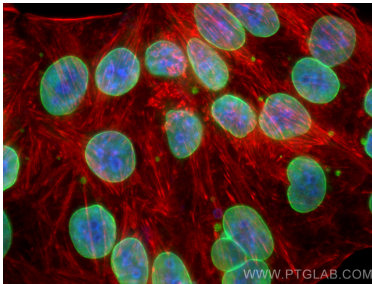
1X10⁶ HEK-293 cells were stained with 0.2ug Lamin B1 antibody (12987-1-AP, red) and control antibody (blue). Fixed with 90% MeOH blocked with 3% BSA (30 min). FITC-Goat anti-Rabbit IgG with dilution 1:100.



IP Result of anti-LMN B1 (IP:12987-1-AP, 3ug; Detection:12987-1-AP 1:1000) with HeLa cells lysate 2500ug.



Various lysates were subjected to SDS PAGE followed by western blot with 12987-1-AP (Lamin B1 antibody) at dilution of 1:20000 incubated at room temperature for 1.5 hours.



Immunofluorescent analysis of (-20°C Ethanol) fixed HepG2 cells using Lamin B1 antibody (12987-1-AP) at dilution of 1:400 and CoraLite@488-Conjugated AffiniPure Goat Anti-Rabbit IgG(H+L), CL594-Phalloidin (red).