

Nur für Forschungszwecke

NF-L Polyklonaler Antikörper

Katalog-Nr.:12998-1-AP

18 Publikationen



Allgemeine Informationen

| | | |
|---|--|--|
| Katalog-Nr.: 12998-1-AP | GenBank-Zugangsnummer: BC039237 | Reinigungsmethode: Antigen-Affinitätsreinigung |
| Größe: 150ul , Konzentration: 600 µg/ml von Nanodrop; | GeneID (NCBI): 4747 | Empfohlene Verdünnungen: WB 1:2000-1:16000 |
| Wirt: Kaninchen | Vollständiger Name: neurofilament, light polypeptide | IP 0.5-4.0 ug für IP und 1:500-1:2000 für WB |
| Isotyp: IgG | Berechnete Masse: 543 aa, 62 kDa | IHC 1:1000-1:4000 |
| Immunogen Katalognummer: AG3667 | Beobachtete Masse: 65-68 kDa, 140-160 kDa | IF 1:200-1:800 |

Anwendungen

| | |
|--|--|
| Geprüfte Anwendungen: FC, IF, IHC, IP, WB, ELISA | Positivkontrollen: WB : SH-SY5Y-Zellen, C6-Zellen, Maushirngewebe, Neuro-2a-Zellen |
| In Publikationen genannte Anwendungen: IF, IHC, IP, WB | IP : Maushirngewebe, |
| Getestete Reaktivität: Human, Maus, Ratte | IHC : Maushirngewebe, |
| Zitierte Arten: Human, Maus, Ratte | IF : SH-SY5Y-Zellen, Maushirngewebe |

Hinweis-IHC: Antigendemaskierung mit TE-Puffer pH 9,0 empfohlen. (*) Wahlweise kann die Antigendemaskierung auch mit Citratpuffer pH 6,0 erfolgen.

Hintergrundinformationen

NEFL, also named as NF68 and NF-L, belongs to the intermediate filament family. Neurofilaments are the 10 nm intermediate filaments found specifically in neurons. They are a major component of the cell's cytoskeleton, and provide support for normal axonal radial growth. Neurofilaments usually contain three intermediate filament proteins: L, M, and H, which are involved in the maintenance of neuronal caliber. The names given to the three major neurofilament subunits are based upon the apparent molecular weight of the mammalian subunits on SDS-PAGE: NF-L, 65-68 kDa; NF-M, 145-160 kDa and NF-H, 200-220 kDa. This antibody is specific to NEFL. It has a very weak reaction to NEFM.

Bemerkenswerte Veröffentlichungen

| Verfasser | Pubmed ID | Journal | Anwendung |
|-----------------|-----------|-------------------------|-----------|
| Xiaoyin Liu | 36246376 | Front Bioeng Biotechnol | IF |
| Brendan P Major | 33117257 | Front Neurol | |
| Fei Yin | 25374587 | Neural Regen Res | WB |

Lagerung

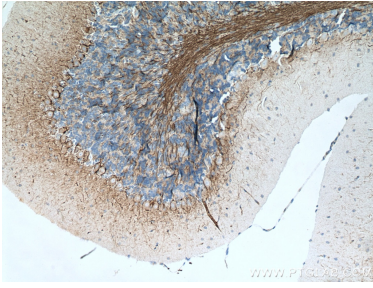
Lagerungsbedingungen:
Bei -20°C lagern. Nach dem Versand ein Jahr lang stabil
Lagerungspuffer:
PBS mit 0.02% Natriumazid und 50% Glycerin pH 7.3.
Aliquotieren ist nicht notwendig bei -20°C Lagerung

*** 20ul-Größen enthalten 0.1% BSA

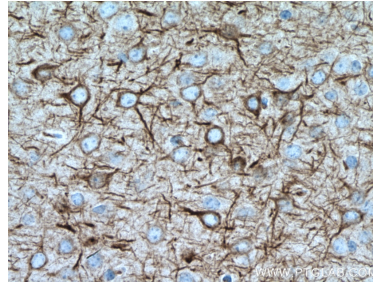
For technical support and original validation data for this product please contact:
T: 1 (888) 4PTGLAB (1-888-478-4522) (toll free in USA), or 1(312) 455-8498 (outside USA)
E: proteintech@ptglab.com
W: ptglab.com

This product is exclusively available under Proteintech Group brand and is not available to purchase from any other manufacturer.

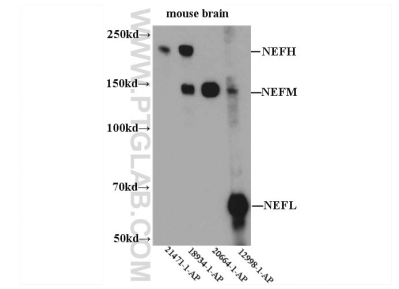
Ausgewählte Validierungsdaten



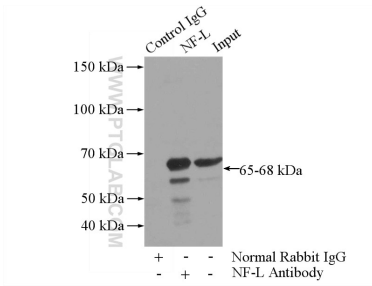
Immunohistochemical analysis of paraffin-embedded mouse brain tissue slide using 12998-1-AP (NF-L antibody) at dilution of 1:2000 (under 10x lens). Heat mediated antigen retrieval with Tris-EDTA buffer (pH 9.0).



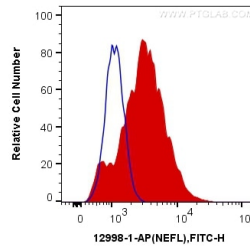
Immunohistochemical analysis of paraffin-embedded mouse brain tissue slide using 12998-1-AP (NF-L antibody) at dilution of 1:2000 (under 40x lens). Heat mediated antigen retrieval with Tris-EDTA buffer (pH 9.0).



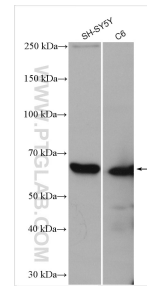
WB result of 12998-1-AP.



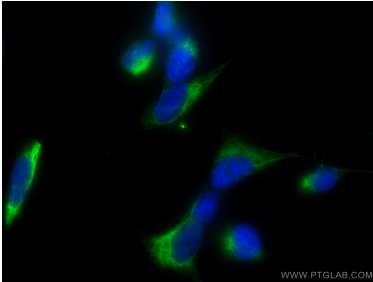
IP Result of anti-NF-L (IP:12998-1-AP, 4ug; Detection:12998-1-AP 1:1000) with mouse brain tissue lysate 4000ug.



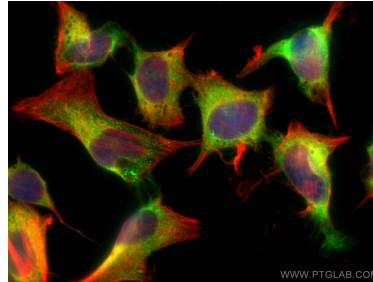
1×10^6 SH-SY5Y cells were intracellularly stained with 0.2 ug Anti-Human NF-L (12998-1-AP) and CoraLite®488-Conjugated AffiniPure Goat Anti-Rabbit IgG(H+L) at dilution 1:1000 (red), or 0.2 ug Control Antibody. Cells were fixed with 4% PFA and permeabilized with 0.1% TritonX-100.



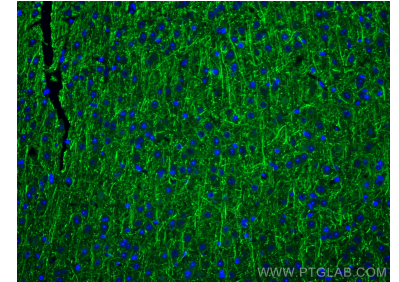
Various lysates were subjected to SDS PAGE followed by western blot with 12998-1-AP (NF-L antibody) at dilution of 1:8000 incubated at room temperature for 1.5 hours.



Immunofluorescent analysis of (-20°C Ethanol) fixed SH-SY5Y cells using NF-L antibody (12998-1-AP) at dilution of 1:400 and CoraLite®488-Conjugated AffiniPure Goat Anti-Rabbit IgG(H+L).



Immunofluorescent analysis of (4% PFA) fixed SH-SY5Y cells using NF-L antibody (12998-1-AP) at dilution of 1:200 and CoraLite®488-Conjugated AffiniPure Goat Anti-Rabbit IgG(H+L), CL594-Phalloidin (red).



Immunofluorescent analysis of (4% PFA) fixed mouse brain tissue using NF-L antibody (12998-1-AP) at dilution of 1:200 and CoraLite®488-Conjugated AffiniPure Goat Anti-Rabbit IgG(H+L).