

Nur für Forschungszwecke

# DOCK7 Polyklonaler Antikörper

Katalog-Nr.: 13000-1-AP

2 Publikationen



## Allgemeine Informationen

|   |  |   |
|---|--|---|
| <b>Katalog-Nr.:</b><br>13000-1-AP                                 | <b>GenBank-Zugangsnummer:</b><br>BC016392                | <b>Reinigungsmethode:</b><br>Antigen-Affinitätsreinigung  |
| <b>Größe:</b><br>150ul, Konzentration: 400 µg/ml von<br>Nanodrop; | <b>GeneID (NCBI):</b><br>85440                           | <b>Empfohlene Verdünnungen:</b><br>WB 1:5000-1:50000<br>IP 0.5-4.0 µg für IP und 1:500-1:1000<br>für WB |
| <b>Wirt:</b><br>Kaninchen   | <b>Vollständiger Name:</b><br>dedicator of cytokinesis 7 | <b>IF 1:50-1:500</b>  |
| <b>Isotyp:</b><br>IgG   | <b>Berechnete Masse:</b><br>2109 aa, 239 kDa             |   |
| <b>Immunogen Katalognummer:</b><br>AG3671                         | <b>Beobachtete Masse:</b><br>238-243 kDa                 |   |

## Anwendungen

|   |   |
|---|---|
| <b>Geprüfte Anwendungen:</b><br>IF, IP, WB, ELISA   | <b>Positivkontrollen:</b>   |
| <b>In Publikationen genannte Anwendungen:</b><br>WB | <b>WB:</b> HEK-293T-Zellen, HeLa-Zellen, HepG2-Zellen,<br>humanes Hirngewebe, Jurkat-Zellen, K-562-Zellen,<br>Maus-Eierstockgewebe, Maushirngewebe,<br>Rattenhirngewebe |
| <b>Getestete Reaktivität:</b><br>Human, Maus, Ratte | <b>IP:</b> HeLa-Zellen,   |
| <b>Zitierte Arten:</b><br>Human, Maus               | <b>IF:</b> HeLa-Zellen,   |

## Hintergrundinformationen

DOCK 7 (dedicator of cytokinesis 7), also known as ZIR2, is a member of the DOCK180-related protein superfamily. Expressed mainly in neuronal cells, DOCK 7 is a guanine nucleotide exchange factor (GEF) for small GTPases, Rac1 and Cdc42, which are the major regulators of actin cytoskeleton. Multiple isoforms of DOCK 7 exist due to alternative splicing events. The DOCK 7 antibody (13000-1-AP) can recognize all the isoforms.

## Bemerkenswerte Veröffentlichungen

| Verfasser | Pubmed ID | Journal       | Anwendung |
|-----------|-----------|---------------|-----------|
| P V Ryder | 23676666  | Mol Biol Cell | WB        |
| Gao Guo   | 35915159  | Nat Cell Biol | WB        |

## Lagerung

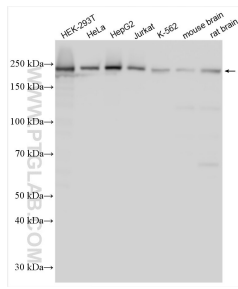
**Lagerungsbedingungen:**  
Bei -20°C lagern. Nach dem Versand ein Jahr lang stabil  
**Lagerungspuffer:**  
PBS mit 0.02% Natriumazid und 50% Glycerin pH 7.3.  
Aliquotieren ist nicht notwendig bei -20°C Lagerung

\*\*\* 20ul-Größen enthalten 0.1% BSA

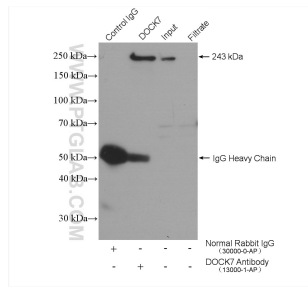
For technical support and original validation data for this product please contact:  
T: 1 (888) 4PTGLAB (1-888-478-4522) (toll free in USA), or 1(312) 455-8498 (outside USA)  
E: proteintech@ptglab.com  
W: ptglab.com

This product is exclusively available under Proteintech Group brand and is not available to purchase from any other manufacturer.

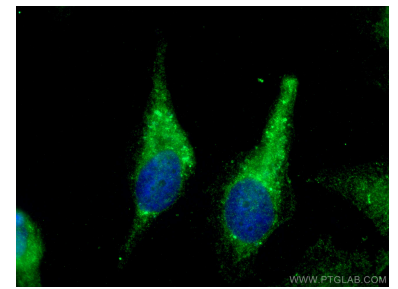
## Ausgewählte Validierungsdaten



Various lysates were subjected to SDS PAGE followed by western blot with 13000-1-AP (DOCK7 antibody) at dilution of 1:12000 incubated at room temperature for 1.5 hours.



IP result of anti-DOCK7 (IP:13000-1-AP, 4ug; Detection:13000-1-AP 1:500) with HeLa cells lysate 2640 ug.



Immunofluorescent analysis of (-20°C Methanol) fixed HeLa cells using DOCK7 antibody (13000-1-AP) at dilution of 1:200 and CoraLite@488-Conjugated AffiniPure Goat Anti-Rabbit IgG(H+L).