

Allgemeine Informationen

Katalog-Nr.: 13008-1-AP	GenBank-Zugangsnummer: BC029496	Reinigungsmethode: Antigen-Affinitätsreinigung
Größe: 150ul , Konzentration: 1000 µg/ml von5802 Nanodrop;	GeneID (NCBI): protein tyrosine phosphatase, receptor type, S	Empfohlene Verdünnungen: WB 1:500-1:1000 IP 0.5-4.0 ug für IP und 1:200-1:1000 für WB IHC 1:50-1:500
Wirt: Kaninchen	Vollständiger Name: protein tyrosine phosphatase, receptor type, S	
Isotyp: IgG	Berechnete Masse: 128aa,14 kDa; 1948aa,217 kDa	
Immunogen Katalognummer: AG3691	Beobachtete Masse: 75-100 kDa	

Anwendungen

Geprüfte Anwendungen: FC, IHC, IP, WB, ELISA	Positivkontrollen: WB : HeLa-Zellen, Maushirngewebe IP : Maushirngewebe, IHC : humanes Nierengewebe,
In Publikationen genannte Anwendungen: IF, IHC, WB	
Getestete Reaktivität: Human, Maus, Ratte	
Zitierte Arten: Human, Maus, Ratte	

Hinweis-IHC: Antigendemaskierung mit TE-Puffer pH 9,0 empfohlen. (*) Wahlweise kann die Antigendemaskierung auch mit Citratpuffer pH 6,0 erfolgen.

Hintergrundinformationen

Type II a receptor protein tyrosine phosphatases (rPTP α) are cell surface receptors important for nervous system development, function, and repair. The expression of rPTP α has previously been reported in b-cells and other target organs for INS although the probes chosen did not permit to distinguish between the splice variants. Proteolytic processing near the transmembrane domain generates an extracellular N-terminal E-domain of 130 kDa and a C-terminal P-domain of approximately 85 kDa of rPTP α , and the short splice variants rPTP α 3 and 4 contain an E-domain of 95 kDa (PMID: 16552719). rPTP α expression was observed in tissue lysates of the adult mouse sensory-motor cortex and thoracic spinal cord (T8-T10) as a 75-80kDa immunoreactive band (PMID: 19780196).

Bemerkenswerte Veröffentlichungen

Verfasser	Pubmed ID	Journal	Anwendung
Andrea M Gomez	25407677	Elife	WB
Jingjing Wu	33151000	J Gene Med	WB
Jun Zhong	30688376	J Cell Biochem	IF, WB

Lagerung

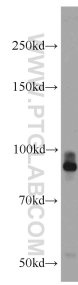
Lagerungsbedingungen:
Bei -20°C lagern. Nach dem Versand ein Jahr lang stabil
Lagerungspuffer:
PBS mit 0.02% Natriumazid und 50% Glycerin pH 7.3.
Aliquotieren ist nicht notwendig bei -20°C Lagerung

***** 20ul-Größen enthalten 0.1% BSA**

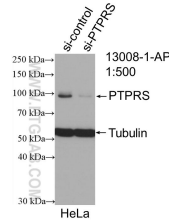
For technical support and original validation data for this product please contact:
T: 1 (888) 4PTGLAB (1-888-478-4522) (toll free in USA), or 1(312) 455-8498 (outside USA)
E: proteintech@ptglab.com
W: ptglab.com

This product is exclusively available under Proteintech Group brand and is not available to purchase from any other manufacturer.

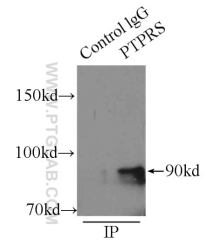
Ausgewählte Validierungsdaten



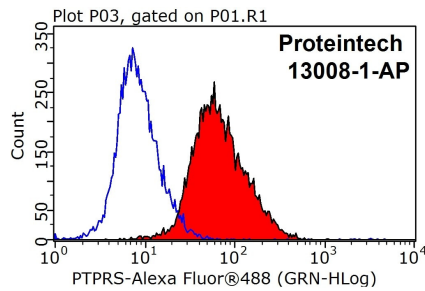
HeLa cells were subjected to SDS PAGE followed by western blot with 13008-1-AP (PTPRS antibody) at dilution of 1:1000 incubated at room temperature for 1.5 hours.



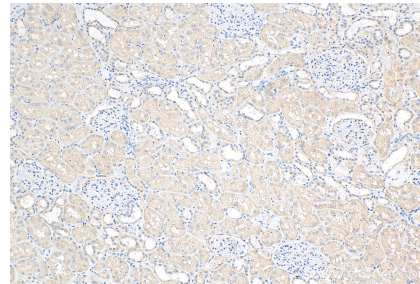
WB result of PTPRS antibody (13008-1-AP; 1:500; incubated at room temperature for 1.5 hours) with sh-Control and sh-PTPRS transfected HeLa cells.



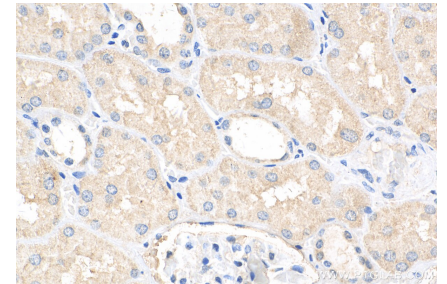
IP Result of anti-PTPRS (IP:13008-1-AP, 5ug; Detection:13008-1-AP 1:400) with mouse brain tissue lysate 6500ug.



1X10⁶ HeLa cells were stained with 0.2ug PTPRS antibody (13008-1-AP, red) and control antibody (blue). Fixed with 90% MeOH blocked with 3% BSA (30 min). Alexa Fluor 488-conjugated AffiniPure Goat Anti-Rabbit IgG(H+L) with dilution 1:1000.



Immunohistochemical analysis of paraffin-embedded human kidney tissue slide using 13008-1-AP (PTPRS antibody) at dilution of 1:200 (under 10x lens). Heat mediated antigen retrieval with Tris-EDTA buffer (pH 9.0).



Immunohistochemical analysis of paraffin-embedded human kidney tissue slide using 13008-1-AP (PTPRS antibody) at dilution of 1:200 (under 40x lens). Heat mediated antigen retrieval with Tris-EDTA buffer (pH 9.0).