

Nur für Forschungszwecke

# Glypican 4 Polyklonaler Antikörper

Katalog-Nr.: 13048-1-AP

Vorgestelltes Produkt

12 Publikationen



## Allgemeine Informationen

<b>Katalog-Nr.:</b> 13048-1-AP	<b>GenBank-Zugangsnummer:</b> BC017166	<b>Reinigungsmethode:</b> Antigen-Affinitätsreinigung
<b>Größe:</b> 150ul, Konzentration: 650 µg/ml von Nanodrop;	<b>GeneID (NCBI):</b> 2239	<b>Empfohlene Verdünnungen:</b> WB 1:500-1:1000
<b>Wirt:</b> Kaninchen	<b>Vollständiger Name:</b> glypican 4	
<b>Isotyp:</b> IgG	<b>Berechnete Masse:</b> 556 aa, 62 kDa	
<b>Immunogen Katalognummer:</b> AG3670	<b>Beobachtete Masse:</b> 62 kDa	

## Anwendungen

<b>Geprüfte Anwendungen:</b> WB, ELISA	<b>Positivkontrollen:</b> WB: A549-Zellen, humanes Hirngewebe, Mausnierengewebe
<b>In Publikationen genannte Anwendungen:</b> IF, IHC, WB	
<b>Getestete Reaktivität:</b> Human, Maus, Ratte	
<b>Zitierte Arten:</b> Human, Maus	

## Hintergrundinformationen

Glypicans (GPCs) are a family of glycosylphosphatidylinositol (GPI)-anchored heparan sulphate proteoglycans (HSPGs) that may play a role in the control of cell division and growth regulation (PMID: 9931407). In mammals, there are six GPCs (GPC1 to GPC6), all of which have a similar core-protein size of approx. 60 kDa and the clustering of glycosaminoglycan attachment site near the C-terminus (PMID: 10585884). They are tethered to the cell surface by GPI linkages, which can be cleaved by endogenous phospholipases, thus releasing the protein. Human GPC4 is a 556-amino acid protein, and shows 93.5% identity to mouse K-glypican. The gene of GPC4 has been mapped to Xq26, and its mRNA is widely expressed in human tissues, including lung, kidney, heart, placenta, skeletal muscle, and pancreas. GPC4 has also been shown to be present in astrocytes, haematopoietic-progenitor and bone-marrow-stromal cells. Studies suggest that GPC4 is involved in the regulation of Wnt signaling and astrocyte GPC4 plays a role in formation of excitatory synapses (PMID: 22302992; 22722203). This antibody can recognize both full length (65 kDa) and cleaved (35 kDa) GPC4 as well as GPC6 (PMID: 18055828; 22722203).

## Bemerkenswerte Veröffentlichungen

Verfasser	Pubmed ID	Journal	Anwendung
Yan Xiong	27425250	Biochem Biophys Res Commun	WB, IF
Isabella Farhy-Tselnicker	34494546	Elife	WB
Yuan Fang	31484922	Nat Commun	IHC, IF

## Lagerung

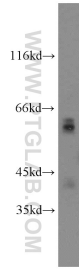
**Lagerungsbedingungen:**  
Bei -20°C lagern. Nach dem Versand ein Jahr lang stabil  
**Lagerungspuffer:**  
PBS mit 0.02% Natriumazid und 50% Glycerin pH 7.3.  
Aliquotieren ist nicht notwendig bei -20°C Lagerung

\*\*\* 20ul-Größen enthalten 0.1% BSA

For technical support and original validation data for this product please contact:  
T: 1 (888) 4PTGLAB (1-888-478-4522) (toll free in USA), or 1(312) 455-8498 (outside USA)  
E: proteintech@ptglab.com  
W: ptglab.com

This product is exclusively available under Proteintech Group brand and is not available to purchase from any other manufacturer.

## Ausgewählte Validierungsdaten



A549 cells were subjected to SDS PAGE followed by western blot with 13048-1-AP (Glypican 4 antibody) at dilution of 1:200 incubated at room temperature for 1.5 hours.