

Nur für Forschungszwecke

Claudin 1 Polyklonaler Antikörper

Katalog-Nr.:13050-1-AP

Vorgestelltes Produkt

179 Publikationen



Allgemeine Informationen

Katalog-Nr.: 13050-1-AP	GenBank-Zugangsnummer: BC012471	Reinigungsmethode: Antigen-Affinitätsreinigung
Größe: 150ul , Konzentration: 600 µg/ml von Nanodrop;	GeneID (NCBI): 9076	Empfohlene Verdünnungen: WB 1:1000-1:8000 IHC 1:50-1:500 IF 1:1000-1:4000
Wirt: Kaninchen	Vollständiger Name: claudin 1	
Isotyp: IgG	Berechnete Masse: 211 aa, 23 kDa	
Immunogen Katalognummer: AG3713	Beobachtete Masse: 20-23 kDa	

Anwendungen

Geprüfte Anwendungen:

IF, IHC, WB, ELISA

In Publikationen genannte Anwendungen:

IF, IHC, WB

Getestete Reaktivität:

Human, Hund, Maus, Ratte

Zitierte Arten:

Hausschwein, Huhn, Human, Hund, Maus, Ratte, Rind

Hinweis-IHC: Antigendemaskierung mit TE-Puffer pH 9,0 empfohlen. (*) Wahlweise kann die Antigendemaskierung auch mit Citratpuffer pH 6,0 erfolgen.

Positivkontrollen:

WB: A431-Zellen, A549-Zellen, HUVEC-Zellen, Maushautgewebe, Mauslebergewebe, Maus-Thymusgewebe, Rattenhautgewebe

IHC: humanes Zervixkarzinomgewebe, humanes malignes Melanomgewebe, humanes Ösophaguskarzinomgewebe, Maushautgewebe

IF: HUVEC-Zellen, MDCK-Zellen

Hintergrundinformationen

Claudins are a family of proteins that are the most important components of the tight junctions, where they establish the paracellular barrier that controls the flow of molecules in the intercellular space between the cells of an epithelium. 23 claudins have been identified. They are small (20-27 kilodalton (kDa)) proteins with very similar structure. They have four transmembrane domains, with the N-terminus and the C-terminus in the cytoplasm. Claudin-1 is expressed primarily in keratinocytes and normal mammary epithelial cells.

Bemerkenswerte Veröffentlichungen

Verfasser	Pubmed ID	Journal	Anwendung
Yuanyuan Li	33003577	Mar Drugs	WB
Zhongwei Xin	30267473	Thorac Cancer	WB
Ruizhi Hu	34977384	Anim Nutr	IHC

Lagerung

Lagerungsbedingungen:

Bei -20°C lagern. Nach dem Versand ein Jahr lang stabil

Lagerungspuffer:

PBS mit 0.02% Natriumazid und 50% Glycerin pH 7.3.

Aliquotieren ist nicht notwendig bei -20°C Lagerung

*** 20ul-Größen enthalten 0.1% BSA

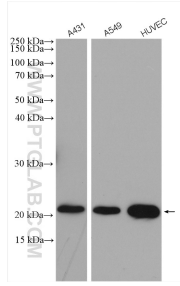
For technical support and original validation data for this product please contact:

T: 1 (888) 4PTGLAB (1-888-478-4522) (toll free in USA), or 1(312) 455-8498 (outside USA)

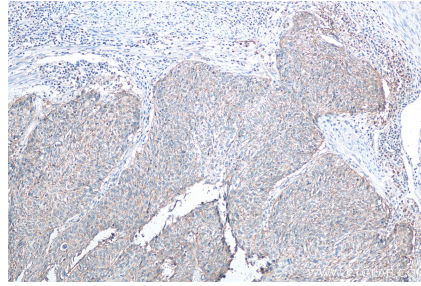
E: proteintech@ptglab.com
W: ptglab.com

This product is exclusively available under Proteintech Group brand and is not available to purchase from any other manufacturer.

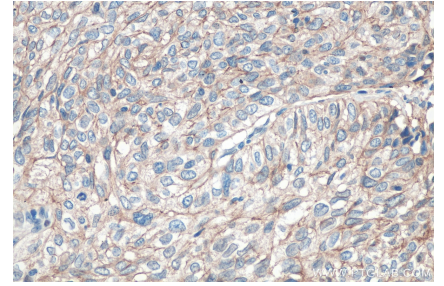
Ausgewählte Validierungsdaten



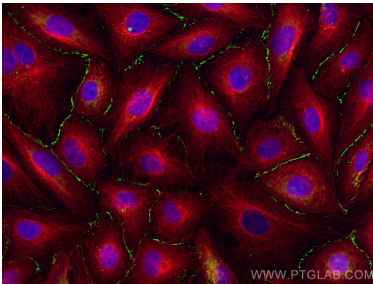
Various lysates were subjected to SDS PAGE followed by western blot with 13050-1-AP (Claudin 1 antibody) at dilution of 1:4000 incubated at room temperature for 1.5 hours.



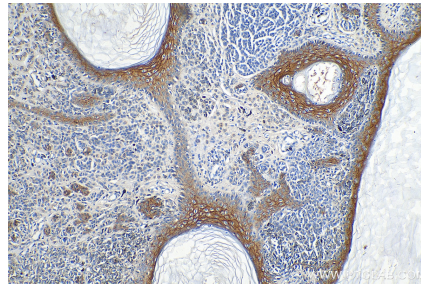
Immunohistochemical analysis of paraffin-embedded human cervical cancer tissue slide using 13050-1-AP (Claudin 1 antibody) at dilution of 1:200 (under 10x lens). Heat mediated antigen retrieval with Tris-EDTA buffer (pH 9.0).



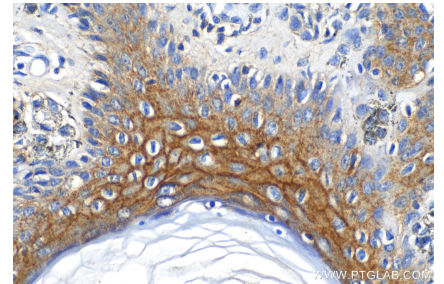
Immunohistochemical analysis of paraffin-embedded human cervical cancer tissue slide using 13050-1-AP (Claudin 1 antibody) at dilution of 1:200 (under 40x lens). Heat mediated antigen retrieval with Tris-EDTA buffer (pH 9.0).



Immunofluorescent analysis of (4% PFA) fixed HUVEC cells using Claudin 1 antibody (13050-1-AP) at dilution of 1:2000 and CoraLite@488-Conjugated AffiniPure Goat Anti-Rabbit IgG(H+L), Alpha Tubulin antibody (66031-1-Ig, Clone: 1E4C11, red).



Immunohistochemical analysis of paraffin-embedded human malignant melanoma tissue slide using 13050-1-AP (Claudin 1 antibody) at dilution of 1:200 (under 10x lens). Heat mediated antigen retrieval with Tris-EDTA buffer (pH 9.0).



Immunohistochemical analysis of paraffin-embedded human malignant melanoma tissue slide using 13050-1-AP (Claudin 1 antibody) at dilution of 1:200 (under 40x lens). Heat mediated antigen retrieval with Tris-EDTA buffer (pH 9.0).