

Nur für Forschungszwecke

G3BP1 Polyklonaler Antikörper

Katalog-Nr.:13057-2-AP

Vorgestelltes Produkt

119 Publikationen



Allgemeine Informationen

Katalog-Nr.: 13057-2-AP	GenBank-Zugangsnummer: BC006997	Reinigungsmethode: Antigen-Affinitätsreinigung
Größe: 150ul , Konzentration: 650 µg/ml von Nanodrop;	GeneID (NCBI): 10146	Empfohlene Verdünnungen: WB 1:2000-1:16000 IP 0.5-4.0 ug für IP und 1:500-1:2000 für WB
Wirt: Kaninchen	Vollständiger Name: GTPase activating protein (SH3 domain) binding protein 1	IHC 1:200-1:800 IF 1:1000-1:4000
Isotyp: IgG	Berechnete Masse: 466 aa, 52 kDa	
Immunogen Katalognummer: AG3728	Beobachtete Masse: 68 kDa	

Anwendungen

Geprüfte Anwendungen:
FC, IF, IHC, IP, WB, ELISA

In Publikationen genannte Anwendungen:
CoIP, IF, IHC, IP, RIP, WB

Getestete Reaktivität:
Human, Maus, Ratte

Zitierte Arten:
Affe, Huhn, Human, Maus, Ratte

Hinweis-IHC: Antigendemaskierung mit TE-Puffer pH 9,0 empfohlen. (*) Wahlweise kann die Antigendemaskierung auch mit Citratpuffer pH 6,0 erfolgen.

Positivkontrollen:

WB : C6-Zellen, HEK-293-Zellen, HeLa-Zellen, HepG2-Zellen, humanes Hirngewebe, Jurkat-Zellen, Maushirngewebe, Mausnierengewebe, MCF-7-Zellen, Neuro-2a-Zellen, Rattenhirngewebe, Rattennierengewebe

IP : HEK-293-Zellen,

IHC : humanes Kolonkarzinomgewebe, humanes Lungenkarzinomgewebe, humanes Mammakarzinomgewebe

IF : sodium arsenite treated HeLa cells,

Hintergrundinformationen

GAP SH3 Binding Protein 1 (G3BP1), also named as G3BP, is an effector of stress granule (SG) assembly. SG biology plays an important role in the pathophysiology of TDP-43 in ALS and FTL-D. G3BP1 can be used as a marker of SG. It has been shown to function downstream of Ras and play a role in RNA metabolism, signal transduction, and proliferation. G3BP1 is a ubiquitously expressed protein that localizes to the cytoplasm in proliferating cells and to the nucleus in non-proliferating cells. G3BP1 has recently been implicated in cancer biology.

Bemerkenswerte Veröffentlichungen

Verfasser	Pubmed ID	Journal	Anwendung
Jumin Park	34551427	Nucleic Acids Res	IF
Bin Dai	34560101	J Biol Chem	IF
Jozsef Gal	31481451	Mol Cell Biol	WB,IF

Lagerung

Lagerungsbedingungen:

Bei -20°C lagern. Nach dem Versand ein Jahr lang stabil

Lagerungspuffer:

PBS mit 0.02% Natriumazid und 50% Glycerin pH 7.3.

Aliquotieren ist nicht notwendig bei -20°C Lagerung

*** 20ul-Größen enthalten 0.1% BSA

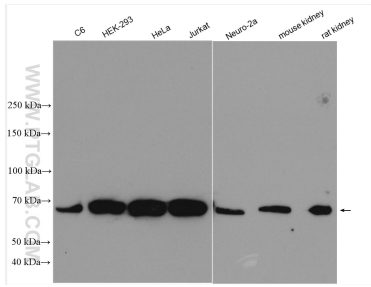
For technical support and original validation data for this product please contact:

T: 1 (888) 4PTGLAB (1-888-478-4522) (toll free in USA), or 1(312) 455-8498 (outside USA)

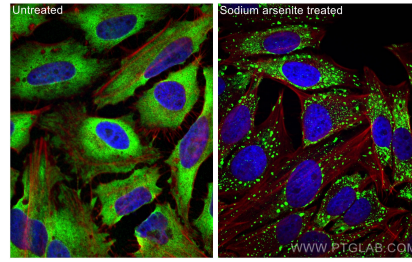
E: proteintech@ptglab.com
W: ptglab.com

This product is exclusively available under Proteintech Group brand and is not available to purchase from any other manufacturer.

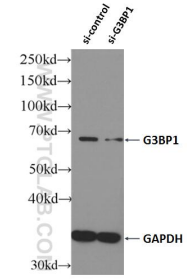
Ausgewählte Validierungsdaten



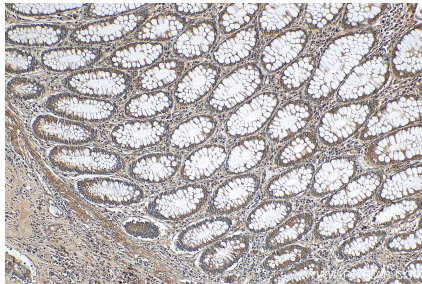
Various lysates were subjected to SDS PAGE followed by western blot with 13057-2-AP (G3BP1 antibody) at dilution of 1:8000 incubated at room temperature for 1.5 hours.



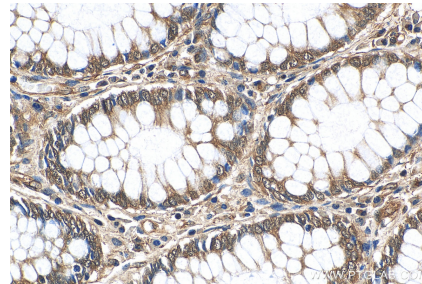
Immunofluorescent analysis of (4% PFA) fixed sodium arsenite treated HeLa cells using G3BP1 antibody (13057-2-AP) at dilution of 1:2000 and CoraLite®488-Conjugated AffiniPure Goat Anti-Rabbit IgG(H+L), CL594-Phalloidin (red).



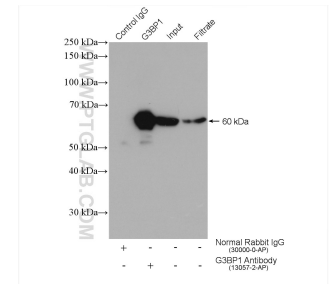
WB result of G3BP1 antibody (13057-2-AP; 1:100000; incubated at room temperature for 1.5 hours) with sh-Control and sh-G3BP1 transfected HEK-293 cells.



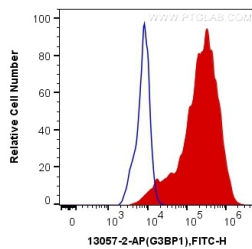
Immunohistochemical analysis of paraffin-embedded human colon cancer tissue slide using 13057-2-AP (G3BP1 antibody) at dilution of 1:400 (under 10x lens). Heat mediated antigen retrieval with Tris-EDTA buffer (pH 9.0).



Immunohistochemical analysis of paraffin-embedded human colon cancer tissue slide using 13057-2-AP (G3BP1 antibody) at dilution of 1:400 (under 40x lens). Heat mediated antigen retrieval with Tris-EDTA buffer (pH 9.0).



IP result of anti-G3BP1 (IP:13057-2-AP, 4ug; Detection:13057-2-AP 1:1000) with HEK-293 cells lysate 1040 ug.



1X10⁶ HeLa cells were intracellularly stained with 0.2 ug Anti-Human G3BP1 (13057-2-AP) and CoraLite®488-Conjugated AffiniPure Goat Anti-Rabbit IgG(H+L) at dilution 1:1000 (red), or 0.2 ug Control Antibody. Cells were fixed with 4% PFA and permeabilized with Flow Cytometry Perm Buffer (PF00011-C).