

Allgemeine Informationen

Katalog-Nr.:

13092-1-AP

Größe:

150ul, Konzentration: 550 µg/ml von Nanodrop;

Wirt:

Kaninchen

Isotyp:

IgG

Immunogen Katalognummer:

AG3679

GenBank-Zugangsnummer:

BC012503

GeneID (NCBI):

4286

Vollständiger Name:

microphthalmia-associated transcription factor

Berechnete Masse:

91 aa, 10 kDa, 59 kDa

Beobachtete Masse:

59-65 kDa

Reinigungsmethode:

Antigen-Affinitätsreinigung

Empfohlene Verdünnungen:
WB 1:500-1:2000
IP 0.5-4.0 µg für IP und 1:500-1:2000 für WB
FC 1:20-1:200

Anwendungen

Geprüfte Anwendungen:

FC, IP, WB, ELISA

In Publikationen genannte Anwendungen:

IF, WB

Getestete Reaktivität:

Human, Maus, Ratte

Zitierte Arten:

Human, Maus, Ratte

Positivkontrollen:

WB : Rattenhautgewebe, Jurkat-Zellen, Mausherzgewebe

IP : Mausherzgewebe,

FC : hESC-Zellen,

Hintergrundinformationen

The retinal pigment epithelium (RPE) has a essential role in maintaining visual function and dedifferentiation of RPE contributes to the pathophysiology of several ocular diseases[PMID: 22523078]. Microphthalmia-associated transcription factor (MITF) is a key regulator of RPE differentiation that is also down-regulated in dedifferentiated hRPE cells. MITF is a basic helix-loop-helix (hHLH)-leucine zipper protein that involves in the development of various cell types, including neural crest-derived melanocytes and optic cup-derived retinal pigment epithelial cells [PMID: 10578055].

Bemerkenswerte Veröffentlichungen

Verfasser	Pubmed ID	Journal	Anwendung
Kaushal Asrani	31527310	J Clin Invest	WB
Bohee Jang	34650007	Mol Cells	WB
Haibin Tian	36185374	iScience	IF

Lagerung

Lagerungsbedingungen:

Bei -20°C lagern. Nach dem Versand ein Jahr lang stabil

Lagerungspuffer:

PBS mit 0.02% Natriumazid und 50% Glycerin pH 7.3.

Aliquotieren ist nicht notwendig bei -20°C Lagerung

*** 20ul-Größen enthalten 0.1% BSA

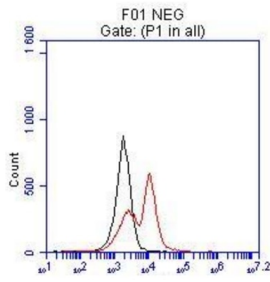
For technical support and original validation data for this product please contact:

T: 1 (888) 4PTGLAB (1-888-478-4522) (toll free in USA), or 1(312) 455-8498 (outside USA)

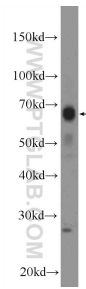
E: proteintech@ptglab.com
W: ptglab.com

This product is exclusively available under Proteintech Group brand and is not available to purchase from any other manufacturer.

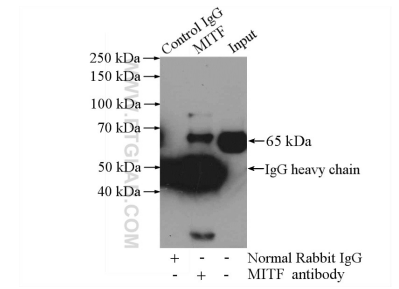
Ausgewählte Validierungsdaten



FC result of anti-MITF (13092-1-AP, 1:50) with hESC which spontaneous differentiation toward retinal lineage (RPE). (Black: control; Red MITF).



rat skin tissue were subjected to SDS PAGE followed by western blot with 13092-1-AP (MITF Antibody) at dilution of 1:1000 incubated at room temperature for 1.5 hours.



IP Result of anti-MITF (IP:13092-1-AP, 4 μ g; Detection:13092-1-AP 1:1000) with mouse heart tissue lysate 4000 μ g.