

Allgemeine Informationen

Katalog-Nr.: 13096-1-AP	GenBank-Zugangsnummer: BC012481	Reinigungsmethode: Antigen-Affinitätsreinigung
Größe: 150ul , Konzentration: 380 µg/ml durch die Bradford-Methode mit BSA als Standard;	GeneID (NCBI): 154	Empfohlene Verdünnungen: WB 1:500-1:2000 IHC 1:50-1:200
Wirt: Kaninchen	Vollständiger Name: adrenergic, beta-2-, receptor, surface	
Isotyp: IgG	Berechnete Masse: 46 kDa	
Immunogen Katalognummer: AG3715	Beobachtete Masse: 50-55 kDa	

Anwendungen

Geprüfte Anwendungen: FC, IHC, WB, ELISA	Positivkontrollen: WB : Mausherzgewebe, Rattenherzgewebe IHC : humanes Herzgewebe,
In Publikationen genannte Anwendungen: IF, IHC, WB	
Getestete Reaktivität: Human, Maus, Ratte	
Zitierte Arten: Human, Maus, Ratte	
Hinweis-IHC: Antigenmaskierung mit TE-Puffer pH 9,0 empfohlen. (*) Wahlweise kann die Antigenmaskierung auch mit Citratpuffer pH 6,0 erfolgen.	

Hintergrundinformationen

Beta-2 adrenergic receptor (ADRB2), a member of the G protein-coupled receptor (GPCR) family, binds epinephrine with an approximately 30-fold greater affinity than it does norepinephrine. ADRB2 is directly linked to one of its final effectors, the class C L-type Ca²⁺ channel, Cav1.2 (PMID: 11441182). This receptor-channel complex also contains a G protein, an adenylyl cyclase, cyclic adenosine monophosphate-dependent protein kinase (PKA), and a counteracting phosphatase, PP2A. Different polymorphic forms, point mutations, and/or downregulation of the gene of ADRB2 are associated with nocturnal asthma, obesity and type 2 diabetes. This antibody detects ADRB2 with an apparent molecular weight of 50-55 kDa as has been shown by some researches (PMID: 25348166; 12502786; 29232706; 23984976; 19584355).

Bemerkenswerte Veröffentlichungen

Verfasser	Pubmed ID	Journal	Anwendung
Wei-Jun Wei	27432558	Oncol Rep	WB
M Ribeiro-da-Silva	30375409	Sci Rep	IF
Filipa Amaro	33120955	Int J Mol Sci	WB,IF

Lagerung

Lagerungsbedingungen:
Bei -20°C lagern. Nach dem Versand ein Jahr lang stabil

Lagerungspuffer:
PBS mit 0.02% Natriumazid und 50% Glycerin pH 7.3.

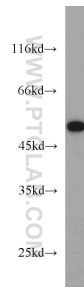
Aliquotieren ist nicht notwendig bei -20°C Lagerung

*** 20ul-Größen enthalten 0.1% BSA

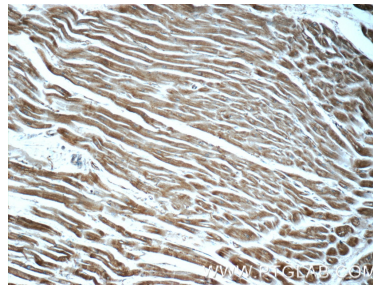
For technical support and original validation data for this product please contact:
 T: 1 (888) 4PTGLAB (1-888-478-4522) (toll free in USA), or 1(312) 455-8498 (outside USA)
 E: proteintech@ptglab.com
 W: ptglab.com

This product is exclusively available under Proteintech Group brand and is not available to purchase from any other manufacturer.

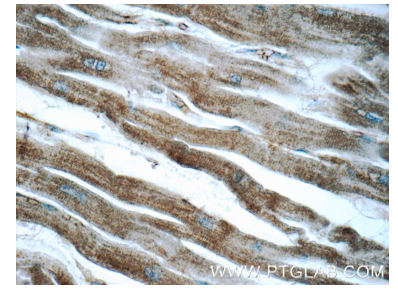
Ausgewählte Validierungsdaten



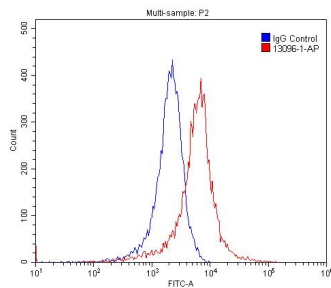
mouse heart tissue were subjected to SDS PAGE followed by western blot with 13096-1-AP (ADRB2 antibody) at dilution of 1:1000 incubated at room temperature for 1.5 hours.



Immunohistochemical analysis of paraffin-embedded human heart tissue slide using 13096-1-AP (ADRB2 Antibody) at dilution of 1:50 (under 10x lens).



Immunohistochemical analysis of paraffin-embedded human heart tissue slide using 13096-1-AP (ADRB2 Antibody) at dilution of 1:50 (under 40x lens).



1X10⁶ PC-3 cells were stained with 0.2ug ADRB2 antibody (13096-1-AP, red) and control antibody (blue). Fixed with 4% PFA blocked with 3% BSA (30 min). Alexa Fluor 488-conjugated AffiniPure Goat Anti-Rabbit IgG(H+L) with dilution 1:1500.