

Nur für Forschungszwecke

PPP2R2B/A/C/D Polyklonaler Antikörper



Katalog-Nr.: 13123-1-AP

2 Publikationen

Allgemeine Informationen

Katalog-Nr.:
13123-1-AP

Größe:
150ul, Konzentration: 200 µg/ml von
Nanodrop und 140 µg/ml durch die
Bradford-Methode mit BSA als
Standard;

Wirt:
Kaninchen

Isotyp:
IgG

Immunogen Katalognummer:
AG3860

GenBank-Zugangsnummer:
BC031790

GeneID (NCBI):
5521

Vollständiger Name:
protein phosphatase 2 (formerly 2A),
regulatory subunit B, beta isoform

Berechnete Masse:
443 aa, 52 kDa

Beobachtete Masse:
52 kDa

Reinigungsmethode:

Antigen-Affinitätsreinigung

Empfohlene Verdünnungen:

WB 1:500-1:1000
IP 0.5-4.0 µg für IP und 1:500-1:1000
für WB
IHC 1:50-1:500
IF 1:10-1:100

Anwendungen

Geprüfte Anwendungen:

IF, IHC, IP, WB, ELISA

In Publikationen genannte Anwendungen:

CoIP, IF, IHC, WB

Getestete Reaktivität:

Human, Maus, Ratte

Zitierte Arten:

Human

Hinweis-IHC: Antigenmaskierung mit TE-Puffer pH 9,0 empfohlen. (*) Wahlweise kann die Antigenmaskierung auch mit Citratpuffer pH 6,0 erfolgen.

Positivkontrollen:

WB: HeLa-Zellen, fetales humanes Hirngewebe, HepG2-Zellen, Maushirngewebe, MCF-7-Zellen, Rattenhirngewebe, SH-SY5Y-Zellen

IP: SH-SY5Y-Zellen,

IHC: Maushirngewebe,

IF: SH-SY5Y-Zellen,

Hintergrundinformationen

The PPP2R2B gene encodes a deduced 443-amino acid protein of approximately 52 kDa, which is a brain-specific regulatory subunit B of protein phosphatase 2. PPP2R2B is a Subunit of PP2A, a highly conserved constitutive enzyme (PMID:11719278). PPP2R2B (Bβ) is an important regulator of protein phosphatase 2A (PP2A) activity in the brain. Through differential promoter usage and alternative splicing, two major isoforms Bβ1 and Bβ2 with divergent sub-cellular targeting N termini are produced. Bβ plays an important role in neuronal survival. It has 5 isoforms produced by alternative splicing. This antibody has cross-reactivity to PPP2R2A, PPP2R2C and PPP2R2D.

Bemerkenswerte Veröffentlichungen

Verfasser	Pubmed ID	Journal	Anwendung
Zheng Li	33407498	Cancer Cell Int	WB, IHC, IF
Mingyu Hu	36250210	Mol Ther Nucleic Acids	WB, CoIP

Lagerung

Lagerungsbedingungen:

Bei -20°C lagern. Nach dem Versand ein Jahr lang stabil

Lagerungspuffer:

PBS mit 0.02% Natriumazid und 50% Glycerin pH 7.3.

Aliquotieren ist nicht notwendig bei -20°C Lagerung

*** 20ul-Größen enthalten 0.1% BSA

For technical support and original validation data for this product please contact:

T: 1 (888) 4PTGLAB (1-888-478-4522) (toll free in USA), or 1(312) 455-8498 (outside USA)

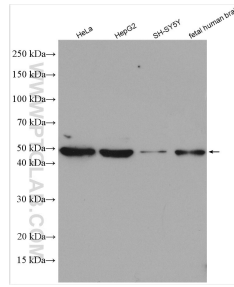
E: proteintech@ptglab.com
W: ptglab.com

This product is exclusively available under Proteintech Group brand and is not available to purchase from any other manufacturer.

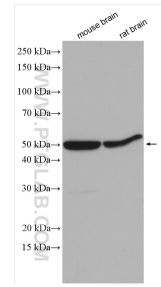
Ausgewählte Validierungsdaten



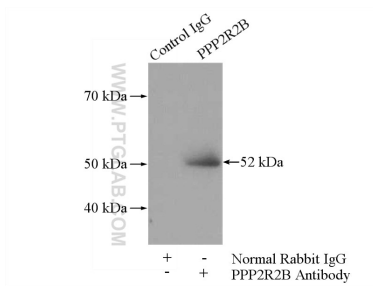
Immunohistochemical analysis of paraffin-embedded mouse brain tissue slide using 13123-1-AP (PPP2R2B/A/C/D antibody) at dilution of 1:200 (under 10x lens). Heat mediated antigen retrieval with Tris-EDTA buffer (pH 9.0).



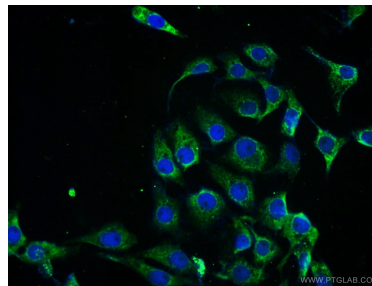
Various lysates were subjected to SDS PAGE followed by western blot with 13123-1-AP (PPP2R2B/A/C/D antibody) at dilution of 1:800 incubated at room temperature for 1.5 hours.



Various lysates were subjected to SDS PAGE followed by western blot with 13123-1-AP (PPP2R2B/A/C/D antibody) at dilution of 1:800 incubated at room temperature for 1.5 hours.



IP Result of anti-PPP2R2B/A/C/D (IP:13123-1-AP, 4ug; Detection:13123-1-AP 1:500) with SH-SY5Y cells lysate 1200ug.



Immunofluorescent analysis of SH-SY5Y cells using 13123-1-AP (PPP2R2B/A/C/D antibody) at dilution of 1:25 and Alexa Fluor 488-conjugated AffiniPure Goat Anti-Rabbit IgG(H+L).