

# CCNL1 Polyklonaler Antikörper

Katalog-Nr.: 13138-1-AP

## Allgemeine Informationen

**Katalog-Nr.:**

13138-1-AP

**Größe:**

150ul, Konzentration: 150 µg/ml von Nanodrop und 133 µg/ml durch die Bradford-Methode mit BSA als Standard;

**Wirt:**

Kaninchen

**Isotyp:**

IgG

**Immunogen Katalognummer:**

AG3731

**GenBank-Zugangsnummer:**

BC007081

**GeneID (NCBI):**

57018

**Vollständiger Name:**

cyclin L1

**Berechnete Masse:**

526 aa, 60 kDa

**Beobachtete Masse:**

46 kDa

**Reinigungsmethode:**

Antigen-Affinitätsreinigung

**Empfohlene Verdünnungen:**

WB 1:500-1:1000

## Anwendungen

**Geprüfte Anwendungen:**

WB, ELISA

**Getestete Reaktivität:**

Human, Maus, Ratte

**Positivkontrollen:**

WB : COLO 320-Zellen, MCF-7-Zellen, PC-3-Zellen

## Hintergrundinformationen

CCNL1, also named as Cyclin-L1, contains a RS region and belongs to the cyclin family. CCNL1 localizes in the nucleus speckle and is Overexpressed in primary tumors of head and neck squamous cell carcinomas (HNSCC). CCNL1 as transcriptional regulator participates in regulating the pre-mRNA splicing process. It seems to be involved in the regulation of RNA polymerase II (pol II). CCNL1 functions in association with cyclin-dependent kinases (CDKs) and has a role in the second step of splicing. It may be a candidate proto-oncogene in head and neck squamous cell carcinomas (HNSCC). The calculated molecular weight of CCNL1 is about 55-60 kDa, but we detected a 40-50 kDa isoform by western blotting.

## Lagerung

**Lagerungsbedingungen:**

Bei -20°C lagern. Nach dem Versand ein Jahr lang stabil

**Lagerungspuffer:**

PBS mit 0.02% Natriumazid und 50% Glycerin pH 7.3.

Aliquotieren ist nicht notwendig bei -20°C Lagerung

**\*\*\* 20ul-Größen enthalten 0.1% BSA**

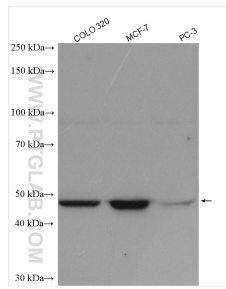
For technical support and original validation data for this product please contact:

T: 1 (888) 4PTGLAB (1-888-478-4522) (toll free in USA), or 1(312) 455-8498 (outside USA)

E: [proteintech@ptglab.com](mailto:proteintech@ptglab.com)  
W: [ptglab.com](http://ptglab.com)

This product is exclusively available under Proteintech Group brand and is not available to purchase from any other manufacturer.

## Ausgewählte Validierungsdaten



Various lysates were subjected to SDS PAGE followed by western blot with 13138-1-AP (CCNL1 antibody) at dilution of 1:800 incubated at room temperature for 1.5 hours.