

Nur für Forschungszwecke

PLS1 Polyklonaler Antikörper

Katalog-Nr.:13143-1-AP



Allgemeine Informationen

Katalog-Nr.: 13143-1-AP	GenBank-Zugangsnummer: BC031083	Reinigungsmethode: Antigen-Affinitätsreinigung
Größe: 150ul , Konzentration: 1000 µg/ml von5357 Nanodrop;	GeneID (NCBI): plastin 1 (I isoform)	Empfohlene Verdünnungen: WB 1:500-1:2000 IHC 1:200-1:800
Wirt: Kaninchen	Berechnete Masse: 629 aa, 70 kDa	
Isotyp: IgG	Beobachtete Masse: 70 kDa	
Immunogen Katalognummer: AG3532		

Anwendungen

Geprüfte Anwendungen:

IHC, WB, ELISA

Getestete Reaktivität:

Human, Maus

Hinweis-IHC: Antigendemaskierung mit TE-Puffer pH 9,0 empfohlen. (*) Wahlweise kann die Antigendemaskierung auch mit Citratpuffer pH 6,0 erfolgen.

Positivkontrollen:

WB : A549-Zellen, Maus-Kolongewebe, Mausnierengewebe

IHC : humanes Nierengewebe,

Hintergrundinformationen

PLS1 also known as Fimbrin, Plastin 1, is an actin-binding protein in the absence of calcium. In the inner ear, PLS1 is required for stereocilia formation. PLS1 Mediates liquid packing of actin filaments that is necessary for stereocilia to grow to their proper dimensions. PLS1 is specifically expressed at high levels in the small intestine, colon, and kidney; relatively expressed at lower levels in the lung and stomach(PMID: 8139549). PLS1 is required for normal hearing in humans and mice. Mutations in PLS1, encoding fimbrin, cause autosomal dominant nonsyndromic hearing loss(NSHL)(PMID: 31397523).

Lagerung

Lagerungsbedingungen:

Bei -20°C lagern. Nach dem Versand ein Jahr lang stabil

Lagerungspuffer:

PBS mit 0.02% Natriumazid und 50% Glycerin pH 7.3.

Aliquotieren ist nicht notwendig bei -20°C Lagerung

*** 20ul-Größen enthalten 0.1% BSA

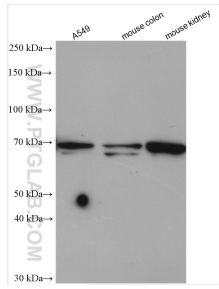
For technical support and original validation data for this product please contact:

T: 1 (888) 4PTGLAB (1-888-478-4522) (toll free in USA), or 1(312) 455-8498 (outside USA)

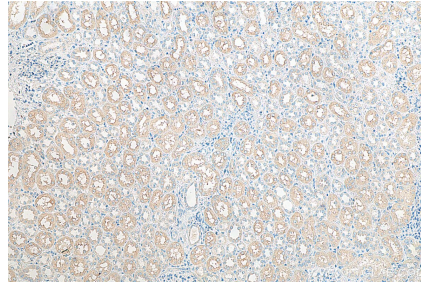
E: proteintech@ptglab.com
W: ptglab.com

This product is exclusively available under Proteintech Group brand and is not available to purchase from any other manufacturer.

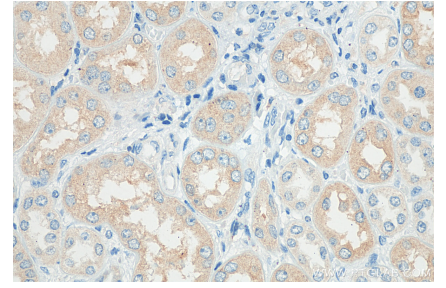
Ausgewählte Validierungsdaten



Various lysates were subjected to SDS PAGE followed by western blot with 13143-1-AP (PLS1 antibody) at dilution of 1:1000 incubated at room temperature for 1.5 hours.



Immunohistochemical analysis of paraffin-embedded human kidney tissue slide using 13143-1-AP (PLS1 antibody) at dilution of 1:400 (under 10x lens). Heat mediated antigen retrieval with Tris-EDTA buffer (pH 9.0).



Immunohistochemical analysis of paraffin-embedded human kidney tissue slide using 13143-1-AP (PLS1 antibody) at dilution of 1:400 (under 40x lens). Heat mediated antigen retrieval with Tris-EDTA buffer (pH 9.0).