

Allgemeine Informationen

Katalog-Nr.:

13171-1-AP

Größe:

150ul , Konzentration: 500 µg/ml von Nanodrop;

Wirt:

Kaninchen

Isotyp:

IgG

Immunogen Katalognummer:

AG3826

GenBank-Zugangsnummer:

BC023006

GeneID (NCBI):

3320

Vollständiger Name:

heat shock protein 90kDa alpha (cytosolic), class A member 1

Berechnete Masse:

853 aa, 90 kDa

Beobachtete Masse:

90 kDa

Reinigungsmethode:

Antigen-Affinitätsreinigung

Empfohlene Verdünnungen:

WB 1:2000-1:16000

IP 0.5-4.0 ug für IP und 1:500-1:1000 für WB

IHC 1:20-1:200

FC 1:10-1:100

Anwendungen

Geprüfte Anwendungen:

FC, IHC, IP, WB, ELISA

In Publikationen genannte Anwendungen:

CoIP, ELISA, IF, IHC, IP, RIP, WB

Getestete Reaktivität:

Human, Maus, Ratte

Zitierte Arten:

Fisch, Hausschwein, Huhn, Human, Maus, Ratte, Rind

Hinweis-IHC: Antigenmaskierung mit TE-Puffer pH 9,0 empfohlen. (*) Wahlweise kann die Antigenmaskierung auch mit Citratpuffer pH 6,0 erfolgen.

Positivkontrollen:

WB : HEK-293-Zellen, C6-Zellen, HeLa-Zellen, Mausnierengewebe, NIH/3T3-Zellen, PC-12-Zellen, Rattennierengewebe

IP : K-562-Zellen, HeLa-Zellen

IHC : humanes Leberkarzinomgewebe,

FC : HeLa-Zellen, A549-Zellen

Hintergrundinformationen

HSP90, encoded by HSP90AA1, is a constitutively and ubiquitously expressed molecular chaperone that is crucial for the stability and function of many proteins. HSP90 provides chaperoning activity for client proteins; many of them are members of oncogenic pathways, indicating its implication in tumor malignancy. HSP90 mainly resides in the cytosol, while it can also be released to the extracellular space. Secreted Hsp90 is a C-terminal truncated form. It has been reported that the level of plasma Hsp90 is positively correlated with tumor malignancy in clinical cancer patients, and can be a promising diagnostic marker for tumor malignancy in clinical application.

Bemerkenswerte Veröffentlichungen

Verfasser	Pubmed ID	Journal	Anwendung
Miao Zhang	36175800	Int J Legal Med	WB
Bing Sun	27684953	PLoS One	WB
Hao Yang	34482643	Proteomics	WB

Lagerung

Lagerungsbedingungen:

Bei -20°C lagern. Nach dem Versand ein Jahr lang stabil

Lagerungspuffer:

PBS mit 0.02% Natriumazid und 50% Glycerin pH 7.3.

Aliquotieren ist nicht notwendig bei -20°C Lagerung

***** 20ul-Größen enthalten 0.1% BSA**

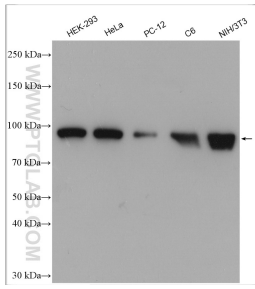
For technical support and original validation data for this product please contact:

T: 1 (888) 4PTGLAB (1-888-478-4522) (toll free in USA), or 1(312) 455-8498 (outside USA)

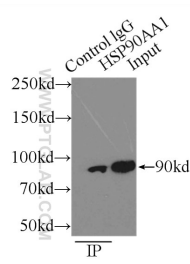
E: proteintech@ptglab.com
 W: ptglab.com

This product is exclusively available under Proteintech Group brand and is not available to purchase from any other manufacturer.

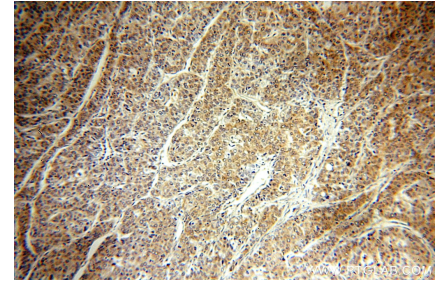
Ausgewählte Validierungsdaten



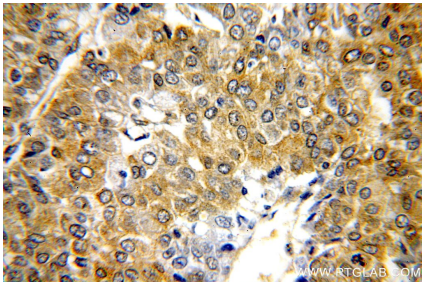
Various lysates were subjected to SDS PAGE followed by western blot with 13171-1-AP (HSP90 antibody) at dilution of 1:8000 incubated at room temperature for 1.5 hours.



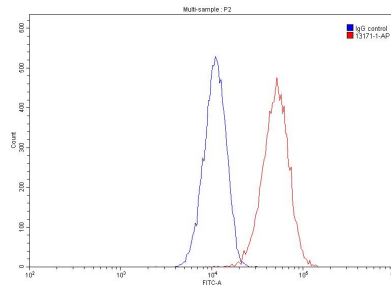
IP Result of anti-HSP90 (IP:13171-1-AP, 3ug; Detection:13171-1-AP 1:500) with K-562 cells lysate 2000ug.



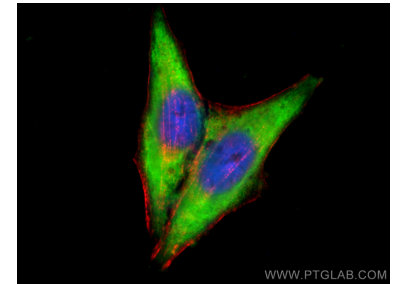
Immunohistochemical analysis of paraffin-embedded human liver cancer using 13171-1-AP (HSP90 antibody) at dilution of 1:50 (under 10x lens).



Immunohistochemical analysis of paraffin-embedded human liver cancer using 13171-1-AP (HSP90 antibody) at dilution of 1:50 (under 40x lens).



1×10^6 HeLa cells were stained with 0.20ug HSP90 antibody (13171-1-AP, red) and control antibody (blue). Fixed with 90% MeOH.



Immunofluorescent analysis of (-20°C Ethanol) fixed HepG2 cells using HSP90 antibody (13171-1-AP) at dilution of 1:400 and CoraLite®488-Conjugated AffiniPure Goat Anti-Rabbit IgG(H+L), CL594-Phalloidin (red).