

Nur für Forschungszwecke

CLEC2D Polyklonaler Antikörper

Katalog-Nr.:13188-1-AP



Allgemeine Informationen

Katalog-Nr.: 13188-1-AP	GenBank-Zugangsnummer: BC019883	Reinigungsmethode: Antigen-Affinitätsreinigung
Größe: 150ul , Konzentration: 260 µg/ml von Nanodrop;	GeneID (NCBI): 29121	Empfohlene Verdünnungen: WB 1:500-1:1000
Wirt: Kaninchen	Vollständiger Name: C-type lectin domain family 2, member D	
Isotyp: IgG	Berechnete Masse: 154 aa, 18 kDa	
Immunogen Katalognummer: AG3862	Beobachtete Masse: 33 kDa	

Anwendungen

Geprüfte Anwendungen: WB, ELISA	Positivkontrollen: WB : Daudi-Zellen, Jurkat-Zellen, U-87 MG-Zellen
Getestete Reaktivität: Human	

Hintergrundinformationen

CLEC2D (C-type lectin domain family 2 member D), also known as LLT1 (lectin-like transcript 1) or OCIL (Osteoclast inhibitory lectin), is a single-pass type II membrane protein expressed by hematopoietic cells and osteoblasts (PMID: 21930700; 14753741). Its expression was found to be tightly correlated with activation on T cells, NK cells, B cells, and DCs (PMID: 21930700). CLEC2D is a ligand for the human NKR-P1A (CD161) receptor and their interaction differentially regulates NK- and T-cell functions (PMID: 16339513, 16339512). It inhibits the formation and function of osteoclasts and modulates the release of interferon-gamma by human NK cells (PMID:14753741; 20415786).

Lagerung

Lagerungsbedingungen:
Bei -20°C lagern. Nach dem Versand ein Jahr lang stabil
Lagerungspuffer:
PBS mit 0.02% Natriumazid und 50% Glycerin pH 7.3.
Aliquotieren ist nicht notwendig bei -20°C Lagerung

***** 20ul-Größen enthalten 0.1% BSA**

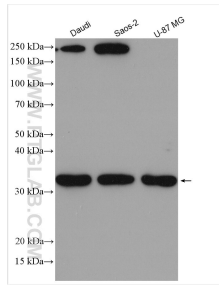
For technical support and original validation data for this product please contact:

T: 1 (888) 4PTGLAB (1-888-478-4522) (toll free
in USA), or 1(312) 455-8498 (outside USA)

E: proteintech@ptglab.com
W: ptglab.com

This product is exclusively available under Proteintech Group brand and is not available to purchase from any other manufacturer.

Ausgewählte Validierungsdaten



Various lysates were subjected to SDS PAGE followed by western blot with 13188-1-AP (CLEC2D antibody) at dilution of 1:500 incubated at room temperature for 1.5 hours.