

Nur für Forschungszwecke

PPM1B Polyklonaler Antikörper

Katalog-Nr.: 13193-1-AP

3 Publikationen



Allgemeine Informationen

Katalog-Nr.: 13193-1-AP	GenBank-Zugangsnummer: BC012002	Reinigungsmethode: Antigen-Affinitätsreinigung
Größe: 150ul, Konzentration: 700 µg/ml von Nanodrop;	GeneID (NCBI): 5495	Empfohlene Verdünnungen: WB 1:1000-1:4000 IHC 1:20-1:200 IF 1:50-1:500
Wirt: Kaninchen	Vollständiger Name: protein phosphatase 1B (formerly 2C), magnesium-dependent, beta isoform	
Isotyp: IgG	Berechnete Masse: 479 aa, 53 kDa	
Immunogen Katalognummer: AG3871	Beobachtete Masse: 36, 53 kDa	

Anwendungen

Geprüfte Anwendungen:

IF, IHC, WB, ELISA

In Publikationen genannte Anwendungen:

Cell treatment, IF, IP

Getestete Reaktivität:

Human, Maus

Zitierte Arten:

Human, Maus

Positivkontrollen:

WB: HeLa-Zellen, MCF-7-Zellen

IHC: humanes Mammakarzinomgewebe, humanes Skelettmuskelgewebe

IF: MCF-7-Zellen,

Hinweis-IHC: Antigenmaskierung mit TE-Puffer pH 9,0 empfohlen. (*) Wahlweise kann die Antigenmaskierung auch mit Citratpuffer pH 6,0 erfolgen.

Hintergrundinformationen

PPM1B is a member of the metal-dependent serine/threonine protein phosphatase (PPM) family with important regulatory functions in cellular signalling pathways (PMID: 18066953). PPM1B is also an important negative regulator of several stress signalling pathways and has been shown to negatively regulate the stress-activated p38 and JNK pathways by directly dephosphorylating upstream signalling proteins (PMID: 9824284). Moreover, PPM1B has also been shown to prevent cell death by negatively regulating necrotic cell death in a RIP3 dephosphorylation-dependent manner (PMID: 25751141). PPM1B can be detected as the WM of 36-55 kDa.

Bemerkenswerte Veröffentlichungen

Verfasser	Pubmed ID	Journal	Anwendung
Xin Li	28361952	Nat Commun	WB, IP
Paula Bollmann	33597873	Front Pharmacol	WB
Katyayane Neopane	36543129	Cell Rep	IF, IP, Cell treatment

Lagerung

Lagerungsbedingungen:

Bei -20°C lagern. Nach dem Versand ein Jahr lang stabil

Lagerungspuffer:

PBS mit 0.02% Natriumazid und 50% Glycerin pH 7.3.

Aliquotieren ist nicht notwendig bei -20°C Lagerung

*** 20ul-Größen enthalten 0.1% BSA

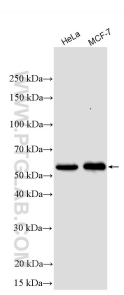
For technical support and original validation data for this product please contact:

T: 1 (888) 4PTGLAB (1-888-478-4522) (toll free in USA), or 1(312) 455-8498 (outside USA)

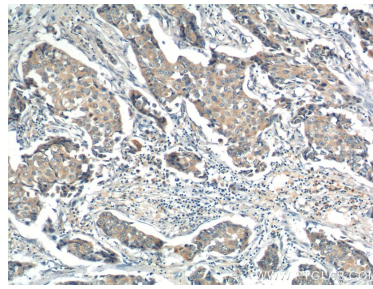
E: proteintech@ptglab.com
W: ptglab.com

This product is exclusively available under Proteintech Group brand and is not available to purchase from any other manufacturer.

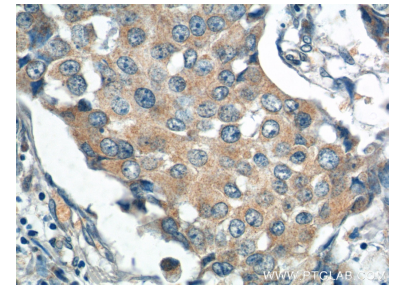
Ausgewählte Validierungsdaten



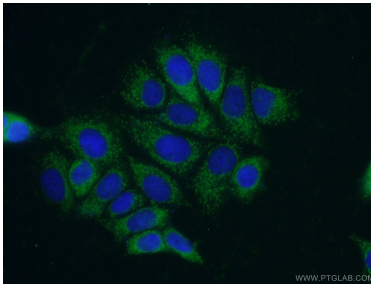
Various lysates were subjected to SDS PAGE followed by western blot with 13193-1-AP (PPM1B antibody) at dilution of 1:2000 incubated at room temperature for 1.5 hours.



Immunohistochemical analysis of paraffin-embedded human breast cancer tissue slide using 13193-1-AP (PPM1B Antibody) at dilution of 1:200 (under 10x lens).



Immunohistochemical analysis of paraffin-embedded human breast cancer tissue slide using 13193-1-AP (PPM1B Antibody) at dilution of 1:200 (under 40x lens).



Immunofluorescent analysis of (-20°C Ethanol) fixed MCF-7 cells using 13193-1-AP (PPM1B antibody) at dilution of 1:50 and Alexa Fluor 488-conjugated AffiniPure Goat Anti-Rabbit IgG(H+L).