

Nur für Forschungszwecke

DCLRE1B Polyklonaler Antikörper

Katalog-Nr.:13203-1-AP



Allgemeine Informationen

Katalog-Nr.:
13203-1-AP

Größe:
150ul , Konzentration: 550 µg/ml von
Nanodrop und 307 µg/ml durch die
Bradford-Methode mit BSA als
Standard;

Wirt:
Kaninchen

Isotyp:
IgG

Immunogen Katalognummer:
AG3945

GenBank-Zugangsnummer:
BC029687

GeneID (NCBI):
64858

Vollständiger Name:
DNA cross-link repair 1B (PSO2
homolog, *S. cerevisiae*)

Berechnete Masse:
532 aa, 60 kDa

Beobachtete Masse:
60 kDa

Reinigungsmethode:

Antigen-Affinitätsreinigung

Empfohlene Verdünnungen:

WB 1:500-1:1000

IF 1:50-1:500

Anwendungen

Geprüfte Anwendungen:

IF, WB, ELISA

Getestete Reaktivität:

Human, Maus, Ratte

Positivkontrollen:

WB : Jurkat-Zellen, HepG2-Zellen

IF : HepG2-Zellen,

Hintergrundinformationen

Interstrand cross-links (ICLs) is an extremely cytotoxic form of DNA damage that covalently tethers the two strands of the double helix, which inhibits fundamental nuclear functions, including transcription and DNA replication [PMID:21701511]. DCLRE1B is one of several evolutionarily conserved genes involved in repair of interstrand cross-links [PMID:10848582]. Furthermore, DCLRE1B was identified as a TRF2-interacting protein and, has a role in telomere maintenance in association with the Shelterin complex, preventing non-homologous end-joining-mediated chromosome fusions protecting leading strand telomeres [PMID:20619712].

Lagerung

Lagerungsbedingungen:

Bei -20°C lagern. Nach dem Versand ein Jahr lang stabil

Lagerungspuffer:

PBS mit 0.02% Natriumazid und 50% Glycerin pH 7.3.

Aliquotieren ist nicht notwendig bei -20°C Lagerung

***** 20ul-Größen enthalten 0.1% BSA**

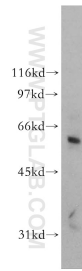
For technical support and original validation data for this product please contact:

T: 1 (888) 4PTGLAB (1-888-478-4522) (toll free
in USA), or 1(312) 455-8498 (outside USA)

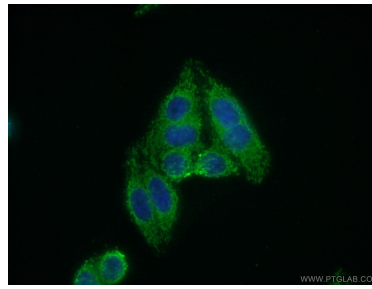
E: proteintech@ptglab.com
W: ptglab.com

This product is exclusively available under Proteintech Group brand and is not available to purchase from any other manufacturer.

Ausgewählte Validierungsdaten



Jurkat cells were subjected to SDS PAGE followed by western blot with 13203-1-AP (DCLRE1B antibody) at dilution of 1:800 incubated at room temperature for 1.5 hours.



Immunofluorescent analysis of (10% Formaldehyde) fixed HepG2 cells using 13203-1-AP (DCLRE1B antibody) at dilution of 1:50 and Alexa Fluor 488-conjugated AffiniPure Goat Anti-Rabbit IgG(H+L).