

Allgemeine Informationen

Katalog-Nr.:
13264-1-AP

Größe:
150ul, Konzentration: 700 µg/ml von
Nanodrop und 400 µg/ml durch die
Bradford-Methode mit BSA als
Standard;

Wirt:
Kaninchen

Isotyp:
IgG

Immunogen Katalognummer:
AG3939

GenBank-Zugangsnummer:
BC025025

GeneID (NCBI):
8836

Vollständiger Name:
gamma-glutamyl hydrolase
(conjugase, foyl/polygammaglutamyl
hydrolase)

Berechnete Masse:
318 aa, 36 kDa

Beobachtete Masse:
30-37 kDa, 55 kDa

Reinigungsmethode:

Antigen-Affinitätsreinigung

Empfohlene Verdünnungen:

WB 1:1000-1:5000

IP 0.5-4.0 µg für IP und 1:500-1:1000
für WB

IHC 1:100-1:500

Anwendungen

Geprüfte Anwendungen:

IHC, IP, WB, ELISA

Getestete Reaktivität:

Human, Maus, Ratte

**Hinweis-IHC: Antigenmaskierung mit TE-
Puffer pH 9,0 empfohlen. (*) Wahlweise
kann die Antigenmaskierung auch mit
Citratpuffer pH 6,0 erfolgen.**

Positivkontrollen:

WB: HL-60-Zellen, HepG2-Zellen, HT-1080.Zellen,
MCF-7-Zellen

IP: HepG2-Zellen,

IHC: humanes Nierengewebe,

Hintergrundinformationen

GGH (Gamma glutamyl hydrolase), also named as GH or Conjugase, is a key lysosomal enzyme involved in the metabolism of folic acid and in the action of antifolate drugs (PMID: 16945597). GGH catalyzes the removal of γ -linked polyglutamates from the intracellular foyl/polyglutamates to yield foyl/monoglutamate coenzymes (PMID: 9614206). The full-length protein has a calculated molecular mass of 36 kDa, contains four potential asparagine glycosylation sites, and was predicted to have a 24-amino-acid signal peptide (PMID: 8816764). GGH can form homodimer which contains two potential active sites (PMID: 16945597). Some bands can be detected by SDS-PAGE: 35-37kDa (full-length), 55kDa (glycosylated form) and 30-33kDa (signal peptide removed) (PMID: 8621474).

Lagerung

Lagerungsbedingungen:

Bei -20°C lagern. Nach dem Versand ein Jahr lang stabil

Lagerungspuffer:

PBS mit 0.02% Natriumazid und 50% Glycerin pH 7.3.

Aliquotieren ist nicht notwendig bei -20°C Lagerung

*** 20ul-Größen enthalten 0.1% BSA

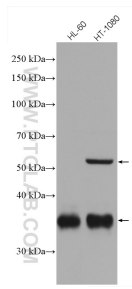
For technical support and original validation data for this product please contact:

T: 1 (888) 4PTGLAB (1-888-478-4522) (toll free
in USA), or 1(312) 455-8498 (outside USA)

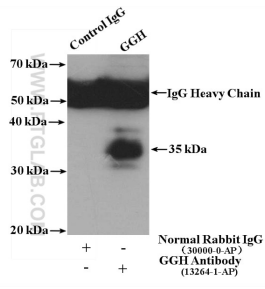
E: proteintech@ptglab.com
W: ptglab.com

This product is exclusively available under Proteintech Group brand and is not available to purchase from any other manufacturer.

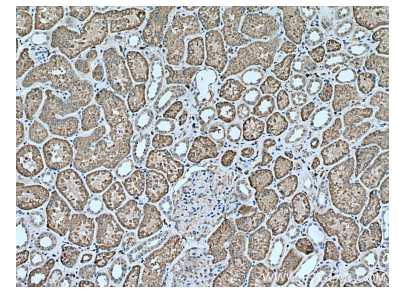
Ausgewählte Validierungsdaten



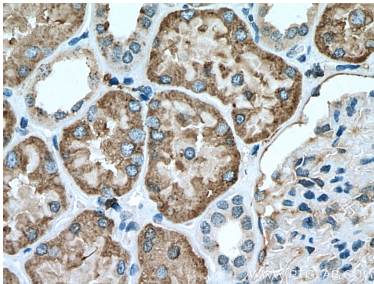
Various lysates were subjected to SDS PAGE followed by western blot with 13264-1-AP (GGH antibody) at dilution of 1:3000 incubated at room temperature for 1.5 hours.



IP result of anti-GGH (IP:13264-1-AP, 4ug; Detection:13264-1-AP 1:500) with HepG2 cells lysate 5600 ug.



Immunohistochemical analysis of paraffin-embedded human kidney tissue slide using 13264-1-AP (GGH antibody) at dilution of 1:200 (under 10x lens). Heat mediated antigen retrieval with Tris-EDTA buffer (pH 9.0).



Immunohistochemical analysis of paraffin-embedded human kidney tissue slide using 13264-1-AP (GGH antibody) at dilution of 1:200 (under 40x lens). Heat mediated antigen retrieval with Tris-EDTA buffer (pH 9.0).