

Nur für Forschungszwecke

KIR3DL1 Polyklonaler Antikörper

Katalog-Nr.:13335-1-AP

1 Publikationen



Allgemeine Informationen

Katalog-Nr.:

13335-1-AP

Größe:

150ul , Konzentration: 350 µg/ml von Nanodrop und 233 µg/ml durch die Bradford-Methode mit BSA als Standard;

Wirt:

Kaninchen

Isotyp:

IgG

Immunogen Katalognummer:

AG4152

GenBank-Zugangsnummer:

BC028206

GeneID (NCBI):

3811

Vollständiger Name:

killer cell immunoglobulin-like receptor, three domains, long cytoplasmic tail, 1

Berechnete Masse:

444 aa, 49 kDa

Beobachtete Masse:

49 kDa

Reinigungsmethode:

Antigen-Affinitätsreinigung

Empfohlene Verdünnungen:

WB 1:500-1:1000

Anwendungen

Geprüfte Anwendungen:

FC, WB,ELISA

Getestete Reaktivität:

Human

Positivkontrollen:

WB : humanes Lebergewebe,

Hintergrundinformationen

Killer cell immunoglobulin-like receptors (KIRs) are transmembrane glycoproteins expressed by natural killer cells and subsets of T cells. The KIR proteins are classified by the number of extracellular immunoglobulin domains (2D or 3D) and by whether they have a long (L) or short (S) cytoplasmic domain. KIR3DL1 is a receptor on natural killer (NK) cells for HLA Bw4 allele. It inhibits the activity of NK cells thus preventing cell lysis. KIR3DL1 and KIR3DS1 are highly homologous. This antibody is raised against 22-344 amino acids of human KIR3DL1 and recognizes both KIR3DL1 (49 kDa) and KIR3DS1 (43 kDa).

Bemerkenswerte Veröffentlichungen

Verfasser	Pubmed ID	Journal	Anwendung
Akihiro Doi	30421793	Clin Exp Immunol	

Lagerung

Lagerungsbedingungen:

Bei -20°C lagern. Nach dem Versand ein Jahr lang stabil

Lagerungspuffer:

PBS mit 0.02% Natriumazid und 50% Glycerin pH 7.3.

Aliquotieren ist nicht notwendig bei -20°C Lagerung

*** 20ul-Größen enthalten 0.1% BSA

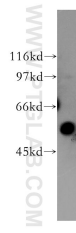
For technical support and original validation data for this product please contact:

T: 1 (888) 4PTGLAB (1-888-478-4522) (toll free in USA), or 1(312) 455-8498 (outside USA)

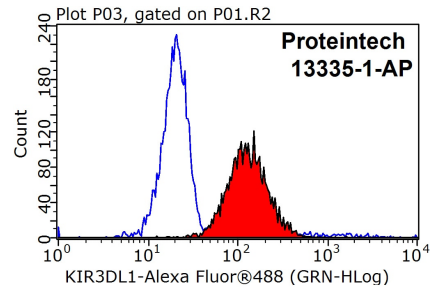
E: proteintech@ptglab.com
W: ptglab.com

This product is exclusively available under Proteintech Group brand and is not available to purchase from any other manufacturer.

Ausgewählte Validierungsdaten



human liver tissue were subjected to SDS PAGE followed by western blot with 13335-1-AP (KIR3DL1 antibody) at dilution of 1:500 incubated at room temperature for 1.5 hours.



1×10^6 Jurkat cells were stained with 0.2ug KIR3DL1 antibody (13335-1-AP, red) and control antibody (blue). Fixed with 90% MeOH blocked with 3% BSA (30 min). Alexa Fluor 488-conjugated AffiniPure Goat Anti-Rabbit IgG(H+L) with dilution 1:1000.