

Allgemeine Informationen

Katalog-Nr.:
13347-2-AP

Größe:
150ul , Konzentration: 800 µg/ml von
Nanodrop und 333 µg/ml durch die
Bradford-Methode mit BSA als
Standard;

Wirt:
Kaninchen

Isotyp:
IgG

Immunogen Katalognummer:
AG4180

GenBank-Zugangsnummer:
BC032374

GeneID (NCBI):
4175

Vollständiger Name:
minichromosome maintenance
complex component 6

Berechnete Masse:
821 aa, 93 kDa

Beobachtete Masse:
105 kDa

Reinigungsmethode:

Antigen-Affinitätsreinigung

Empfohlene Verdünnungen:

WB 1:2000-1:16000

IP 0.5-4.0 µg für IP und 1:500-1:2000
für WB

IHC 1:50-1:500

IF 1:50-1:500

Anwendungen

Geprüfte Anwendungen:

IF, IHC, IP, WB, ELISA

In Publikationen genannte Anwendungen:

IF, IHC, WB

Getestete Reaktivität:

Human, Maus, Ratte

Zitierte Arten:

Human, Maus

**Hinweis-IHC: Antigenmaskierung mit TE-
Puffer pH 9,0 empfohlen. (*) Wahlweise
kann die Antigenmaskierung auch mit
Citratpuffer pH 6,0 erfolgen.**

Positivkontrollen:

WB : COLO 320-Zellen, HeLa-Zellen, Maus-
Eierstockgewebe, Mausmilzgewebe, Maus-
Thymusgewebe

IP : HeLa-Zellen,

IHC : humanes Zervixkarzinomgewebe, humanes
Lungenkarzinomgewebe

IF : HeLa-Zellen,

Hintergrundinformationen

The MCM genes were firstly identified in yeast defective in minichromosome maintenance and have since been shown to have roles in the progression of the cell cycle, and most of them are cell division control genes [PMID: 18096807]. MCM2-7 complex are suggested to be 'DNA licensing factors' which bind to the DNA after mitosis and enable DNA replication before being removed during S phase. Mini-chromosome maintenance 6 (MCM6) is one component of the MCM2-7 complex which is the putative replicative helicase essential for 'once per cell cycle' DNA replication initiation and elongation in eukaryotic cells [PMID: 9305914]. MCM6 single subunit forms homohexamers and contains an ATP-dependent and replication fork stimulated 3' to 5' DNA unwinding activity along with intrinsic DNA-dependent ATPase and ATP-binding activities [PMID:21336027]. The calculated molecular weight of MCM6 is 92 kDa, but the modified MCM6 is about 105 kDa.

Bemerkenswerte Veröffentlichungen

Verfasser	Pubmed ID	Journal	Anwendung
Qing Yuan	25378924	Int J Nanomedicine	WB
Yi-Zhen Liu	29151950	J Cancer	IHC
Minhong Shen	35121987	Nat Cancer	WB

Lagerung

Lagerungsbedingungen:

Bei -20°C lagern. Nach dem Versand ein Jahr lang stabil

Lagerungspuffer:

PBS mit 0.02% Natriumazid und 50% Glycerin pH 7.3.

Aliquotieren ist nicht notwendig bei -20°C Lagerung

***** 20ul-Größen enthalten 0.1% BSA**

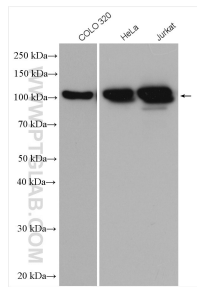
For technical support and original validation data for this product please contact:

T: 1 (888) 4PTGLAB (1-888-478-4522) (toll free
in USA), or 1(312) 455-8498 (outside USA)

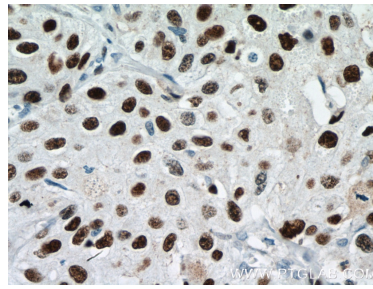
E: proteintech@ptglab.com
W: ptglab.com

**This product is exclusively available under Proteintech
Group brand and is not available to purchase from any
other manufacturer.**

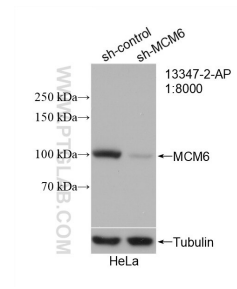
Ausgewählte Validierungsdaten



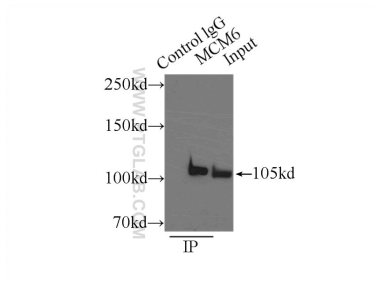
COLO 320 cells were subjected to SDS PAGE followed by western blot with 13347-2-AP (MCM6 antibody) at dilution of 1:8000 incubated at room temperature for 1.5 hours.



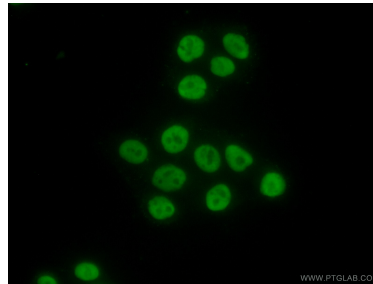
Immunohistochemical analysis of paraffin-embedded human cervical cancer tissue slide using 13347-2-AP (MCM6 antibody) at dilution of 1:200 (under 40x lens. Heat mediated antigen retrieval with Tris-EDTA buffer (pH 9.0)).



WB result of MCM6 antibody (13347-2-AP; 1:8000; incubated at room temperature for 1.5 hours) with sh-Control and sh-MCM6 transfected HeLa cells.



IP Result of anti-MCM6 (IP:13347-2-AP, 3ug; Detection:13347-2-AP 1:1000) with HeLa cells lysate 3800ug.



Immunofluorescent analysis of (10% Formaldehyde) fixed HeLa cells using 13347-2-AP (MCM6 antibody) at dilution of 1:50 and Alexa Fluor 488-conjugated AffiniPure Goat Anti-Rabbit IgG(H+L).