

Nur für Forschungszwecke

IL-16 Polyklonaler Antikörper

Katalog-Nr.:13352-1-AP



Allgemeine Informationen

Katalog-Nr.:
13352-1-AP

Größe:
150ul , Konzentration: 133 µg/ml
durch die Bradford-Methode mit BSA
als Standard;

Wirt:
Kaninchen

Isotyp:
IgG

Immunogen Katalognummer:
AG4044

GenBank-Zugangsnummer:
BC040272

GeneID (NCBI):
3603

Vollständiger Name:
interleukin 16 (lymphocyte
chemoattractant factor)

Berechnete Masse:
130 aa, 15 kDa

Reinigungsmethode:

Antigen-Affinitätsreinigung

Anwendungen

Geprüfte Anwendungen:
IHC,ELISA

Getestete Reaktivität:
Human

Hintergrundinformationen

IL-16 is a pleiotropic cytokine that functions as a chemoattractant, a modulator of T cell activation, and an inhibitor of HIV replication. It is mainly produced by T lymphocytes but also by other immune cells, neuronal cells, fibroblasts and epithelial cells. The signaling process of this cytokine is mediated by CD4. IL-16 induces chemotaxis of CD4+ cells such as lymphocytes, eosinophils, and dendritic cells by ligating CD4 directly at a site distinct from other ligands. Among its multiple functions, IL-16 is a T cell chemoattractant involved in T helper cell inflammatory responses and the regulation of both T cell growth, and responsiveness to regulatory cytokines. The cytokine function is exclusively attributed to the secreted C-terminal peptide, while the N-terminal product may play a role in cell cycle control.

Lagerung

Lagerungsbedingungen:

Bei -20°C lagern. Nach dem Versand ein Jahr lang stabil

Lagerungspuffer:

PBS mit 0.02% Natriumazid und 50% Glycerin pH 7.3.

Aliquotieren ist nicht notwendig bei -20°C Lagerung

*** 20ul-Größen enthalten 0.1% BSA

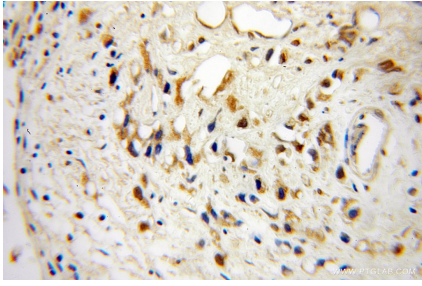
For technical support and original validation data for this product please contact:

T: 1 (888) 4PTGLAB (1-888-478-4522) (toll free
in USA), or 1(312) 455-8498 (outside USA)

E: proteintech@ptglab.com
W: ptglab.com

This product is exclusively available under Proteintech Group brand and is not available to purchase from any other manufacturer.

Ausgewählte Validierungsdaten



Immunohistochemical analysis of paraffin-embedded human prostate cancer using 13352-1-AP (IL-16 antibody) at dilution of 1:100 (under 10x lens).