

## Allgemeine Informationen

<b>Katalog-Nr.:</b> 13387-1-AP	<b>GenBank-Zugangsnummer:</b> BC025717	<b>Reinigungsmethode:</b> Antigen-Affinitätsreinigung
<b>Größe:</b> 150ul, Konzentration: 300 µg/ml von Nanodrop und 213 µg/ml durch die Bradford-Methode mit BSA als Standard;	<b>GeneID (NCBI):</b> 9034	<b>Empfohlene Verdünnungen:</b> WB 1:500-1:2000
<b>Wirt:</b> Kaninchen	<b>Vollständiger Name:</b> chemokine (C-C motif) receptor-like 2	
<b>Isotyp:</b> IgG	<b>Berechnete Masse:</b> 344 aa, 40 kDa	
<b>Immunogen Katalognummer:</b> AG4045	<b>Beobachtete Masse:</b> 47 kDa	

## Anwendungen

<b>Geprüfte Anwendungen:</b> FC, WB, ELISA	<b>Positivkontrollen:</b> WB : A431-Zellen,
<b>In Publikationen genannte Anwendungen:</b> WB	
<b>Getestete Reaktivität:</b> Human	
<b>Zitierte Arten:</b> Ratte	

## Hintergrundinformationen

Chemokine CC motif receptor-like 2 (CCRL2) is a seven-transmembrane domain receptor that shares structural and functional similarities with the family of atypical chemokine receptors (ACKRs) (PMID: 28743719). CCRL2 does not appear to be a signaling receptor, but may have a role in modulating chemokine-triggered immune responses by capturing and internalizing CCL19 or by presenting RARRES2 ligand to CMKLR1, a functional signaling receptors. CCRL2 has been found on almost all hemopoietic cells, including monocytes, macrophages, polymorphonuclear neutrophils (PMNs), T cells, dendritic cells, natural killer cells, and CD34+ progenitor cells, with PMNs expressing the highest levels (PMID: 15188357). CCRL2 is also expressed by barrier cells, such as lymphatic and blood endothelial cells and bronchial and intestinal epithelial cells (PMID: 29056935).

## Bemerkenswerte Veröffentlichungen

Verfasser	Pubmed ID	Journal	Anwendung
Chan Chen	32693388	Aging (Albany NY)	WB
Ayaho Omori	31965243	Pflugers Arch	WB

## Lagerung

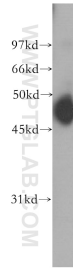
**Lagerungsbedingungen:**  
Bei -20°C lagern. Nach dem Versand ein Jahr lang stabil  
**Lagerungspuffer:**  
PBS mit 0.02% Natriumazid und 50% Glycerin pH 7.3.  
 Aliquotieren ist nicht notwendig bei -20°C Lagerung

\*\*\* 20ul-Größen enthalten 0.1% BSA

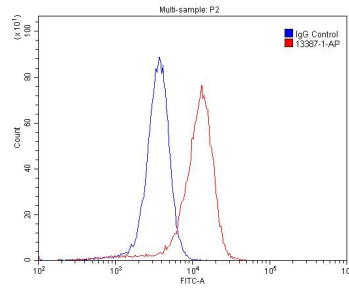
For technical support and original validation data for this product please contact:  
 T: 1 (888) 4PTGLAB (1-888-478-4522) (toll free in USA), or 1(312) 455-8498 (outside USA)  
 E: [proteintech@ptglab.com](mailto:proteintech@ptglab.com)  
 W: [ptglab.com](http://ptglab.com)

This product is exclusively available under Proteintech Group brand and is not available to purchase from any other manufacturer.

## Ausgewählte Validierungsdaten



A431 cells were subjected to SDS PAGE followed by western blot with 13387-1-AP (CCRL2 antibody) at dilution of 1:400 incubated at room temperature for 1.5 hours.



$1 \times 10^6$  A431 cells were stained with .2ug CCRL2 antibody (13387-1-AP, red) and control antibody (blue). Fixed with 4% PFA blocked with 3% BSA (30 min). Alexa Fluor 488-conjugated AffiniPure Goat Anti-Rabbit IgG(H+L) with dilution 1:1500.